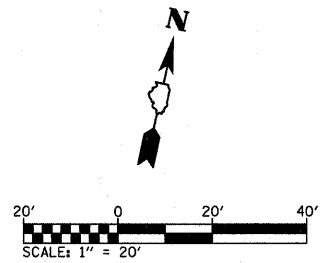
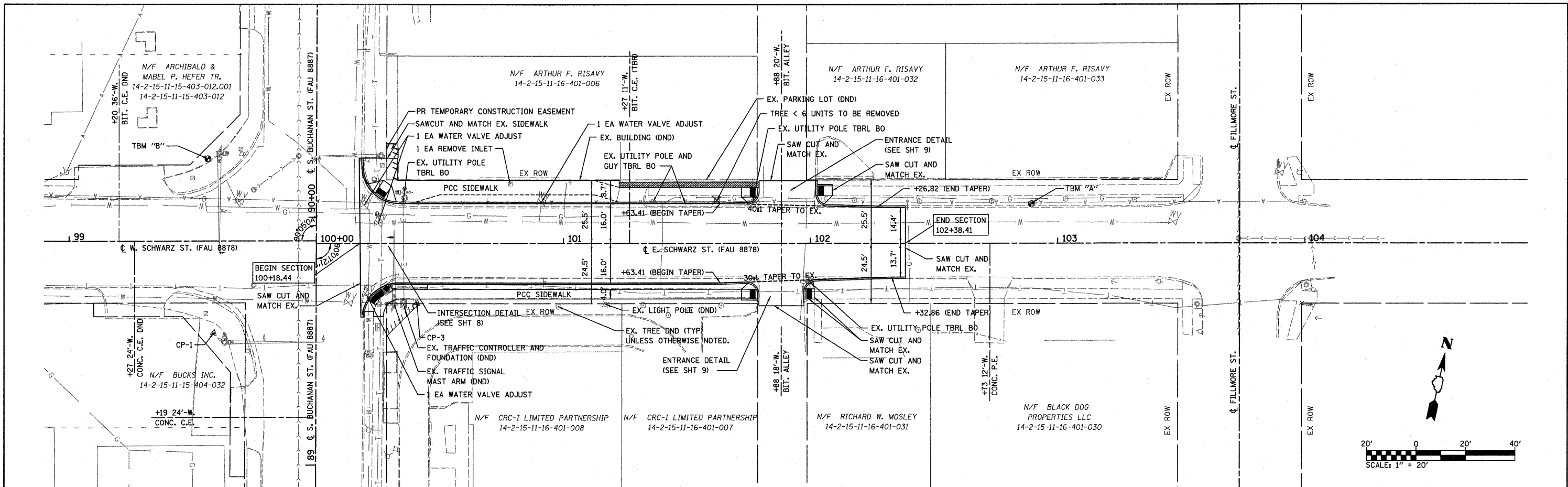
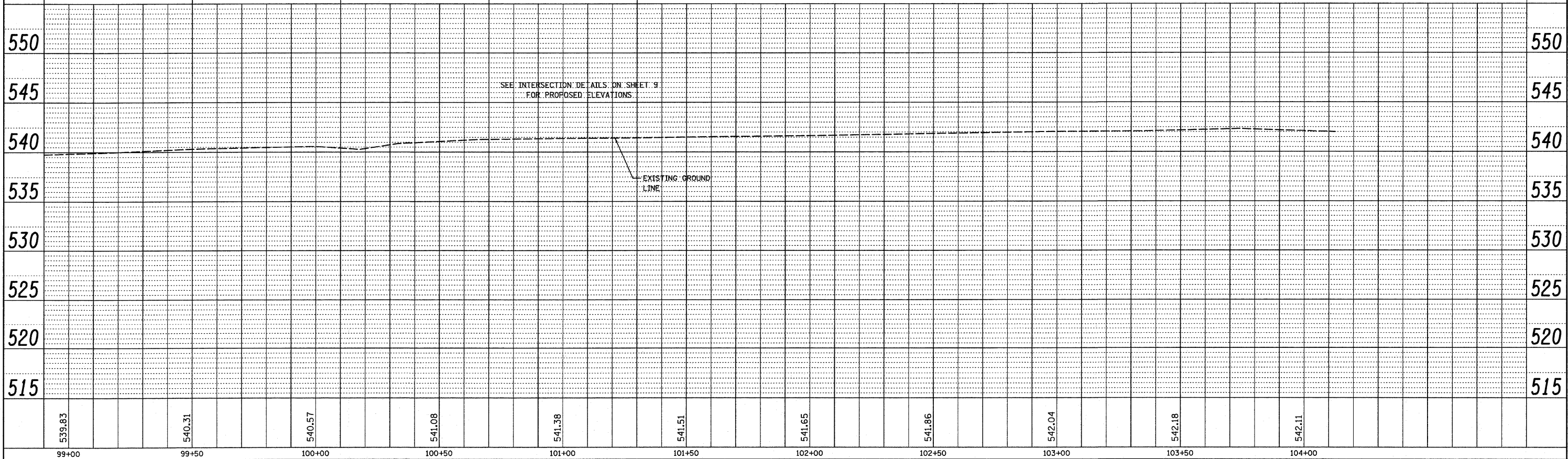


DATE	
BY	
REVIEWED	
PLANNED	
NOTED	
NO.	

DATE	
BY	
REVIEWED	
PLANNED	
NOTED	
NO.	



TBM "A" - R.R. SPIKE IN POWER POLE ON E. SCHWARZ ELEV - 542.94	TBM "B" - CHISELED "X" ON BOLT OF FIRE HYDRANT ELEV - 542.98	CP-1 - P.K. NAIL N 780124.28, E 2357619.29 ELEV - 540.89	CP-2 - P.K. NAIL (NOT SHOWN) N 779547.84, E 2357810.04 ELEV - 542.28
--	--	--	--



FILE NAME = H:\P\26850\Macrostation V8\650pp01.dgn	USER NAME = #USER#	DESIGNED - TLC	REVISED - ---	<b>STATE OF ILLINOIS</b> <b>DEPARTMENT OF TRANSPORTATION</b>	<b>PLAN AND PROFILE</b>	F.A.U. RTE. 8878	SECTION 06-00097-00-PV	COUNTY MADISON	TOTAL SHEETS 16	SHEET NO. 6
PLOT SCALE = 20.0000' / IN.	CHECKED - AJG	REVISOR - ---	REVISOR - ---			E. SCHWARZ ST. INT. IMPROVEMENTS	CONTRACT NO. 97333			
PLOT DATE = 2/25/2008	DATE - 12/20/07	REVISOR - ---	REVISOR - ---			CITY OF EDWARDSVILLE ILLINOIS	FED. AID PROJECT CMM-5011 (228)			
SCALE: 1"=20'		SHEET NO. 1 OF 1 SHEETS				STA. 100+18.44 TO STA. 102+33.41				