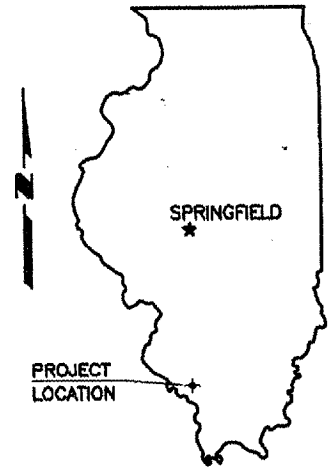


STATE OF ILLINOIS
DEPARTMENT OF TRANSPORTATION
PLANS FOR PROPOSED

HIGHWAY BRIDGE PROGRAM

TOWNSHIP ROUTE 45 (CALVARY CEMETERY ROAD)
BRADLEY TOWNSHIP
SECTION 01-01111-00-BR
PROJECT NO. BROS-077(52)
JOB NO. C-99-503-08
COX CREEK

ROUTE	SECTION	COUNTY	TOTAL SHEETS	SHEET NO.
TR 45	01-01111-00-BR	JACKSON	12	1
PROJECT NO. BROS-077(52)		CONTRACT NO. 99310		



INDEX OF SHEETS

1. COVER SHEET
2. PLAN AND PROFILE
3. EROSION CONTROL PLAN
4. GENERAL PLAN AND ELEVATION
5. DECK BEAMS 21" X 36"
6. DECK BEAMS 21" X 48"
7. ABUTMENTS
8. STEEL RAILING
9. NAME PLATES
10. PILE DETAILS
- 11.-12. CROSS SECTIONS
 - STANDARDS 280001-03 TEMPORARY EROSION CONTROL SYSTEMS
 - 701901 TRAFFIC CONTROL DEVICES
 - BLR-21-7 TRAFFIC CONTROL

SUMMARY OF QUANTITIES

CODE NO.	PAY ITEM	UNIT	TOTAL
20100210	TREE REMOVAL (OVER 15 UNIT DIAMETER)	UNIT	60
20200100	EARTH EXCAVATION	CU YD	1,010
20300100	CHANNEL EXCAVATION	CU YD	64
25000200	SEEDING, CLASS 2	ACRE	0.8
25000400	NITROGEN FERTILIZER NUTRIENTS	POUND	72
25000500	PHOSPHOROUS FERTILIZER NUTRIENTS	POUND	72
25000600	POTASSIUM FERTILIZER NUTRIENTS	POUND	72
25000700	AGRICULTURAL GROUND LIMESTONE	TON	1.6
25100120	MULCH, METHOD 2	TON	0.3
25100630	EROSION CONTROL BLANKET	SQ YD	2,103
28000250	TEMPORARY EROSION CONTROL SEEDING	POUND	80
28000300	TEMPORARY DITCH CHECKS	EACH	15
28000400	PERIMETER EROSION BARRIER	FOOT	615
28000500	INLET AND PIPE PROTECTION	EACH	2
28100807	STONE DUMPED RIPRAP, CLASS A4	TON	140
40200800	AGGREGATE SURFACE COURSE, TYPE B	TON	580
50100100	REMOVAL OF EXISTING STRUCTURES	EACH	1
50105220	PIPE CULVERT REMOVAL	FOOT	70
50200100	STRUCTURE EXCAVATION	CU YD	37
50300225	CONCRETE STRUCTURES	CU YD	18.6
50300280	CONCRETE ENCASEMENT	CU YD	2.1
50400405	PRECAST PRESTRESSED CONCRETE DECK BEAMS (21" DEPTH)	SQ FT	1198
50800105	REINFORCEMENT BARS	POUND	2,440
50900205	STEEL RAILING, TYPE S1	FOOT	100
51201400	FURNISHING STEEL PILES HP10X42	FOOT	208
51202305	DRIVING PILES	FOOT	208
51500100	NAME PLATES	EACH	1
542A0229	PIPE CULVERTS, CLASS A, TYPE 1 24"	FOOT	34
542A1093	PIPE CULVERTS, CLASS A, TYPE 2 48"	FOOT	50
542A048	PIPE CULVERTS, CLASS A, TYPE 2 48" (TEMPORARY)	FOOT	22
* 63000000	STEEL PLATE BEAM GUARD RAIL, TYPE A	FOOT	87.5
* 63100075	TRAFFIC BARRIER TERMINAL, TYPE 5A	EACH	2
* 63100167	TRAFFIC BARRIER TERMINAL TYPE 1, SPECIAL (TANGENT)	EACH	2
67100100	MOBILIZATION	L SUM	1
* 78201000	TERMINAL MARKER - DIRECT APPLIED	EACH	2

* SPECIALTY ITEMS

JOINT UTILITY LOCATION INFORMATION FOR EXCAVATION
J.U.L.I.E. 1-800-892-0123
CONTACT 48 HOURS BEFORE EXCAVATING

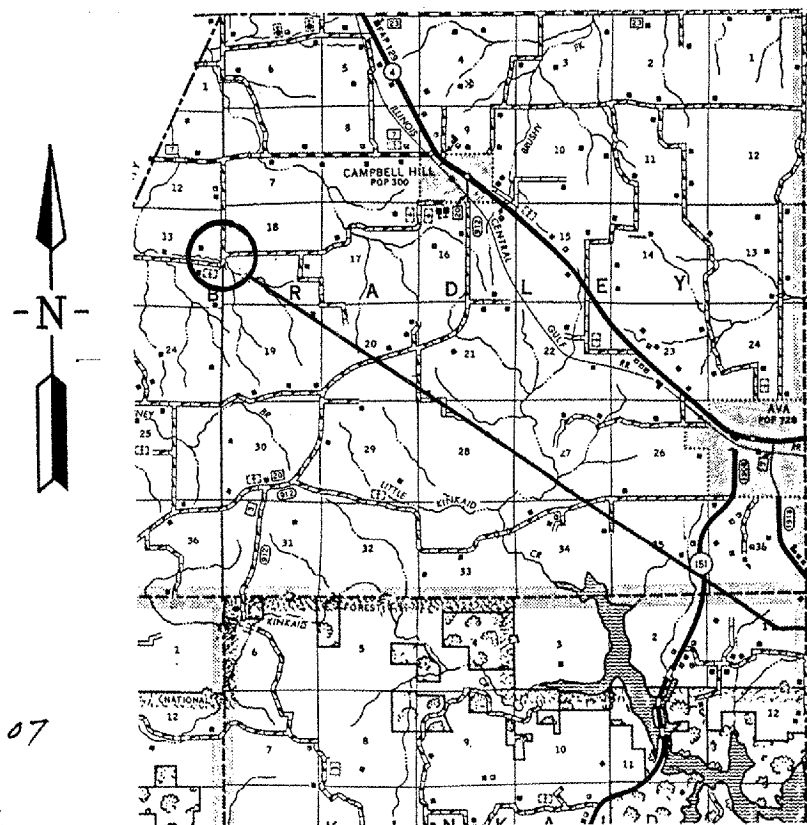
CONTRACT NO. 99310

E. MILLER ENGINEERING, INC.
CONSULTING ENGINEERS
HARRISBURG, ILLINOIS



Edward W. Miller
Edward W. Miller
PROFESSIONAL ENGINEER
#062-025277
EXPIRES NOV. 30, 2007

JACKSON COUNTY

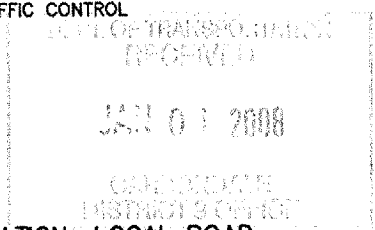


LOCATION MAP

SCALE: 1" = 2 MILES

NET LENGTH OF IMPROVEMENT = 580.00 FT. = 0.1098 MILES

000001-05
515001-02
630301-04
635006-02
BLR 26
BLR 27



CLASSIFICATION : LOCAL ROAD
ADT : 50
DESIGN SPEED : 30 MPH

ILLINOIS DEPARTMENT OF TRANSPORTATION

Approved December 19, 2007
Kyle Rodwald
Highway Commissioner Bradley Township

Approved DECEMBER 19, 2007
John L. ...
Jackson County Engineer

Passed FEBRUARY 13, 2008
Dennis W. Hill
District 9 Engineer of Local Roads and Streets

Releasing for Bid Based on Limited Review
Feb 13, 2008
May ...
Deputy Director of Highways, Region 5 Engineer