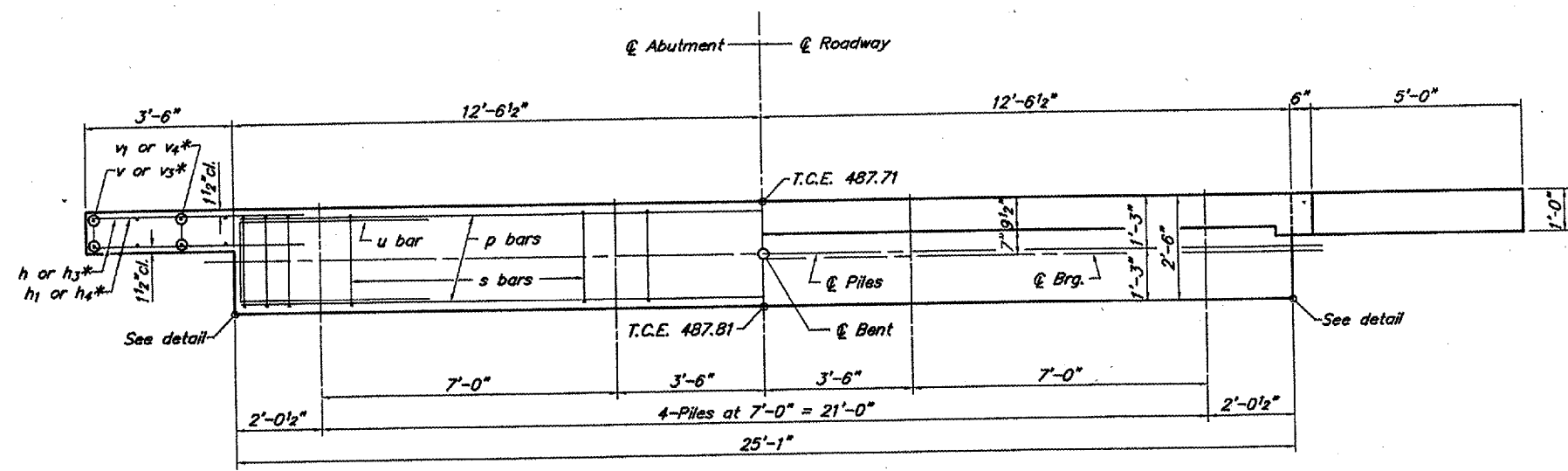
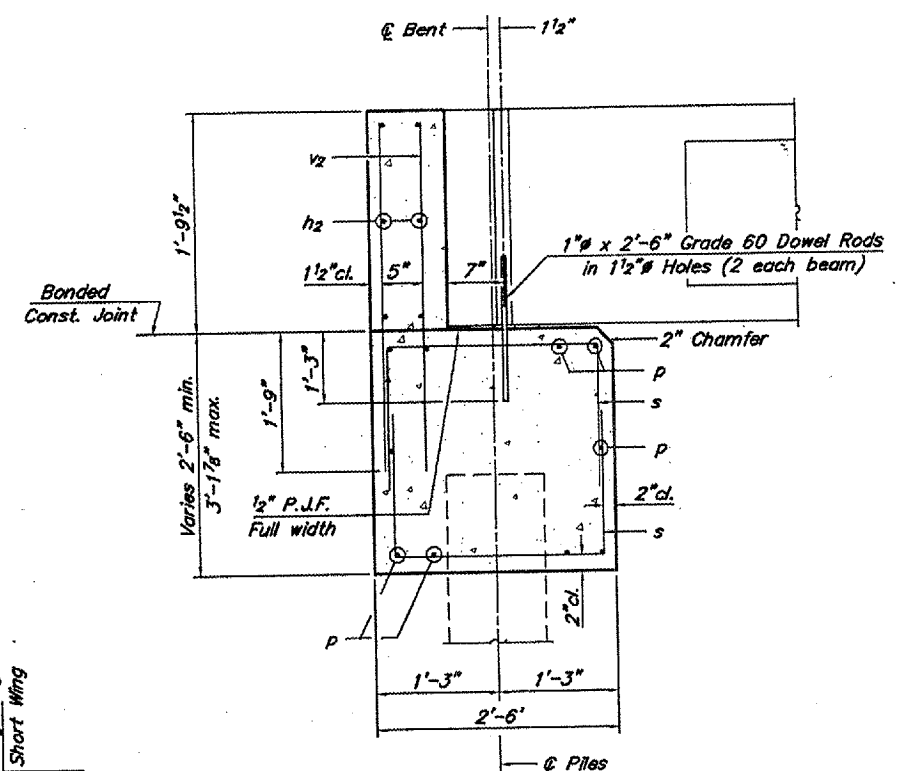


ROUTE	SECTION	COUNTY	TOTAL SHEETS	SHEET NO.
TR 45	01-01111-00-BR	JACKSON	12	7
PROJECT NO. BROS-077(52)			CONTRACT NO. 99310	

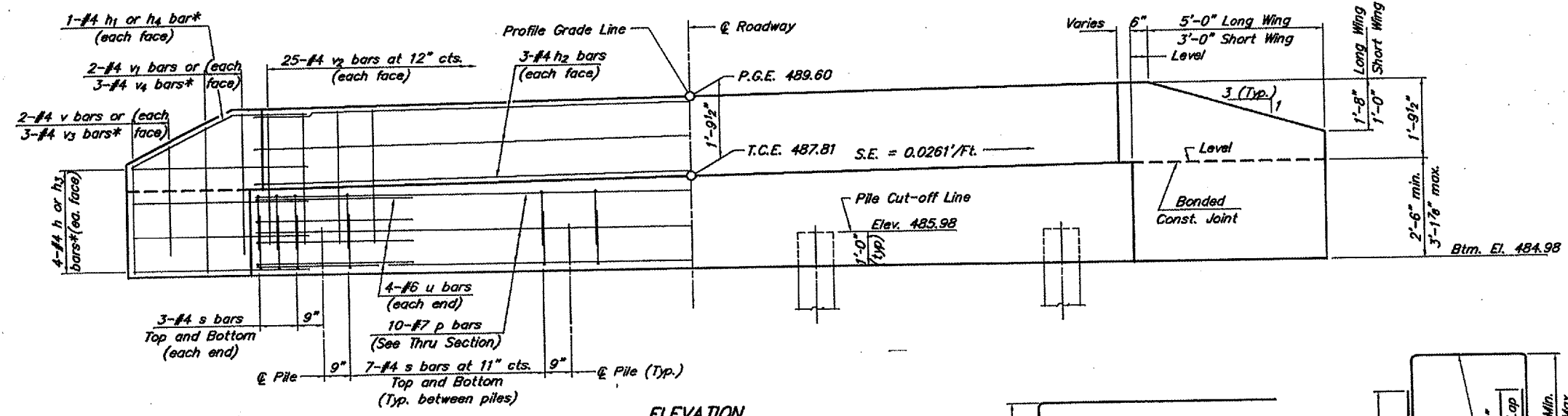


PLAN

* v_1, v_2, h and h_1 bars in short wing
 v_3, v_4, h_3 and h_4 bars in long wing
 (N. Abut. shown. Move backwall and wings across cap for S. Abut.)



SECTION THRU ABUT.
(At Right Angles)



ELEVATION

BILL OF MATERIAL FOR ONE ABUTMENT

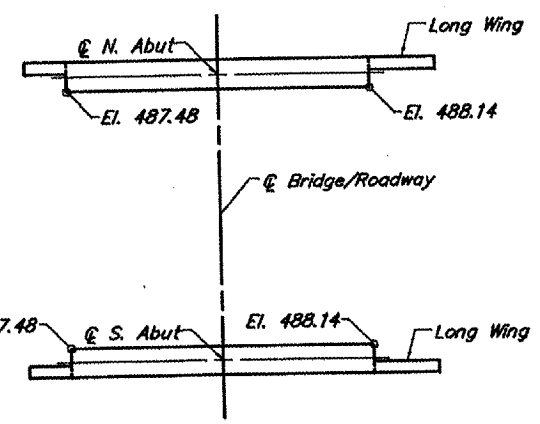
Bar	No.	Size	Length	Shape
h	8	#4	5'-0"	—
h1	2	#4	5'-0"	—
h2	6	#4	24'-9"	—
h3	8	#4	7'-0"	—
h4	2	#4	7'-1"	—
p	10	#7	24'-9"	—
s	54	#4	6'-6"	□
u	8	#6	11'-1"	□
v	4	#4	3'-2"	—
v1	4	#4	3'-11"	—
v2	50	#4	3'-5"	—
v3	6	#4	3'-10"	—
v4	6	#4	4'-7"	—
Concrete Structures			9.3	Cu. Yds.
Reinforcement Bars			1220	Lbs.

NOTES

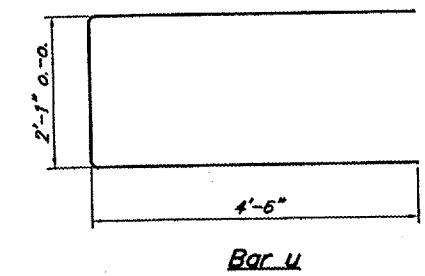
- The Backwall and the portion of the Wingwalls above the bonded construction joint shall be cast against the in-place beam.
- Reinforcement bars shall conform to A.A.S.H.T.O. M-31, M-42 or M-53, Grade 60.

DESIGN STRESSES

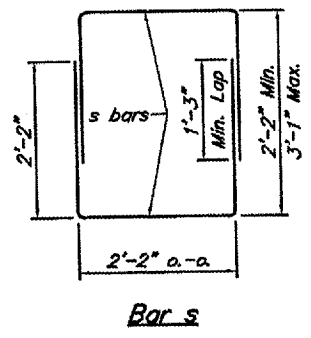
$f_c = 3,500$ psi
 $f_y = 60,000$ psi



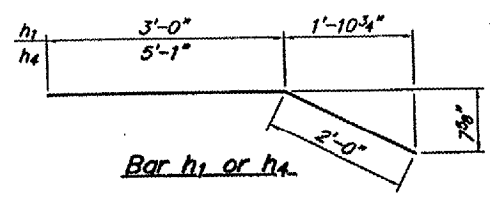
T.C.E. DETAIL



Bar u



Bar s



Bar h1 or h4

ABUTMENTS
 TOWNSHIP ROUTE 45
 COX CREEK
 SECTION 01-01111-00-BR
 JACKSON COUNTY