

1A.

IDOT LETTING DATE: APRIL 25, 2008

ITEM NO. 01A

CONTRACT NO. LK005
TOTAL SHEETS = 120

FOR-BID CONSTRUCTION PLANS

PLANS FOR PROPOSED RELOCATION OF PYOTT ROAD PHASE I, GRADING AND DRAINAGE

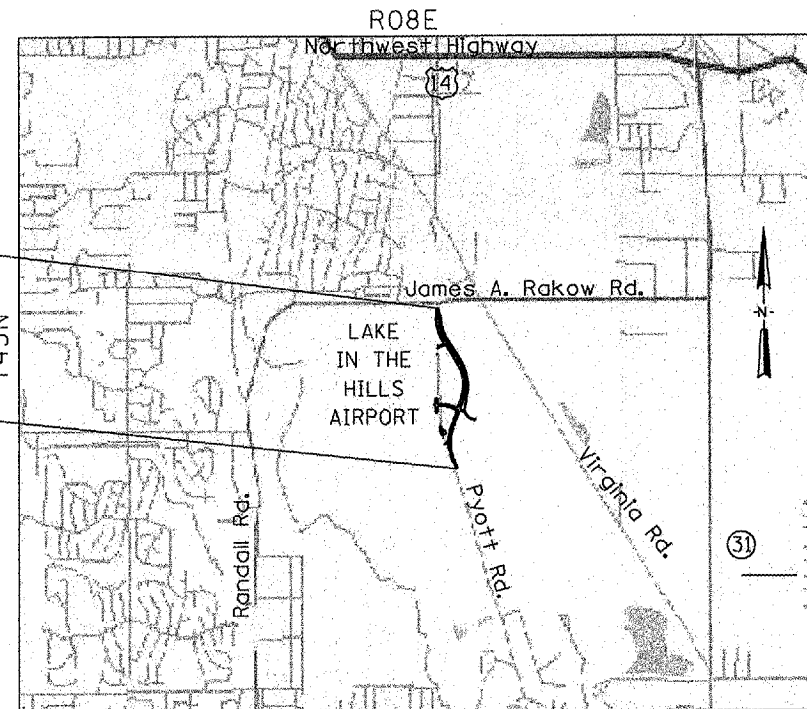
VILLAGE OF LAKE IN THE HILLS MCHENRY COUNTY, ILLINOIS

AIP PROJECT NO. 3-17-0112-B8 IDA PROJECT NO. 3CK-3671



INDEX OF SHEETS

SHEET NO.	DESCRIPTION
1	COVER
2	GENERAL NOTES
3	SUMMARY OF QUANTITIES
4	ALIGNMENT / TIES / BENCHMARKS
5	SITE PLAN
6	EXISTING TYPICAL SECTION - PYOTT ROAD
7-9	PROPOSED TYPICAL SECTIONS - PYOTT ROAD
10-11	PROPOSED TYPICAL SECTIONS - AIRPORT ROAD
12	PROPOSED TYPICAL SECTIONS - ATHANS ENTRANCE AND DRIVEWAYS
13-15	REMOVAL AND TEMPORARY WORK PLANS
16-18	PYOTT ROAD PLAN & PROFILE
19-20	PROPOSED BICYCLE PATH PLAN & PROFILE
21	PROPOSED AIRPORT ROAD AND ATHANS DRIVEWAY ACCESS PLAN & PROFILE
22-23	PYOTT ROAD SUPERELEVATION DETAILS
24	AIRPORT ROAD SUPERELEVATION DETAILS
25	INTERSECTION DETAILS AND ELEVATIONS
26-29	DRAINAGE PLANS
30-31	DRAINAGE DETAILS
32-33	OVERFLOW SPILLWAY DETAILS
34	OUTLET WEIR DETAILS
35	DRAINAGE SCHEDULE
36	SAND FILL PLAN
37-39	GRADING PLANS
40-106	CROSS SECTIONS
107	ELECTRICAL DUCT PLAN
108-111	EROSION CONTROL PLANS
112-113	EROSION CONTROL DETAILS
114-120	BORING LOGS



PYOTT ROAD
END IMPROVEMENT
STA. 47+30

PYOTT ROAD
BEGIN IMPROVEMENT
STA. 10+70

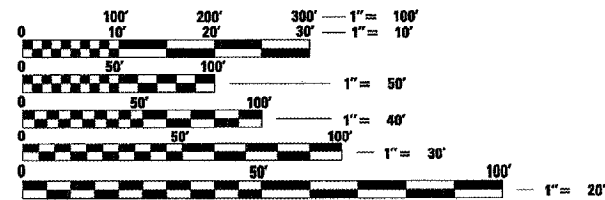
TRAFFIC DATA

PYOTT ROAD: 2005 ADT = 12,100

POSTED SPEED LIMIT:

PYOTT ROAD = 45 MPH
ENTRANCE ROADS = 15 MPH

DESIGN SPEED:
PYOTT ROAD = 50 MPH



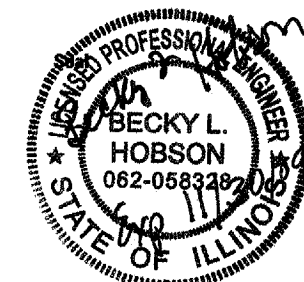
FULL SIZE PLANS HAVE BEEN PREPARED USING STANDARD ENGINEERING SCALES. REDUCED SIZED PLANS WILL NOT CONFORM TO STANDARD SCALES. IN MAKING MEASUREMENTS ON REDUCED PLANS, THE ABOVE SCALES MAY BE USED.

J.U.L.I.E.
JOINT UTILITY LOCATION INFORMATION FOR EXCAVATION
1-800-892-0123
OR 811

ALGONQUIN TOWNSHIP
LOCATION MAP

N. T. S.

GROSS AND NET LENGTH OF PROJECT = 3660 FT



Date of Plans

FEBRUARY 29, 2008

Becky L. Hobson, P.E.

Hanson Professional Services Inc.
Suite 200, 815 Commerce Drive
Oak Brook, Illinois 60523
© Copyright Hanson Professional Services Inc. 2008



Hanson Professional Services Inc.
Suite 200, 815 Commerce Drive
Oak Brook, Illinois 60523
© Copyright Hanson Professional Services Inc. 2008