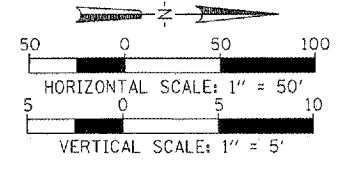
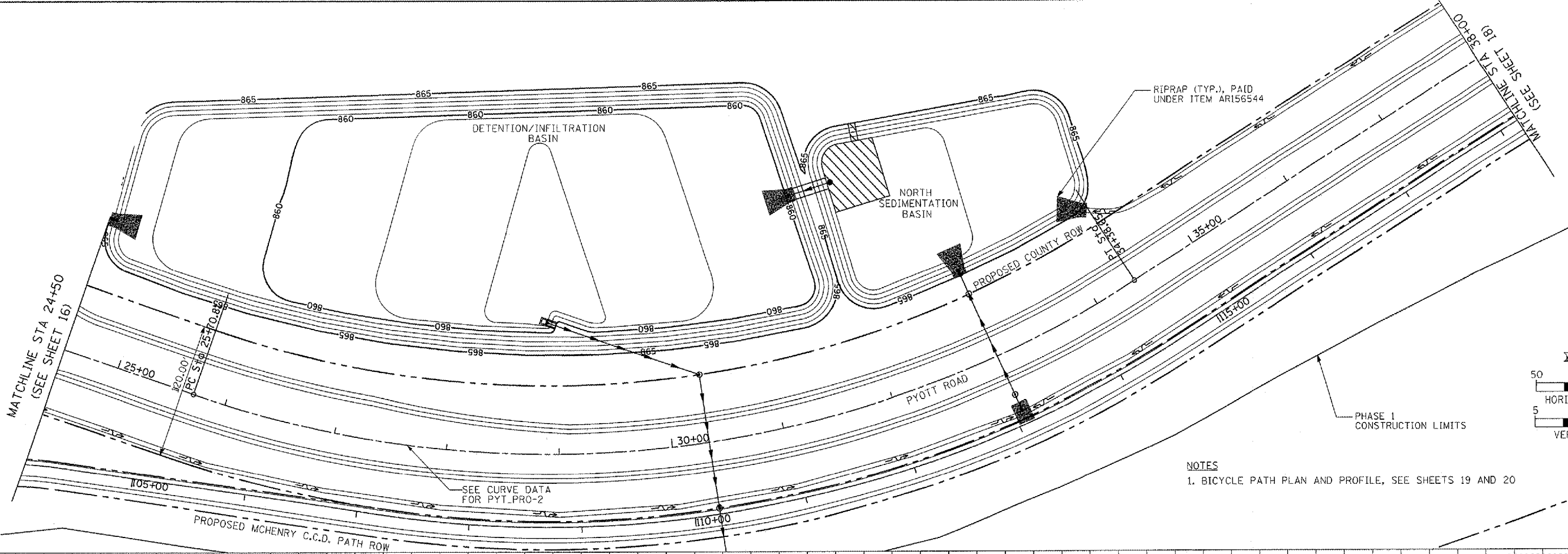


PROP. CURVE PYT_PRO-2
 PI STA. = 30+36.91
 Δ = 51° 47' 44" (LT)
 D = 5° 58' 06"
 R = 960.00'
 T = 466.11'
 L = 867.84'
 E = 107.17'
 e = 4.00%
 T.R. = 60'
 S.E. RUN = 120'
 P.C. STA. = 25+70.81
 P.T. STA. = 34+38.65

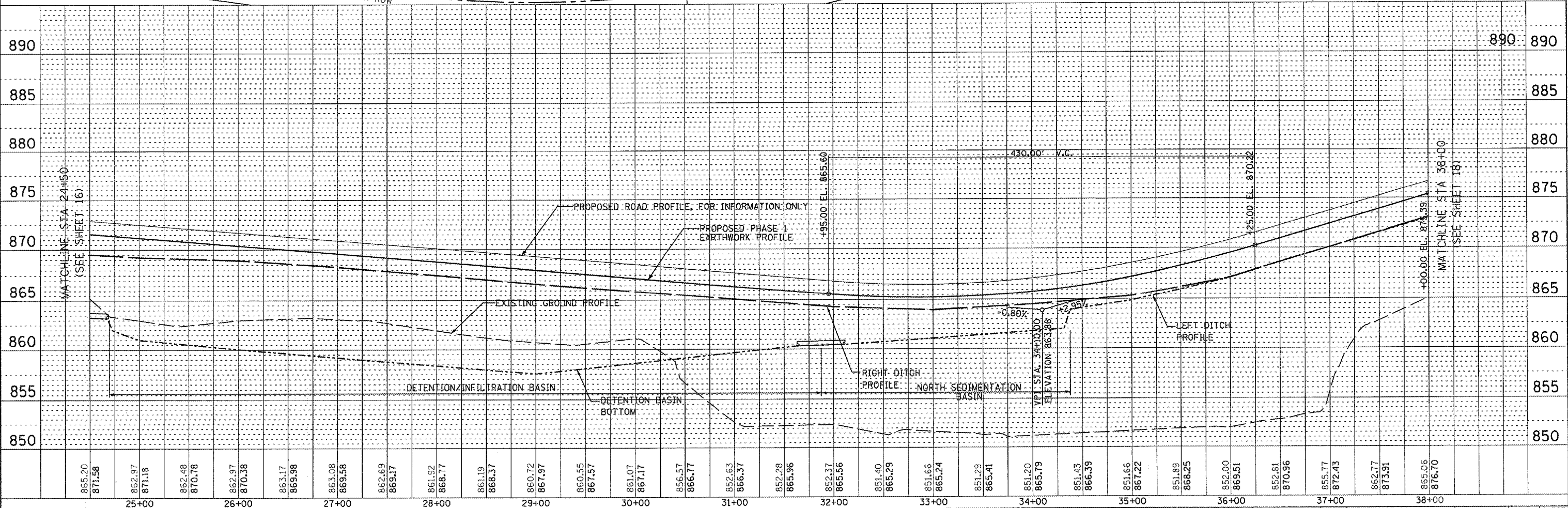


NOTES
 1. BICYCLE PATH PLAN AND PROFILE, SEE SHEETS 19 AND 20

Hanson Professional Services Inc.
 Suite 200, 815 Commerce Drive
 Oak Brook, Illinois 60523
 © Copyright Hanson Professional Services Inc. 2008



PROFILE	DATE
SWERVED	
PLOTTED	
GRADES CHECKED	
NOTE BOOK	
STRUCTURE	
ADJUSTING CURVD	
NO.	



FILE NAME =	USER NAME = MoLau01058	DESIGNED - BLB	REVISED -	COUNTY	TOTAL SHEETS	SHEET NO.
I:\05\Jobs\08041\050802\1\Civil Part A\Sheet\VC-7PP-PR2.sht		DRAWN - BLB	REVISED -	MCHENRY	120	17
PLOT SCALE = 100.0000 / IN.	CHECKED - SJM	REVISED -				
PLOT DATE = 02/28/2009 06:03 AM	DATE - 02/29/08	REVISED -				

VILLAGE OF LAKE IN THE HILLS, ILLINOIS

PYOTT ROAD PLAN AND PROFILE

SCALE: 1"=50' STA. 24+50 TO STA. 38+00 FEDERAL AIP NO. 3-17-0112-88 ILLINOIS IDA NO. 30K-367L