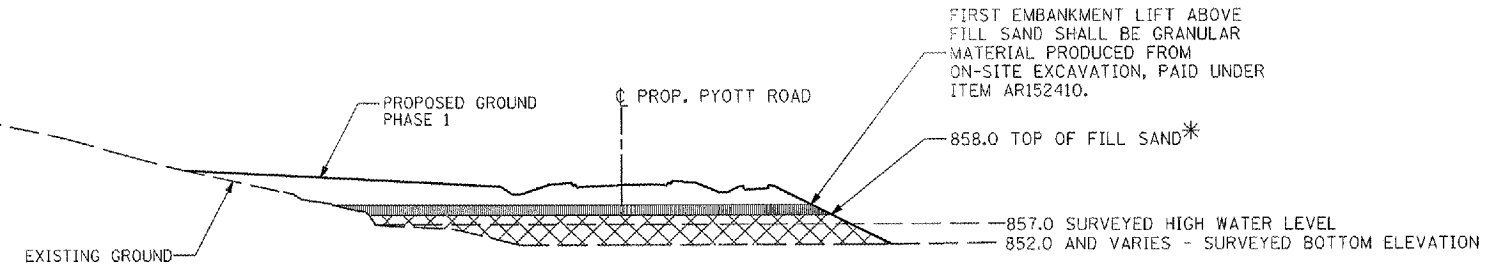
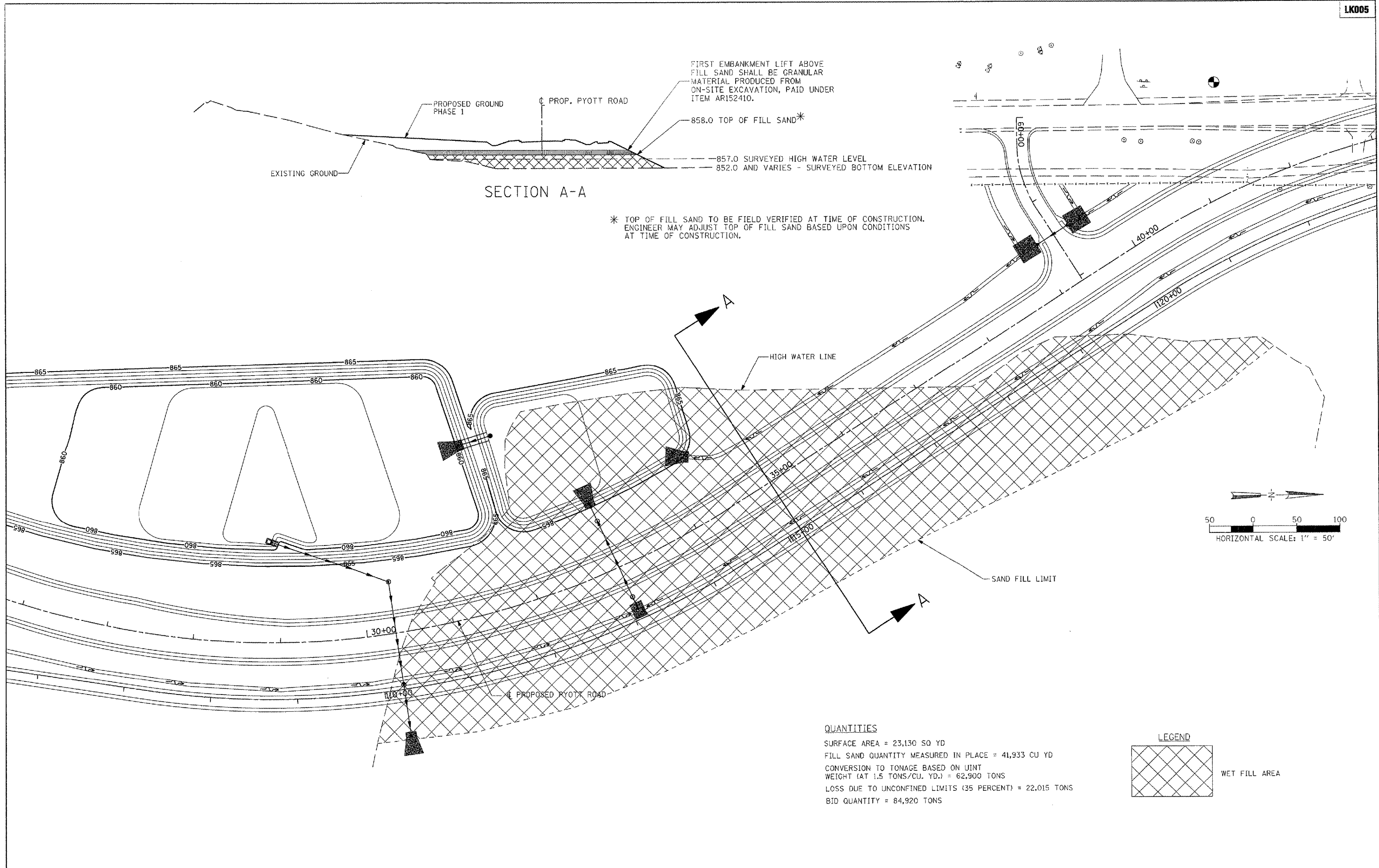
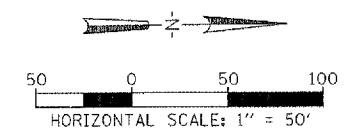


Hanson Professional Services Inc.
 Suite 200, 815 Commerce Drive
 Oak Brook, Illinois 60523
 © Copyright Hanson Professional Services Inc. 2008



SECTION A-A

* TOP OF FILL SAND TO BE FIELD VERIFIED AT TIME OF CONSTRUCTION.
 ENGINEER MAY ADJUST TOP OF FILL SAND BASED UPON CONDITIONS
 AT TIME OF CONSTRUCTION.



QUANTITIES

SURFACE AREA = 23,130 SQ YD
 FILL SAND QUANTITY MEASURED IN PLACE = 41,933 CU YD
 CONVERSION TO TONNAGE BASED ON UNIT WEIGHT (AT 1.5 TONS/CU. YD.) = 62,900 TONS
 LOSS DUE TO UNCONFINED LIMITS (35 PERCENT) = 22,015 TONS
 BID QUANTITY = 84,920 TONS

LEGEND

WET FILL AREA

FILE NAME = I:\05\Jobs\00041\050802\Civil Part A\Sheet\NC-FILLSAND.dwg	USER NAME = Hour0802	DESIGNED - CBP	REVISED -	VILLAGE OF LAKE IN THE HILLS, ILLINOIS	FILL SAND PLACEMENT PLAN AND DETAILS PYOTT ROAD		COUNTY	TOTAL SHEETS	SHEET NO.
	PLOT SCALE = 100.0000' / IN.	DRAWN - CBP	REVISED -		SCALE: 1"=50'		MCHENRY	\$T01	36
	PLOT DATE = 02/29/2008, 10:17 AM	CHECKED - BLB	REVISED -				FEDERAL AIP NO. 3-17-0112-08	ILLINOIS	IDA NO. 3CK-3671
		DATE - 02/29/08	REVISED -						