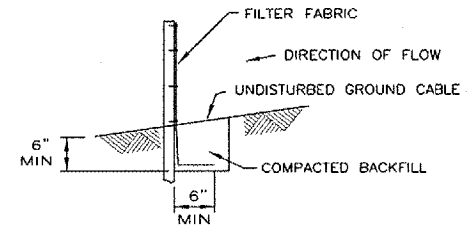


ELEVATION

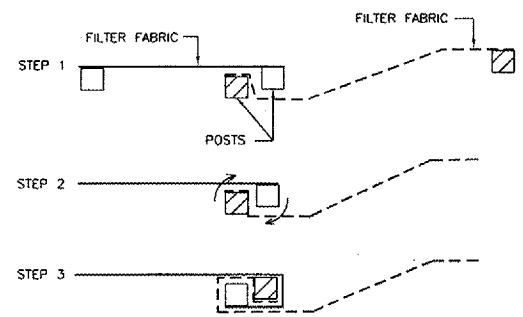


FABRIC ANCHOR DETAIL
 NOT TO SCALE
 FROM NRCS STANDARD DRAWING NO. IL-620

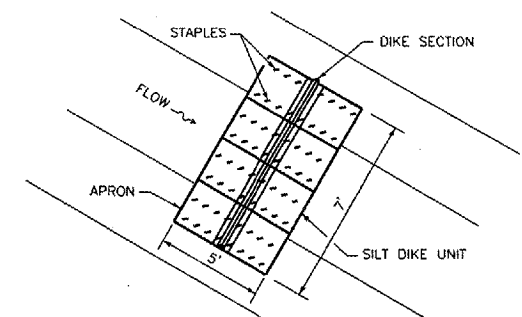
- NOTES:**
1. TEMPORARY SEDIMENT FENCE SHALL BE INSTALLED PRIOR TO ANY GRADING WORK IN THE AREA TO BE PROTECTED. THEY SHALL BE MAINTAINED THROUGHOUT THE CONSTRUCTION PERIOD AND REMOVED IN CONJUNCTION WITH THE FINAL GRADING AND SITE STABILIZATION.
 2. FILTER FABRIC SHALL MEET THE REQUIREMENTS OF MATERIAL SPECIFIED FOR ITEM AR156000 EROSION CONTROL IN THE ILLINOIS DEPARTMENT OF TRANSPORTATION, DIVISION OF AERONAUTICS SUPPLEMENTAL SPECIFICATIONS AND RECURRING SPECIAL PROVISIONS.
 3. MAINTENANCE SHALL BE PERFORMED AS NEEDED AND MATERIAL REMOVED WHEN "BULGES" DEVELOP IN THE SILT FENCE. MAINTENANCE, WHICH INCLUDES THE REPLACEMENT OF DAMAGED FENCE, SHALL BE CONSIDERED INCIDENTAL TO THE COST OF THE EROSION CONTROL FENCE.
 4. SILT FENCE SHALL BE INSTALLED PER STORM WATER POLLUTION PREVENTION PLAN OR AS DIRECTED BY THE ENGINEER.
 5. FENCE POSTS SHALL BE EITHER STANDARD STEEL POSTS OR WOOD POSTS WITH A MINIMUM CROSS-SECTIONAL AREA OF 3.0 SQ. IN..
 6. PLACE THE END POST OF THE SECOND FENCE INSIDE THE END POST OF THE FIRST FENCE.
 7. ROTATE BOTH POSTS AT LEAST 180 DEGREES IN A CLOCKWISE DIRECTION TO CREATE A TIGHT SEAL WITH THE FABRIC MATERIAL.
 8. DRIVE BOTH POSTS A MINIMUM OF 18 INCHES INTO THE GROUND AND BURY THE FLAP.

NOTES FOR ALL INLET PROTECTION

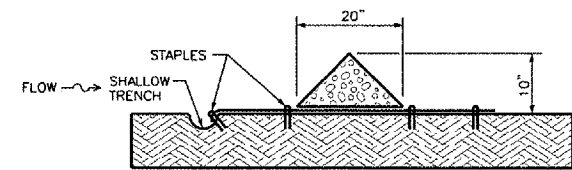
1. SILT FENCE AND SPACERS SHALL NOT BE MEASURED SEPARATELY FOR PAYMENT, BUT WILL BE INCLUDED IN THE UNIT PRICE FOR INLET PROTECTION.
2. INSPECTION SHALL BE FREQUENT AND REPAIR / REPLACEMENT SHALL BE MADE PROMPTLY AS NEEDED.
3. AFTER FINAL APPROVAL OF THE ENGINEER, SILT FENCE MAY BE REMOVED. CONTRACTOR SHALL PLACE SEED AND MULCH OVER THE DISTURBED AREAS.
4. SILT FILTER FABRIC SHALL MEET THE REQUIREMENTS OF MATERIAL SPECIFIED FOR ITEM AR156000 EROSION CONTROL IN THE ILLINOIS DEPARTMENT OF TRANSPORTATION DIVISION OF AERONAUTICS SUPPLEMENTAL SPECIFICATIONS AND RECURRING SPECIAL PROVISIONS.



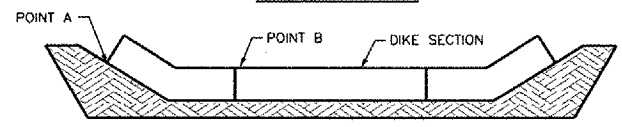
ATTACHING TWO SILT FENCES
 NOT TO SCALE
 FROM NRCS STANDARD DRAWING NO. IL-620



PLAN



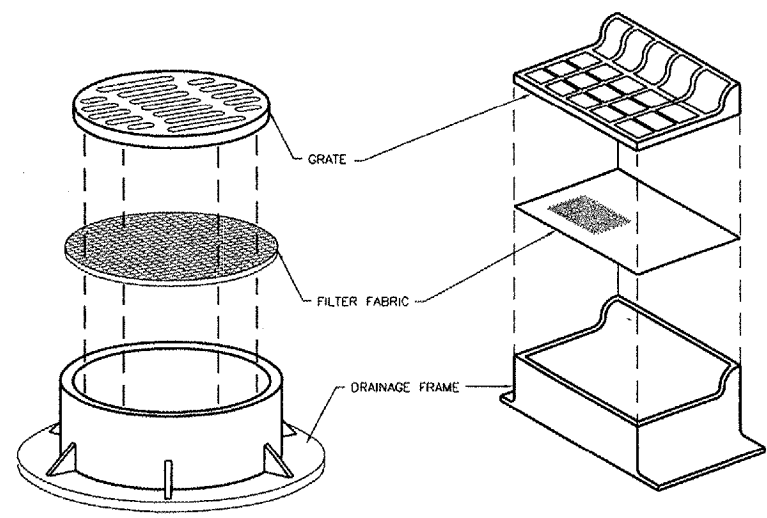
SIDE ELEVATION



POINT A MUST BE HIGHER THAN POINT B TO ENSURE THAT WATER FLOWS OVER THE DIKE AND NOT AROUND THE ENDS.

FRONT ELEVATION

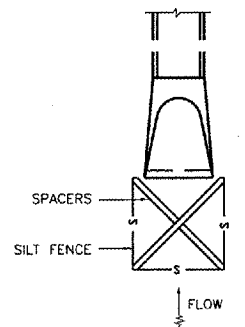
URETHANE FOAM/GEOTEXTILE DITCH CHECK
 NOT TO SCALE



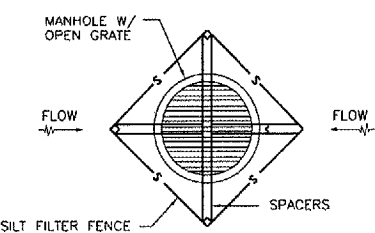
NOTES:

1. FILTER WRAP TO BE PLACED IN ALL SLOPE BOXES, INLETS, MANHOLES, TRENCH DRAINS AND CATCH BASINS LOCATED IN PAVED AREAS AND NONPAVED AREAS.
2. FABRIC SHALL BE IN CONFORMANCE WITH MATERIALS SPECIFIED FOR FABRIC FENCE.
3. FABRIC SHALL OVERLAY FRAME BY 2-INCH (MINIMUM).
4. CONTRACTOR SHALL CLEAR DEBRIS AND SILT AS REQUIRED FROM FABRIC TO MAINTAIN DRAINAGE THROUGH THE STRUCTURE.
5. FABRIC SHALL REMAIN IN PLACE UNTIL TURFED AREAS HAVE DEVELOPED A MINIMUM OF 80% OF COVERAGE.
6. COST OF FILTER WRAP SHALL BE CONSIDERED INCIDENTAL TO AR156000 EROSION CONTROL.

DRAINAGE STRUCTURE FILTER WRAP
 NOT TO SCALE



INLET PROTECTION (END SECTION)
 NOT TO SCALE
 IDOT STANDARD 280001-03



INLET PROTECTION (INLET/MANHOLES)
 NOT TO SCALE
 IDOT STANDARD 280001-03

REVISIONS

NUMBER	BY	DATE

0 1 2
 THIS BAR IS EQUAL TO 2" AT FULL SCALE (34X22).

CHICAGO ROCKFORD INTERNATIONAL AIRPORT
 ROCKFORD, ILLINOIS

STORMWATER POLLUTION
 PREVENTION PLAN DETAILS

Copyright CMT, Inc.
CMT
 CRAWFORD, MURPHY & TILLY, INC.
 CONSULTING ENGINEERS
 License No. 184-000613

Chicago Rockford International Airport

DESIGN BY:	MLK
DRAWN BY:	JRO
CHECKED BY:	DKP
APPROVED BY:	
DATE:	02/29/08
JOB No:	07258-06
ILLINOIS PROJECT: RFD-3787 A.I.P. PROJECT: 3-17-0088-XX	
FINAL SUBMITTAL	
SHEET	8 OF 83 SHEETS