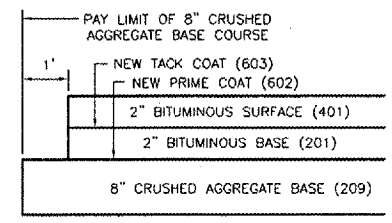
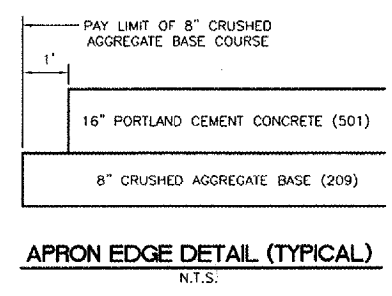
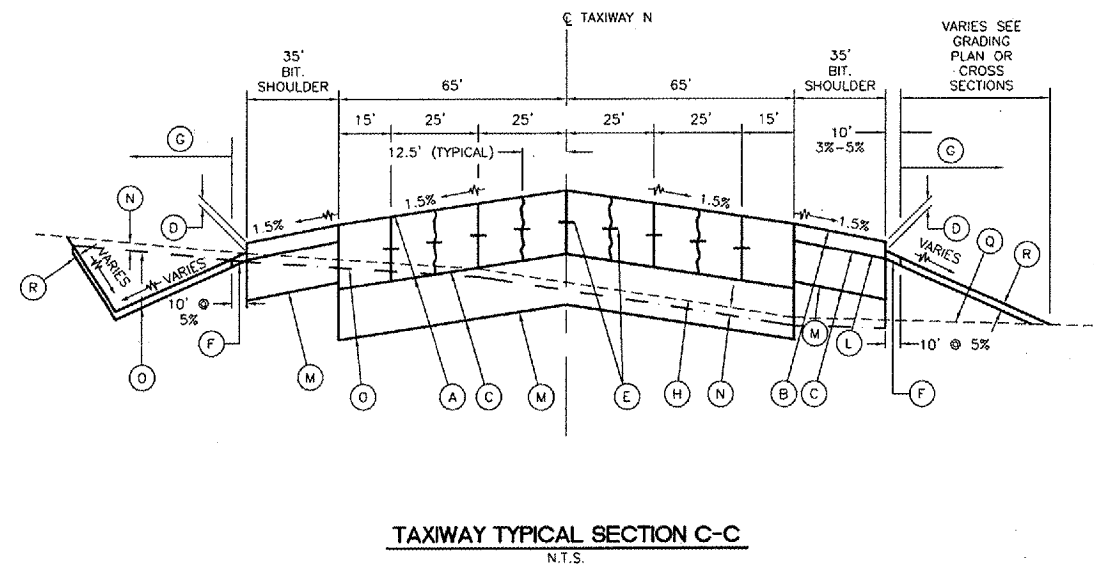
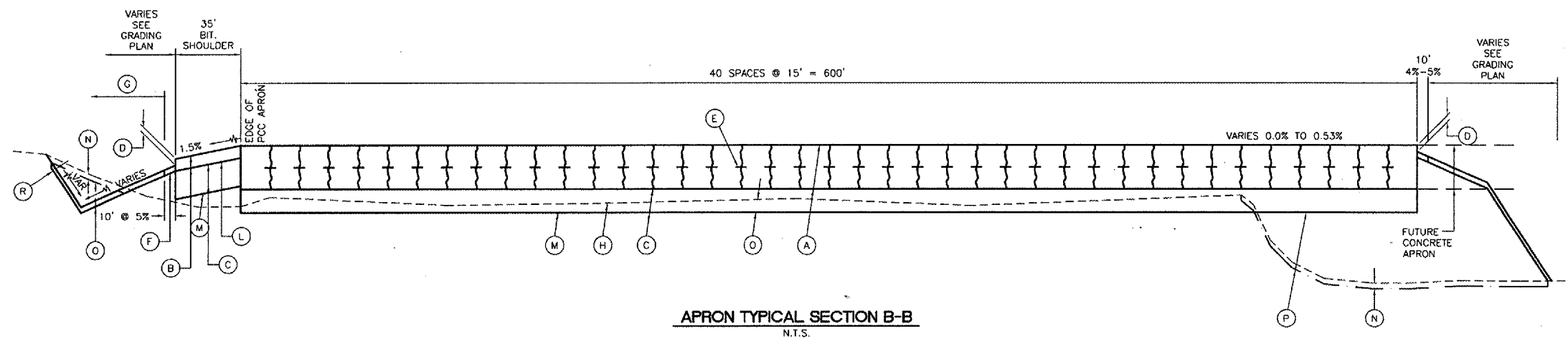
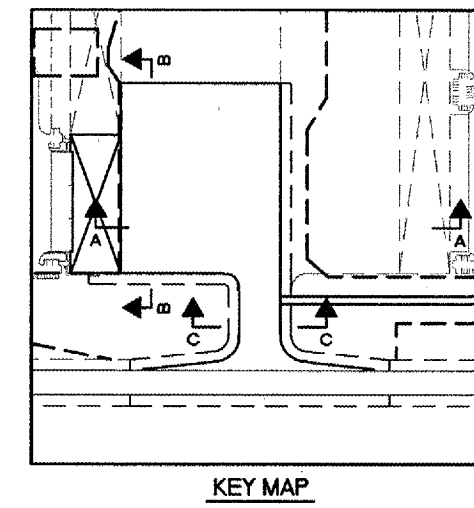
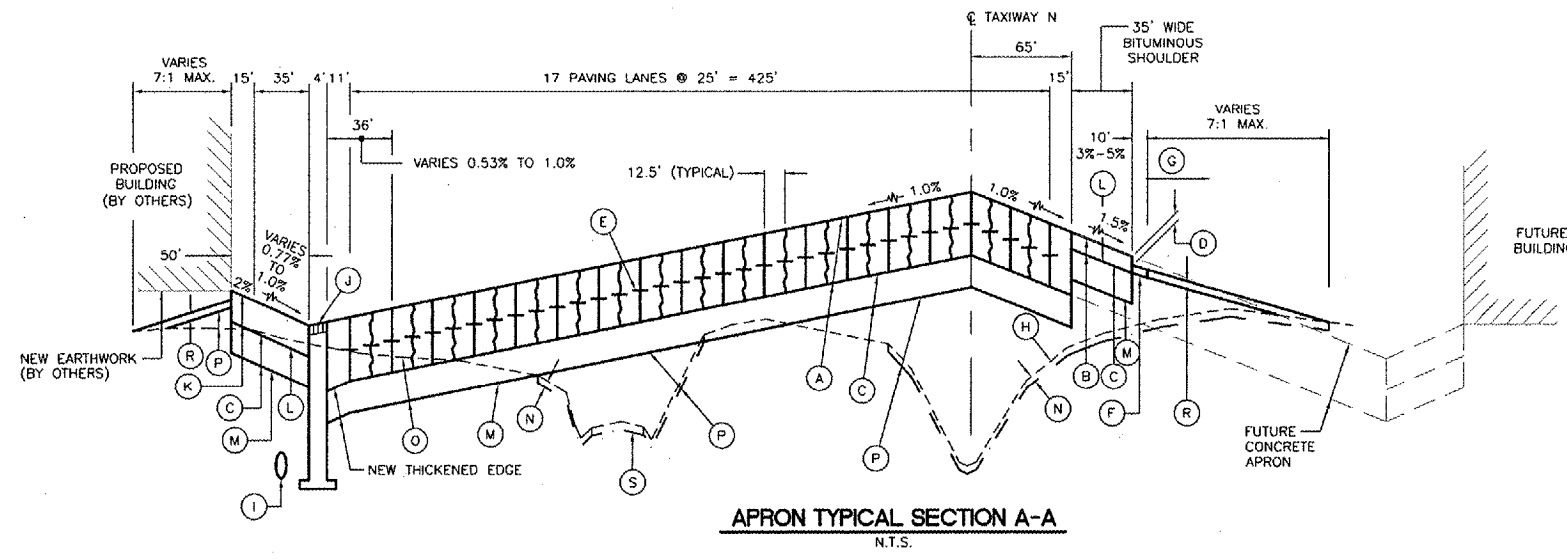


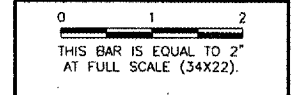
FILE: Nw-lytsec-1.dwg  
 LAYOUT: Layout1  
 UPDATE BY: Jeremy Linke  
 SURVEY BOOK #  
 DATE: Thursday, April 03, 2008 11:25:12 AM  
 XREF DWG: tbcfrt.dwg  
 nwc-base.DWG



- LEGEND**
- (A) NEW 16" PORTLAND CEMENT CONCRETE (501)
  - (B) NEW 2" BITUMINOUS SURFACE COURSE (401)  
NEW 2" BITUMINOUS BASE COURSE (201)  
NEW TACK COAT (603) BETWEEN LIFTS
  - (C) NEW 8" CRUSHED AGGREGATE BASE COURSE (209)
  - (D) NEW 1-1/2" DROP FROM EDGE OF PAVEMENT TO TURF
  - (E) NEW DOWEL BAR
  - (F) NEW SEEDING AND SOIL GUARD (901 AND 800)
  - (G) NEW SEEDING AND MULCHING (901 AND 908)
  - (H) EXISTING GROUNDLINE
  - (I) NEW STORM SEWER
  - (J) NEW TRENCH DRAIN STRUCTURE
  - (K) NEW 3" BITUMINOUS SURFACE COURSE (401)  
NEW 5" BITUMINOUS BASE COURSE (201)  
NEW TACK COAT (603) BETWEEN LIFTS
  - (L) NEW BITUMINOUS PRIME COAT (602)
  - (M) NEW SOIL STABILIZATION FABRIC (152)
  - (N) NEW 4" AVERAGE TOPSOIL STRIPPING (152)(SEE CROSS SECTIONS)
  - (O) NEW UNCLASSIFIED EXCAVATION (152)
  - (P) NEW EMBANKMENT FILL (152)
  - (Q) NEW SHOULDER FILL (152)
  - (R) NEW 4" TOPSOIL PLACEMENT (152)
  - (S) NEW BITUMINOUS PAVEMENT REMOVAL (401)

**REVISIONS**

NUMBER	BY	DATE



CHICAGO ROCKFORD INTERNATIONAL AIRPORT  
ROCKFORD, ILLINOIS

TYPICAL SECTIONS

© Copyright CMT, Inc.

**CMT**  
 CRAWFORD, MURPHY & TILLY, INC.  
 CONSULTING ENGINEERS  
 License No. 84-000813

**Chicago Rockford International Airport**

DESIGN BY:	CAL / DKP
DRAWN BY:	JRO
CHECKED BY:	CAL
APPROVED BY:	
DATE:	02/29/08
JOB No:	07258-06
ILLINOIS PROJECT: RFD-3787 A.I.P. PROJECT: 3-17-0088-XX	
<b>FINAL SUBMITTAL</b>	
SHEET 9 OF 83 SHEETS	