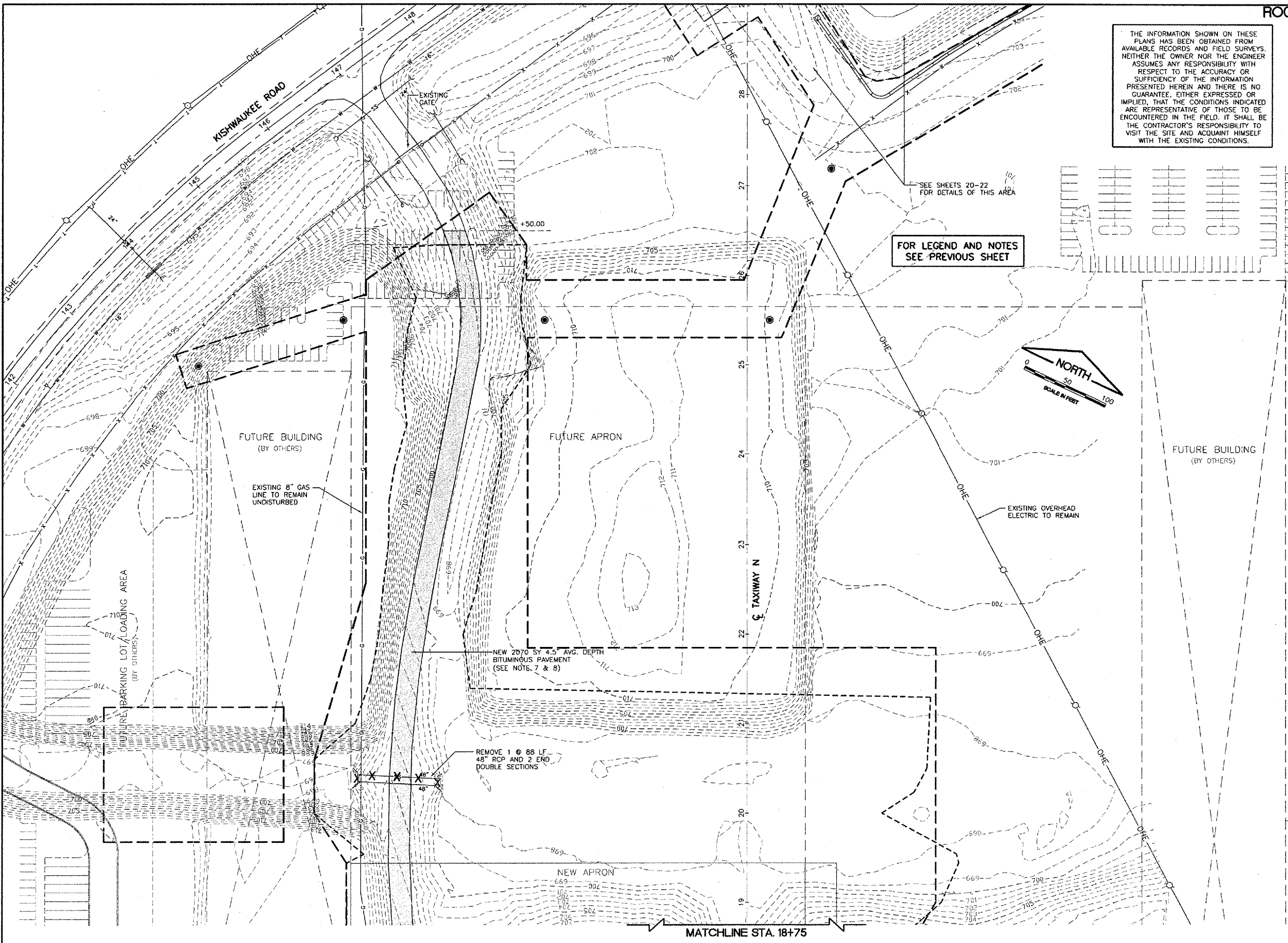
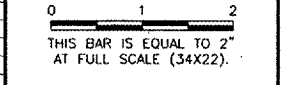


K:\Rockford\072506 NW Air Cargo Dev\Draw\Sheet
FILE: Nw-econd-2.dwg
LAYOUT: Layout1
UPDATE BY: Jeremy Linke
SURVEY BOOK #
DATE: Thursday, April 03, 2008 11:25:56 AM
XREF DWG: tbcint.dwg
nwc-base.dwg
etopo.dwg
topo.dwg
newllwest.DWG
etopo by others.dwg

THE INFORMATION SHOWN ON THESE PLANS HAS BEEN OBTAINED FROM AVAILABLE RECORDS AND FIELD SURVEYS. NEITHER THE OWNER NOR THE ENGINEER ASSUMES ANY RESPONSIBILITY WITH RESPECT TO THE ACCURACY OR SUFFICIENCY OF THE INFORMATION PRESENTED HEREIN AND THERE IS NO GUARANTEE, EITHER EXPRESSED OR IMPLIED, THAT THE CONDITIONS INDICATED ARE REPRESENTATIVE OF THOSE TO BE ENCOUNTERED IN THE FIELD. IT SHALL BE THE CONTRACTOR'S RESPONSIBILITY TO VISIT THE SITE AND ACQUAINT HIMSELF WITH THE EXISTING CONDITIONS.

REVISIONS		
NUMBER	BY	DATE



FOR LEGEND AND NOTES SEE PREVIOUS SHEET



CHICAGO ROCKFORD INTERNATIONAL AIRPORT
ROCKFORD, ILLINOIS

EXISTING CONDITIONS/PROPOSED REMOVALS
SHEET 2

© Copyright CMT, Inc.

CMT
CRAWFORD, MURPHY & TILLY, INC.
CONSULTING ENGINEERS
License No. 194-000613

Chicago Rockford International Airport

DESIGN BY:	CAL
DRAWN BY:	JRO
CHECKED BY:	CAL
APPROVED BY:	
DATE:	02/29/08
JOB No:	07258-06
ILLINOIS PROJECT:	RFD-3787
A.I.P. PROJECT:	3-17-0088-XX
FINAL SUBMITTAL	
SHEET 11 OF 83 SHEETS	

MATCHLINE STA. 18+75