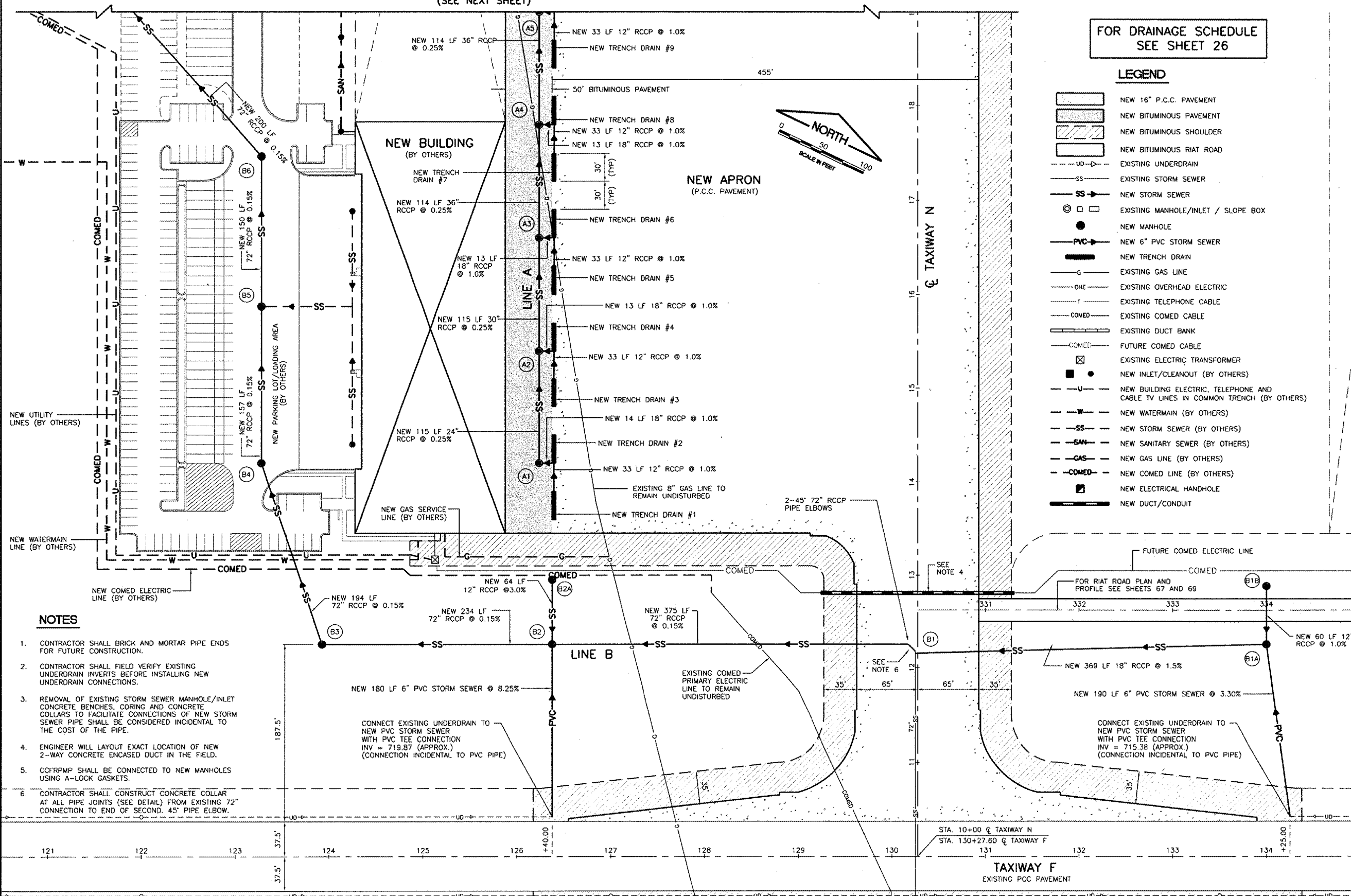
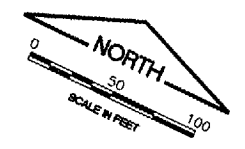


MATCHLINE STA. 19+00  
 (SEE NEXT SHEET)

FOR DRAINAGE SCHEDULE  
 SEE SHEET 26

**LEGEND**

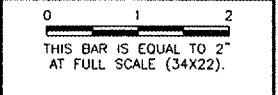
- NEW 16" P.C.C. PAVEMENT
- NEW BITUMINOUS PAVEMENT
- NEW BITUMINOUS SHOULDER
- NEW BITUMINOUS RIAT ROAD
- EXISTING UNDERDRAIN
- EXISTING STORM SEWER
- NEW STORM SEWER
- EXISTING MANHOLE/INLET / SLOPE BOX
- NEW MANHOLE
- NEW 6" PVC STORM SEWER
- NEW TRENCH DRAIN
- EXISTING GAS LINE
- EXISTING OVERHEAD ELECTRIC
- EXISTING TELEPHONE CABLE
- EXISTING COMED CABLE
- EXISTING DUCT BANK
- FUTURE COMED CABLE
- EXISTING ELECTRIC TRANSFORMER
- NEW INLET/CLEANOUT (BY OTHERS)
- NEW BUILDING ELECTRIC, TELEPHONE AND CABLE TV LINES IN COMMON TRENCH (BY OTHERS)
- NEW WATERMAIN (BY OTHERS)
- NEW STORM SEWER (BY OTHERS)
- NEW SANITARY SEWER (BY OTHERS)
- NEW GAS LINE (BY OTHERS)
- NEW COMED LINE (BY OTHERS)
- NEW ELECTRICAL HANDHOLE
- NEW DUCT/CONDUIT



- NOTES**
1. CONTRACTOR SHALL BRICK AND MORTAR PIPE ENDS FOR FUTURE CONSTRUCTION.
  2. CONTRACTOR SHALL FIELD VERIFY EXISTING UNDERDRAIN INVERTS BEFORE INSTALLING NEW UNDERDRAIN CONNECTIONS.
  3. REMOVAL OF EXISTING STORM SEWER MANHOLE/INLET CONCRETE BENCHES, CORING AND CONCRETE COLLARS TO FACILITATE CONNECTIONS OF NEW STORM SEWER PIPE SHALL BE CONSIDERED INCIDENTAL TO THE COST OF THE PIPE.
  4. ENGINEER WILL LAYOUT EXACT LOCATION OF NEW 2-WAY CONCRETE ENCASED DUCT IN THE FIELD.
  5. CCFRPM SHALL BE CONNECTED TO NEW MANHOLES USING A-LOCK GASKETS.
  6. CONTRACTOR SHALL CONSTRUCT CONCRETE COLLAR AT ALL PIPE JOINTS (SEE DETAIL) FROM EXISTING 72\" CONNECTION TO END OF SECOND, 45\" PIPE ELBOW.

**REVISIONS**

NUMBER	BY	DATE



**CHICAGO ROCKFORD INTERNATIONAL AIRPORT  
 ROCKFORD, ILLINOIS**  
  
**DRAINAGE, SANITARY AND UTILITY PLAN  
 APRON - SHEET 1**

© Copyright CMT, Inc.  
**CMT**  
 CRAMFORD, MURPHY & TULLY, INC.  
 CONSULTING ENGINEERS  
 License No. 084-000613

DESIGN BY:	CAL / JRL
DRAWN BY:	JRO
CHECKED BY:	CAL
APPROVED BY:	
DATE:	02/29/08
JOB No:	07258-06
ILLINOIS PROJECT:	RFD-3787
A.I.P. PROJECT:	3-17-0088-XX
<b>FINAL SUBMITTAL</b>	
SHEET 18 OF 83 SHEETS	