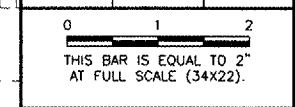


REVISIONS		
NUMBER	BY	DATE



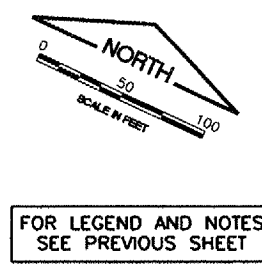
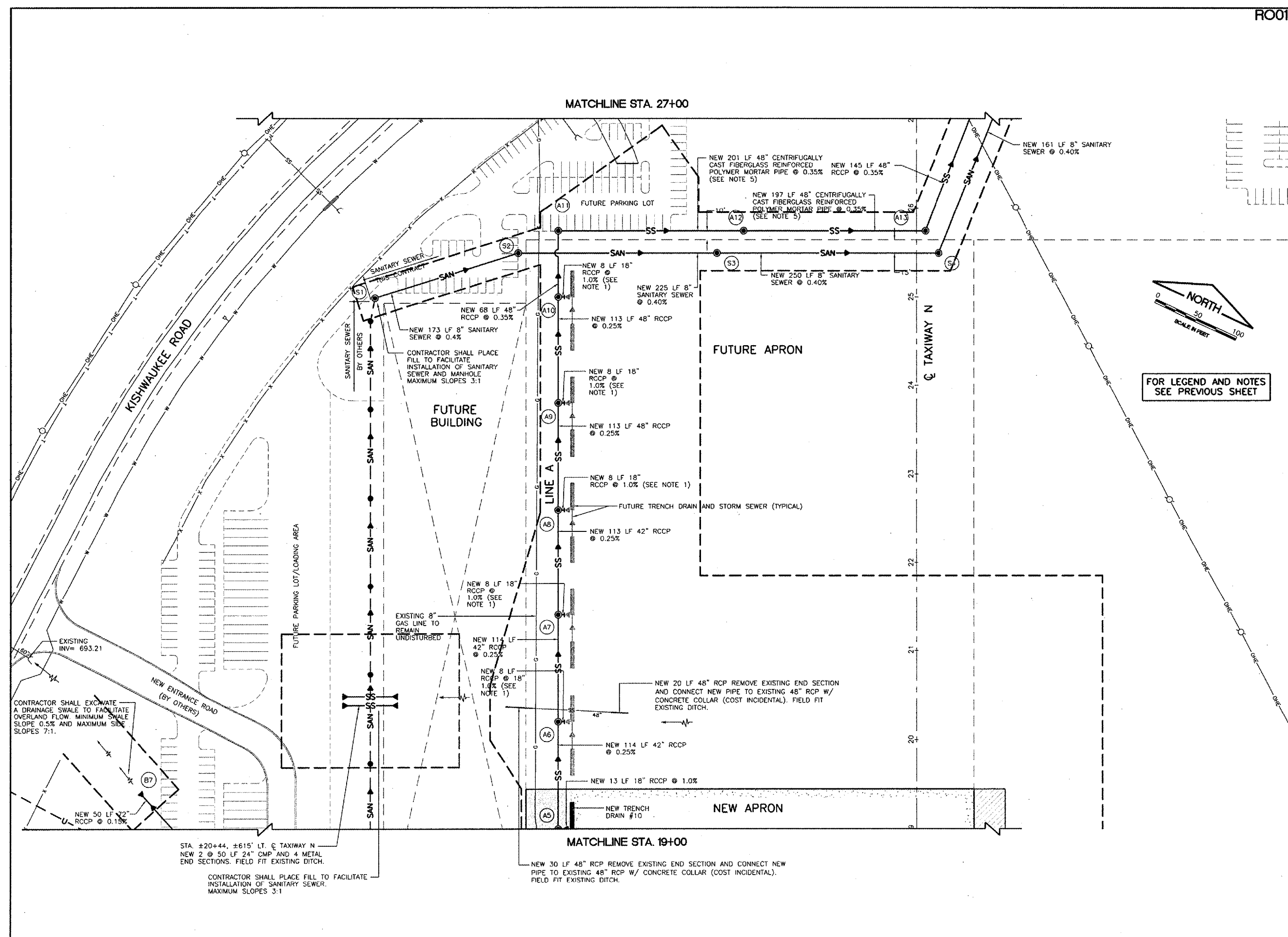
**CHICAGO ROCKFORD INTERNATIONAL AIRPORT  
 ROCKFORD, ILLINOIS**

**DRAINAGE, SANITARY AND UTILITY PLAN  
 APRON - SHEET 2**

© Copyright CMT, Inc.  
**CMT**  
 CRAWFORD, MURPHY & TILLY, INC.  
 CONSULTING ENGINEERS  
 License No. 84-000613

**Chicago Rockford International Airport**

DESIGN BY:	CAL / JRL
DRAWN BY:	JRO
CHECKED BY:	CAL
APPROVED BY:	
DATE:	02/29/08
JOB No:	07258-06
ILLINOIS PROJECT:	RFD-3787
A.I.P. PROJECT:	3-17-0088-XX
<b>FINAL SUBMITTAL</b>	
SHEET 19 OF 83 SHEETS	



CONTRACTOR SHALL EXCAVATE A DRAINAGE SWALE TO FACILITATE OVERLAND FLOW. MINIMUM SWALE SLOPE 0.5% AND MAXIMUM SIDE SLOPES 7:1.

STA. ±20+44, ±615' LT. © TAXIWAY N  
 NEW 2 @ 50 LF 24" CMP AND 4 METAL END SECTIONS. FIELD FIT EXISTING DITCH.

CONTRACTOR SHALL PLACE FILL TO FACILITATE INSTALLATION OF SANITARY SEWER. MAXIMUM SLOPES 3:1

CONTRACTOR SHALL PLACE FILL TO FACILITATE INSTALLATION OF SANITARY SEWER AND MANHOLE. MAXIMUM SLOPES 3:1

NEW 30 LF 48" RCP REMOVE EXISTING END SECTION AND CONNECT NEW PIPE TO EXISTING 48" RCP W/ CONCRETE COLLAR (COST INCIDENTAL). FIELD FIT EXISTING DITCH.

NEW 20 LF 48" RCP REMOVE EXISTING END SECTION AND CONNECT NEW PIPE TO EXISTING 48" RCP W/ CONCRETE COLLAR (COST INCIDENTAL). FIELD FIT EXISTING DITCH.