

FOR LEGEND AND NOTES
 SEE SHEET 18



| REVISIONS | | |
|-----------|----|------|
| NUMBER | BY | DATE |
| | | |
| | | |
| | | |

0 1 2
 THIS BAR IS EQUAL TO 2"
 AT FULL SCALE (34x22).

MATCHLINE STA. 176+00

CHICAGO ROCKFORD INTERNATIONAL AIRPORT
 ROCKFORD, ILLINOIS

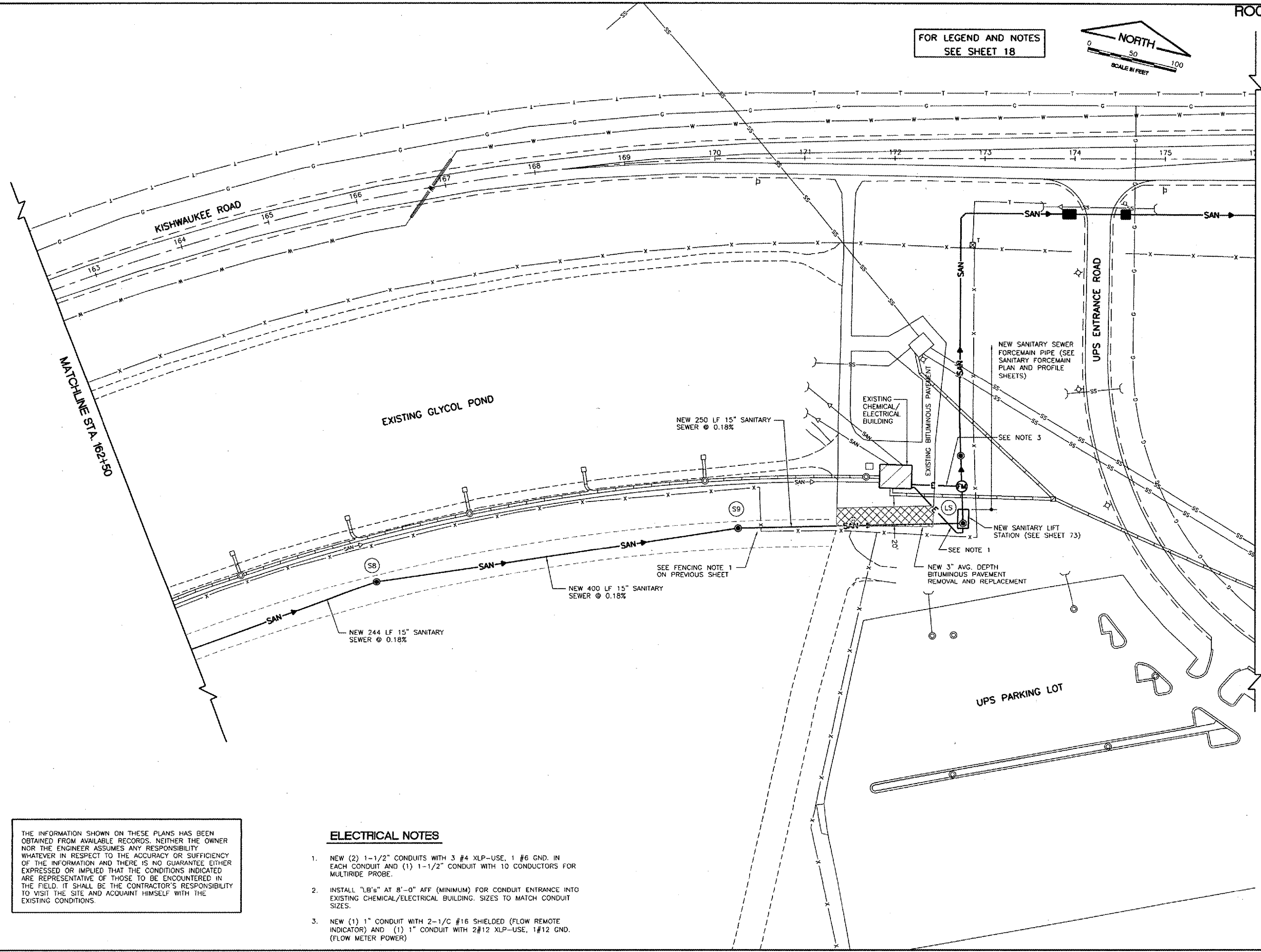
**DRAINAGE, SANITARY AND UTILITY PLAN
 APRON - SHEET 4**

© Copyright CMT, Inc.

CMT
 CRAMER, MURPHY & TILLY, INC.
 CONSULTING ENGINEERS
 License No. 84-000615

Chicago
 Rockford
 International
 Airport

| | |
|------------------------|--------------|
| DESIGN BY: | CAL |
| DRAWN BY: | JRO |
| CHECKED BY: | CAL |
| APPROVED BY: | |
| DATE: | 02/29/08 |
| JOB No: | 07258-06 |
| ILLINOIS PROJECT: | RFD-3787 |
| A.I.P. PROJECT: | 3-17-0088-XX |
| FINAL SUBMITTAL | |
| SHEET 21 OF 83 SHEETS | |



THE INFORMATION SHOWN ON THESE PLANS HAS BEEN OBTAINED FROM AVAILABLE RECORDS. NEITHER THE OWNER NOR THE ENGINEER ASSUMES ANY RESPONSIBILITY WHATSOEVER IN RESPECT TO THE ACCURACY OR SUFFICIENCY OF THE INFORMATION AND THERE IS NO GUARANTEE EITHER EXPRESSED OR IMPLIED THAT THE CONDITIONS INDICATED ARE REPRESENTATIVE OF THOSE TO BE ENCOUNTERED IN THE FIELD. IT SHALL BE THE CONTRACTOR'S RESPONSIBILITY TO VISIT THE SITE AND ACQUAINT HIMSELF WITH THE EXISTING CONDITIONS.

ELECTRICAL NOTES

- NEW (2) 1-1/2" CONDUITS WITH 3 #4 XLP-USE, 1 #6 GND. IN EACH CONDUIT AND (1) 1-1/2" CONDUIT WITH 10 CONDUCTORS FOR MULTIRIDE PROBE.
- INSTALL "LB's" AT 8'-0" AFF (MINIMUM) FOR CONDUIT ENTRANCE INTO EXISTING CHEMICAL/ELECTRICAL BUILDING. SIZES TO MATCH CONDUIT SIZES.
- NEW (1) 1" CONDUIT WITH 2-1/C #16 SHIELDED (FLOW REMOTE INDICATOR) AND (1) 1" CONDUIT WITH 2#12 XLP-USE, 1#12 GND. (FLOW METER POWER)