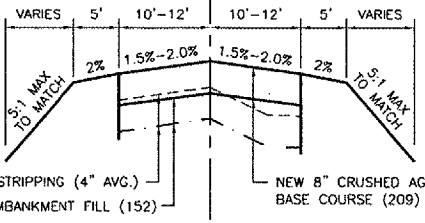
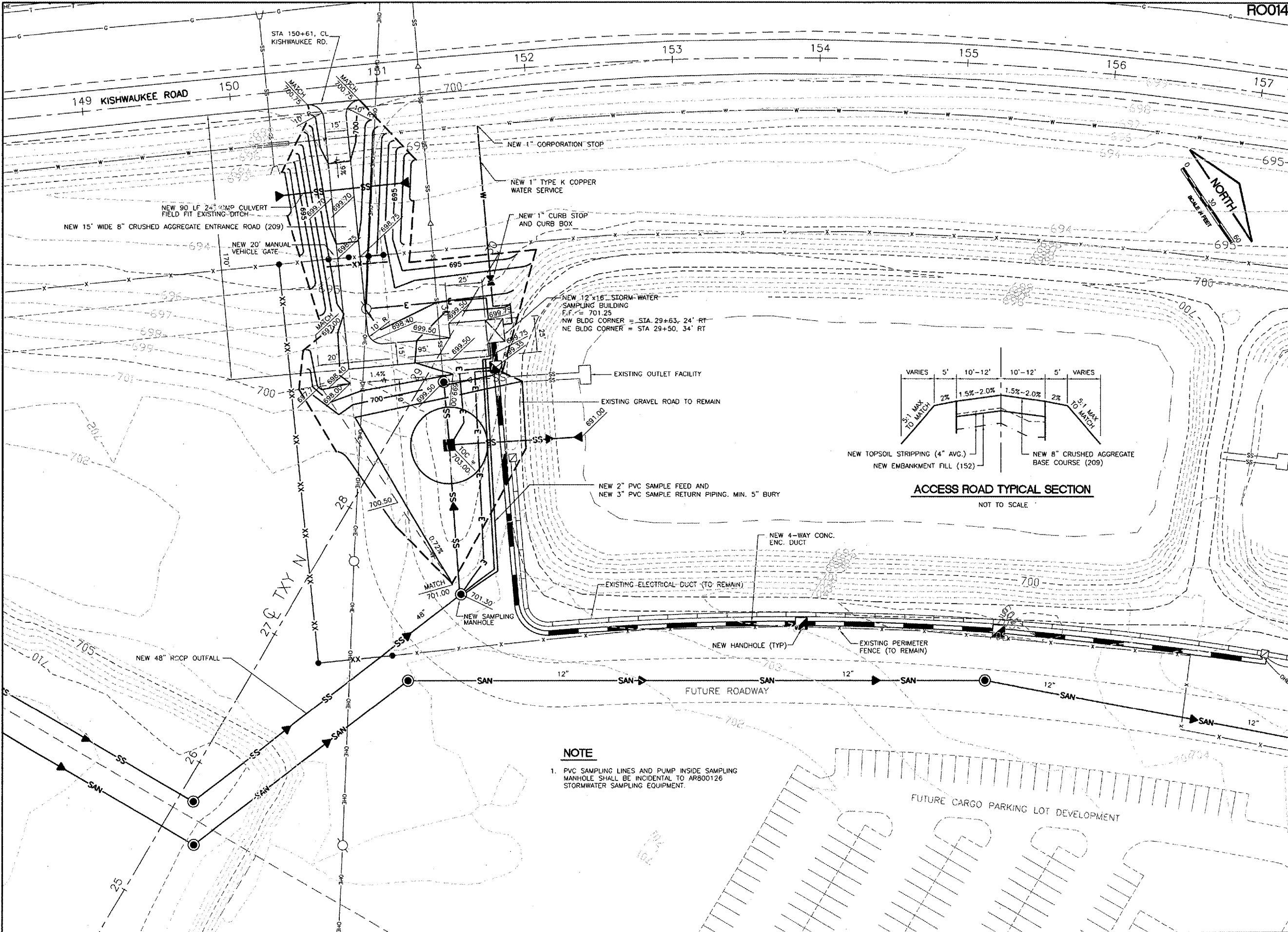
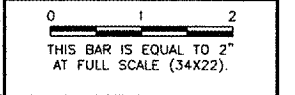


K:\Rockford\0725806 HW Air Cargo Dev\Draw\Sheet
 FILE: Nw-div-struct.dwg
 LAYOUT: Layout1
 UPDATE BY: Jeremy Linke
 SURVEY BOOK #
 DATE: Thursday, April 03, 2008 11:27:49 AM
 XREF DWG: tbcint.dwg
 nwc-base.dwg
 etopo.dwg
 topo.dwg
 newfillwest.DWG
 etopo by others.dwg

REVISIONS		
NUMBER	BY	DATE



ACCESS ROAD TYPICAL SECTION
NOT TO SCALE

NOTE

- PVC SAMPLING LINES AND PUMP INSIDE SAMPLING MANHOLE SHALL BE INCIDENTAL TO AR800126 STORMWATER SAMPLING EQUIPMENT.

**CHICAGO ROCKFORD INTERNATIONAL AIRPORT
ROCKFORD, ILLINOIS**

DIVERSION STRUCTURE SITE PLAN

CMT
 CRAWFORD, MURPHY & TILLY, INC.
 CONSULTING ENGINEERS
 License No. BR-000613



DESIGN BY:	DLP
DRAWN BY:	JRO
CHECKED BY:	DLP
APPROVED BY:	
DATE:	02/29/08
JOB No:	07258-06
ILLINOIS PROJECT:	RFD-3787
A.I.P. PROJECT:	3-17-0088-XX
FINAL SUBMITTAL	
SHEET 22 OF 83 SHEETS	