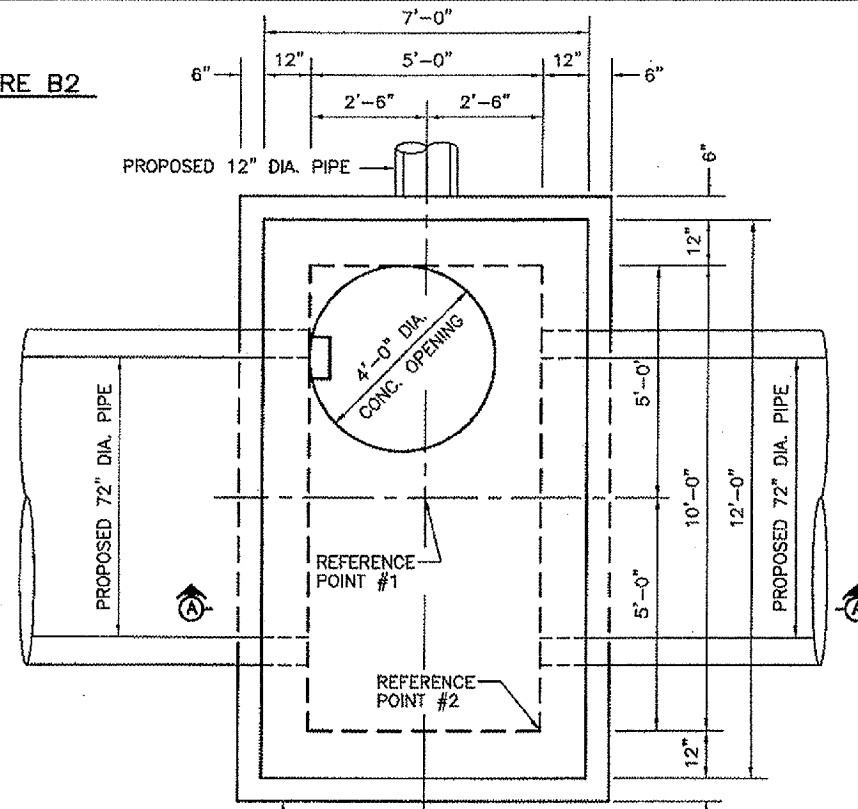
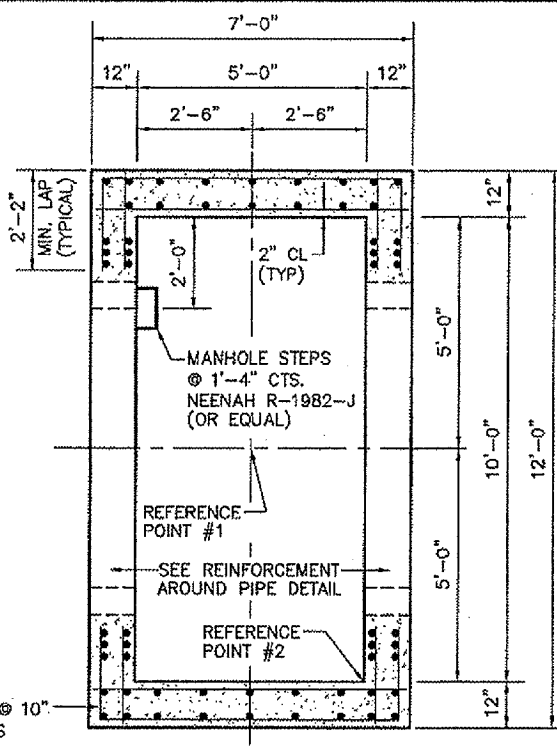


**STRUCTURE B2**

RO014  
 K:\Rockford\1725806 NY Air Cargo Dev\Draw\Sheet  
 FILE: Nw-struct-b2.dwg  
 LAYOUT: Layout1  
 UPDATE BY: Jeremy Linke  
 SURVEY BOOK #  
 DATE: Thursday, April 03, 2008 11:28:27 AM  
 XREF DWG: Tb.dwg  
 tbcint.dwg



**PLAN VIEW**  
 1/2" = 1'-0"



**WALL REINFORCEMENT PLAN**  
 1/2" = 1'-0"

**DESIGN CRITERIA**

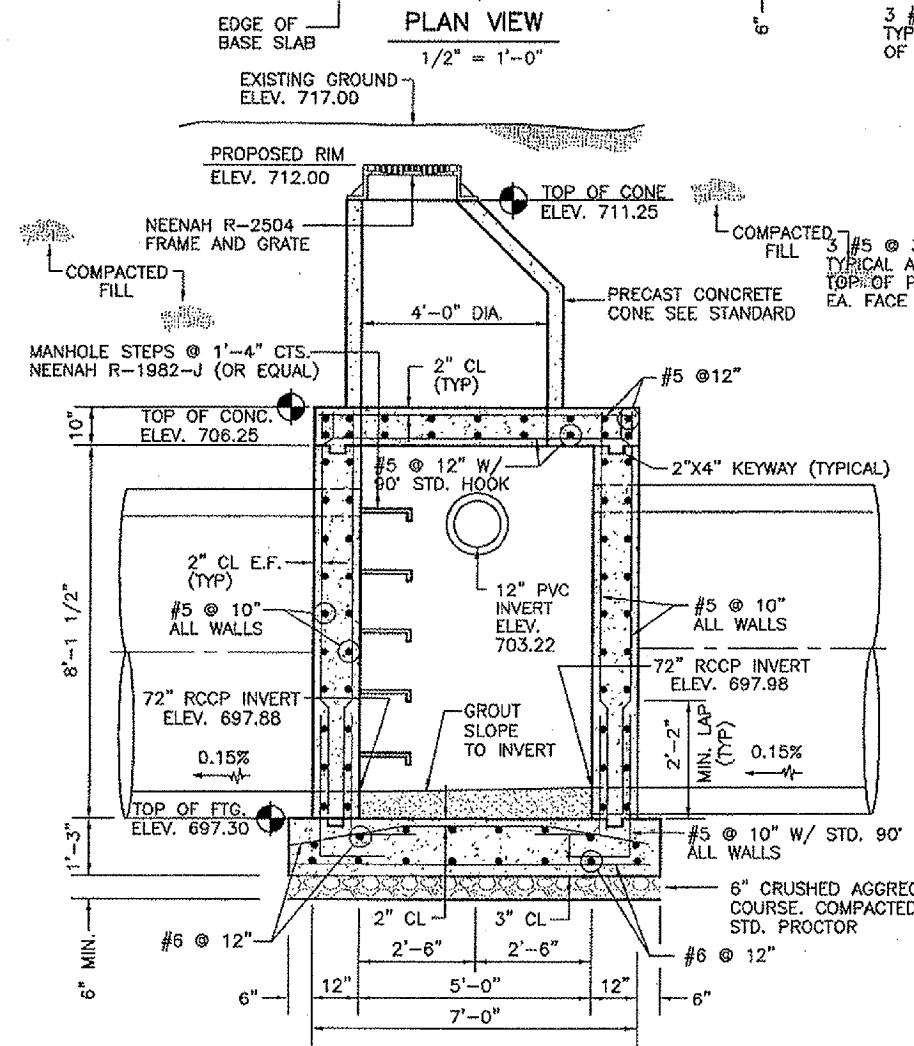
L.L. = AASHTO HS 20-44  
 NET ALLOWABLE SOIL BEARING PRESSURE = 3000 PSF

**GENERAL NOTES**

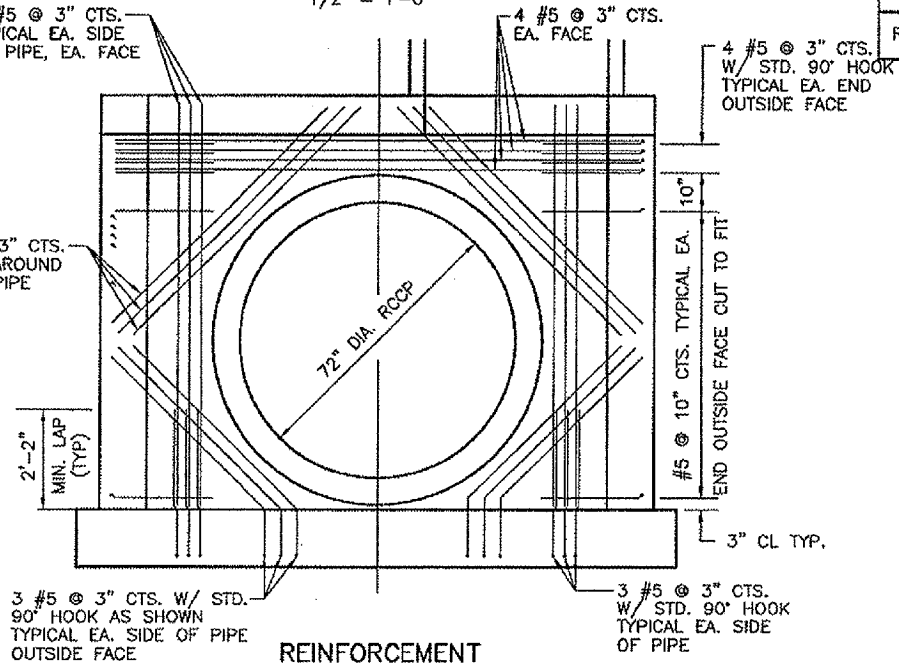
1. ALL REINFORCEMENT BARS SHALL CONFORM TO ASTM A615 GRADE 60 AND SHALL BE CLEAN AND FREE OF GREASE, SCALING RUST AND OTHER FOREIGN MATERIALS.
2. INLET MAY BE CONSTRUCTED BY CAST-IN-PLACE CONCRETE OR PRECAST CONCRETE. PRECAST CONCRETE INLETS SHALL BE CONSTRUCTED TO THE LINES, DIMENSIONS AND DETAILS SHOWN ON THIS SHEET.
3. CAST-IN-PLACE CONCRETE AND PRECAST CONCRETE FOR THE INLETS SHALL HAVE A MINIMUM 28 DAYS COMPRESSIVE STRENGTH OF 4000 PSF.
4. THE CONTRACTOR SHALL VERIFY THE LOCATION AND SIZE OF PIPE OPENINGS AS SHOWN ON THIS SHEET.
5. ALL FOOTING EXCAVATIONS SHALL BE CLEAN FREE OF DEBRIS, STANDING WATER AND LOOSE SOIL AND SHALL BE INSPECTED BY THE ENGINEER PRIOR TO THE PLACEMENT OF CONCRETE OR SUBBASE.
6. CONCRETE SHALL NOT BE PLACED OVER FROZEN OR MUDDY SOIL.
7. ADDITIONAL REINFORCEMENT FOR PIPE PENETRATIONS NOT REQUIRED FOR 6" DIA. PIPES OR LESS.

**REFERENCE POINT TABLE**

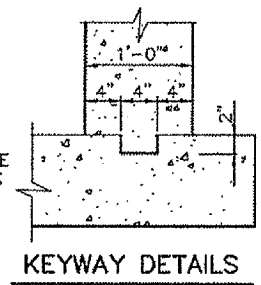
REFERENCE POINT	STATION	OFFSET
REFERENCE POINT #1	12+25.00	390.00' LT.
REFERENCE POINT #2	12+20.00	387.50' LT.



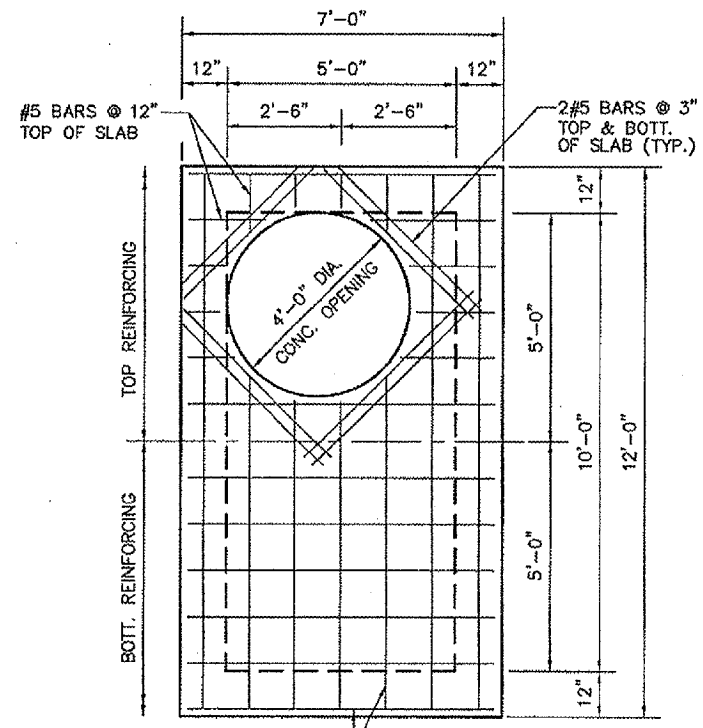
**SECTION A-A**  
 1/2" = 1'-0"



**REINFORCEMENT AROUND PIPE PENETRATIONS**  
 N.T.S.



**KEYWAY DETAILS**  
 N.T.S.

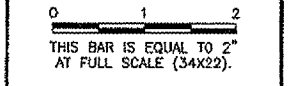


**TOP SLAB REINFORCEMENT PLAN**  
 1/2" = 1'-0"

**REGISTERED PROFESSIONAL ENGINEER**  
 STATE OF ILLINOIS  
 AHMAD TALAL S. IDRIS  
 081-005783  
 SPRINGFIELD ILLINOIS  
 4/3/08  
 EXP. 11-30-08  
 SHEETS 28 THRU 32

**REVISIONS**

NUMBER	BY	DATE



**CHICAGO ROCKFORD INTERNATIONAL AIRPORT**  
 ROCKFORD, ILLINOIS

**MANHOLE DETAILS - SHEET 1**

**CMT**  
 CRAWFORD, MURPHY & TILLY, INC.  
 CONSULTING ENGINEERS  
 License No. 84-00065

Chicago Rockford International Airport

DESIGN BY: ATI  
 DRAWN BY: JRO  
 CHECKED BY: ATI  
 APPROVED BY:  
 DATE: 02/29/08  
 JOB No: 07258-06  
 ILLINOIS PROJECT: RFD-3787  
 A.I.P. PROJECT: 3-17-0088-XX  
**FINAL SUBMITTAL**  
 SHEET 28 OF 83 SHEETS