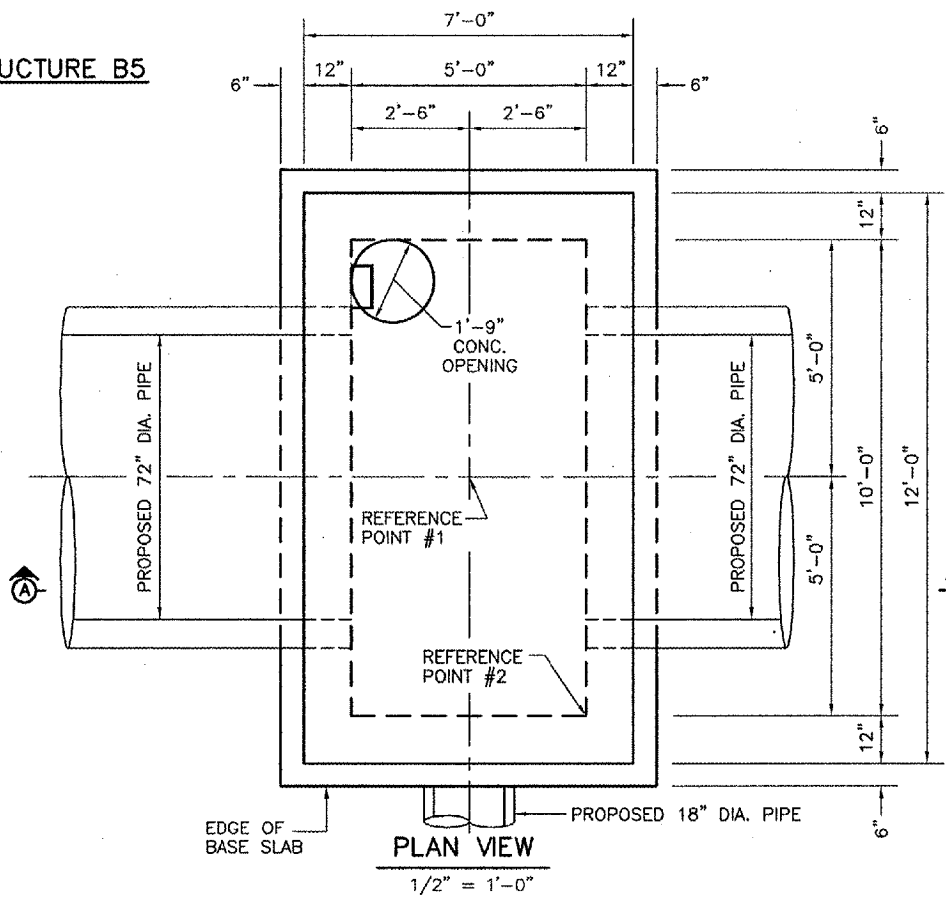
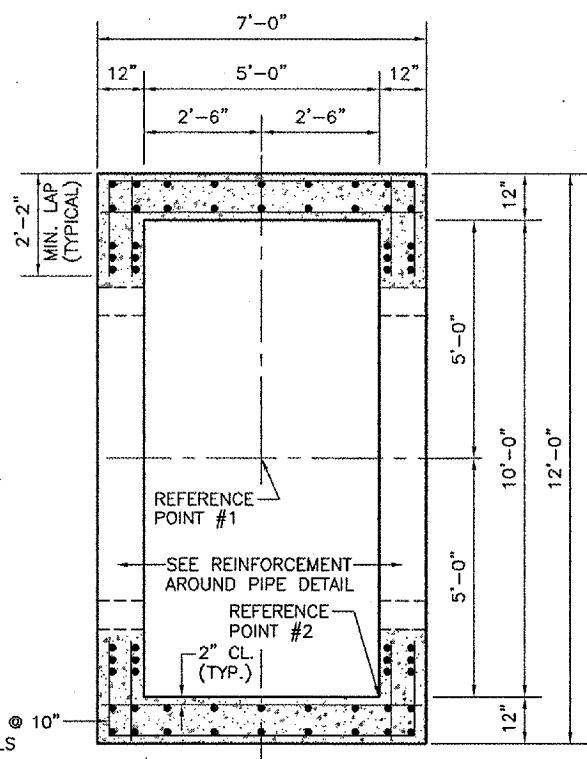


STRUCTURE B5



PLAN VIEW
1/2" = 1'-0"



WALL REINFORCEMENT PLAN
1/2" = 1'-0"

DESIGN CRITERIA

LL. = AASHTO HS 20-44
 NET ALLOWABLE SOIL BEARING PRESSURE = 3000 PSF

GENERAL NOTES

1. ALL REINFORCEMENT BARS SHALL CONFORM TO ASTM A615 GRADE 60 AND SHALL BE CLEAN AND FREE OF GREASE, SCALING RUST AND OTHER FOREIGN MATERIALS.
2. INLET MAY BE CONSTRUCTED BY CAST-IN-PLACE CONCRETE OR PRECAST CONCRETE. PRECAST CONCRETE INLETS SHALL BE CONSTRUCTED TO THE LINES, DIMENSIONS AND DETAILS SHOWN ON THIS SHEET.
3. CAST-IN-PLACE CONCRETE AND PRECAST CONCRETE FOR THE INLETS SHALL HAVE A MINIMUM 28 DAYS COMPRESSIVE STRENGTH OF 4000 PSF.
4. THE CONTRACTOR SHALL VERIFY THE LOCATION AND SIZE OF PIPE OPENINGS AS SHOWN ON THIS SHEET.
5. ALL FOOTING EXCAVATIONS SHALL BE CLEAN FREE OF DEBRIS, STANDING WATER AND LOOSE SOIL AND SHALL BE INSPECTED BY THE ENGINEER PRIOR TO THE PLACEMENT OF CONCRETE OR SUBBASE.
6. CONCRETE SHALL NOT BE PLACED OVER FROZEN OR MUDDY SOIL.
7. ADDITIONAL REINFORCEMENT FOR PIPE PENETRATIONS NOT REQUIRED FOR 6" DIA. PIPES OR LESS.

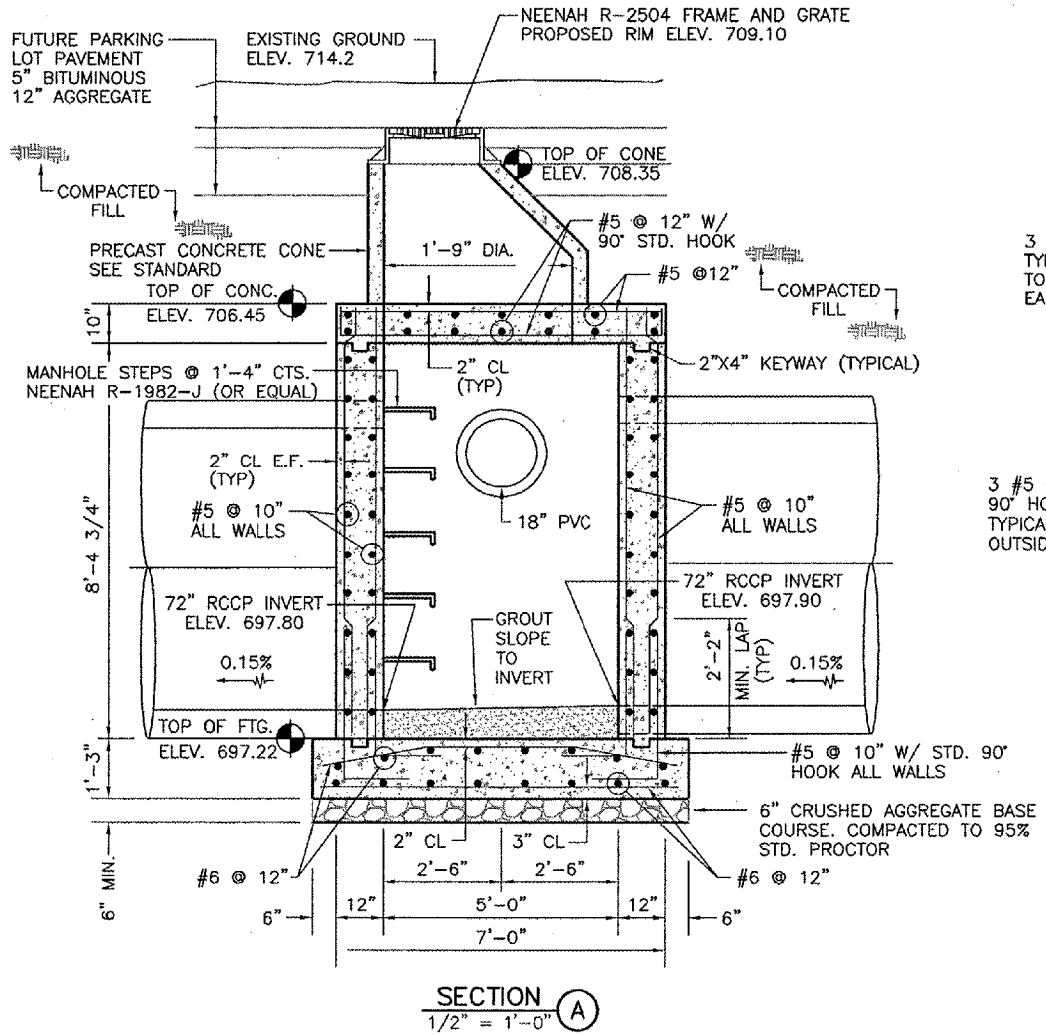
REFERENCE POINT TABLE

REFERENCE POINT	STATION	OFFSET
REFERENCE POINT #1	15+86.81	700.00' LT.
REFERENCE POINT #2	15+84.31	705.00' LT.

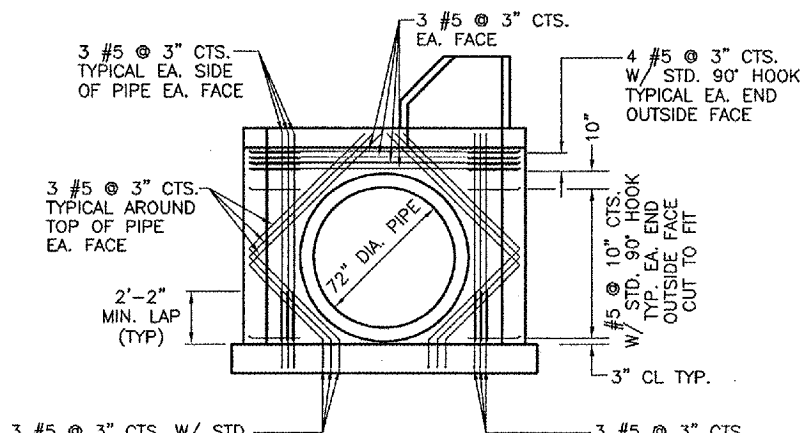
REVISIONS

NUMBER	BY	DATE

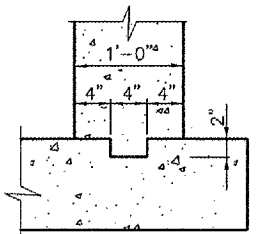
0 1 2
 THIS BAR IS EQUAL TO 2" AT FULL SCALE (34X22).



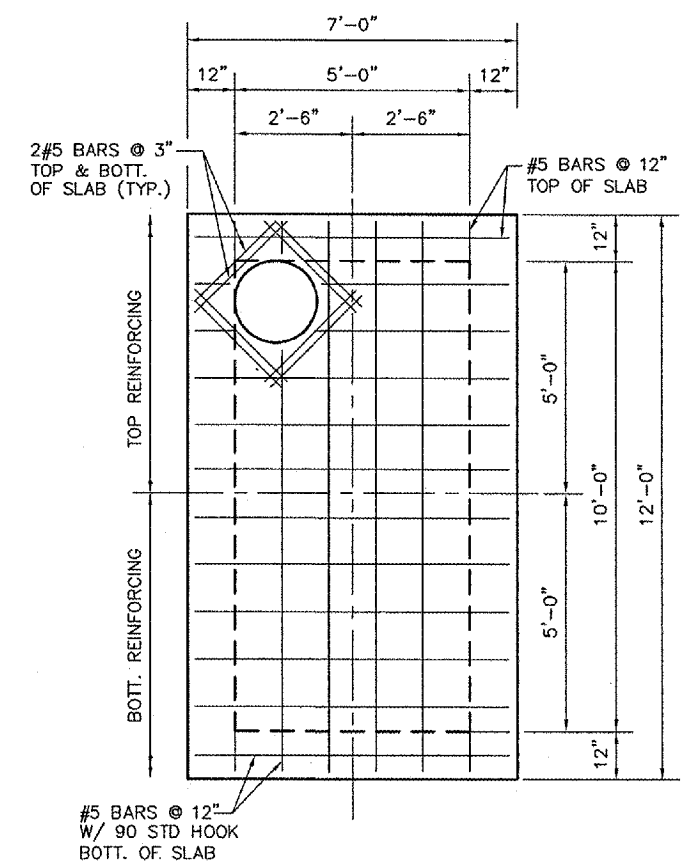
SECTION A
1/2" = 1'-0"



REINFORCEMENT AROUND PIPE PENETRATIONS
N.T.S.



KEYWAY DETAILS
N.T.S.



TOP SLAB REINFORCEMENT PLAN
1/2" = 1'-0"

**CHICAGO ROCKFORD INTERNATIONAL AIRPORT
 ROCKFORD, ILLINOIS**

MANHOLE DETAILS - SHEET 4

Copyright CMT, Inc.

CMT
 CRAWFORD, MURPHY & TILLY, INC.
 CONSULTING ENGINEERS
 License No. 084-00813

Chicago Rockford International Airport

DESIGN BY: ATI
 DRAWN BY: JRO
 CHECKED BY: ATI
 APPROVED BY:
 DATE: 02/29/08
 JOB No: 07258-06
 ILLINOIS PROJECT: RFD-3787
 A.I.P. PROJECT: 3-17-0088-XX
FINAL SUBMITTAL
 SHEET 31 OF 83 SHEETS