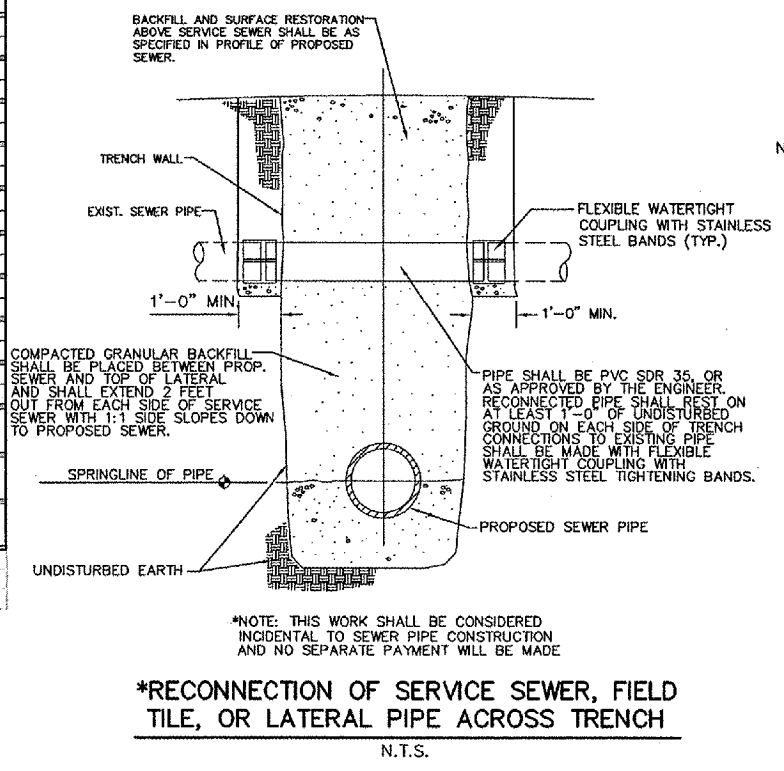
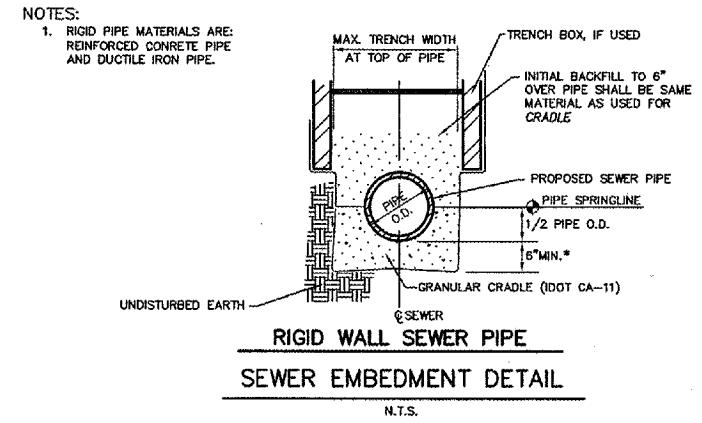
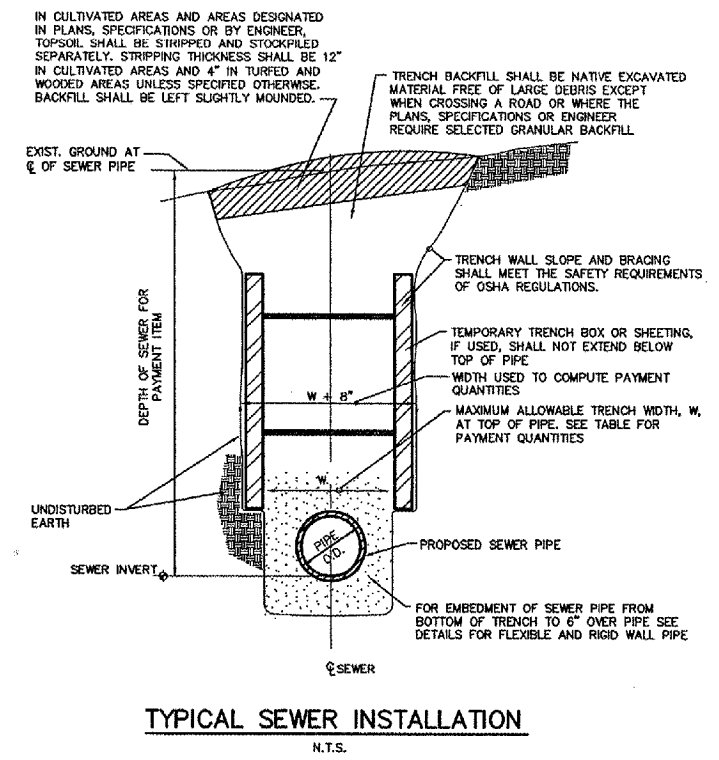
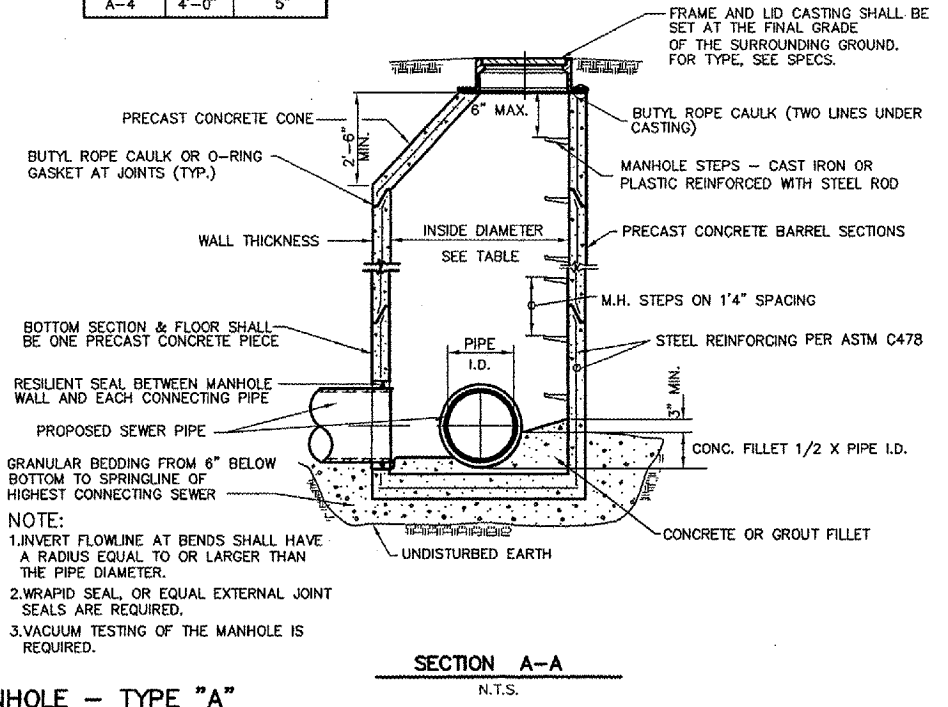
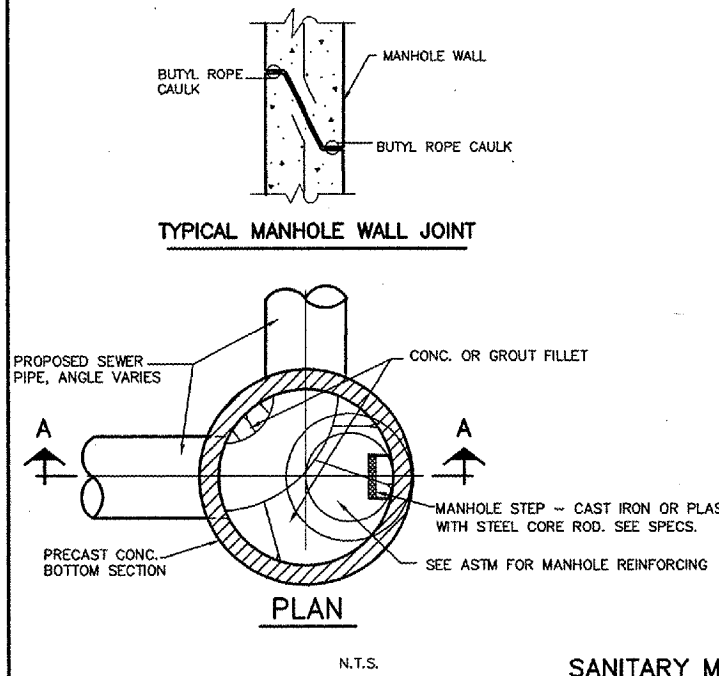


NOTE:  
 ADDITIONAL REQUIREMENTS FOR CONCRETE MANHOLE CASTINGS, AND RESILIENT SEAL AROUND PIPE ARE IN THE SPECIFICATIONS.

MANHOLE TYPE	INSIDE DIA.	MIN. WALL THICKNESS
A-4	4'-0"	5"



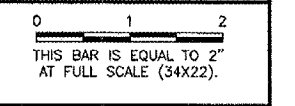
**SANITARY SEWER SCHEDULE**

NO.	DESCRIPTION	STATION	OFFSET	RJM ELEV.	FLOW IN			FLOW OUT			
					INVERT	DIA. (INCHES)	INVERT ELEV.	INVERT	DIA. (INCHES)	INVERT ELEV.	
DS	12'x13' CAST IN PLACE DIVERSION STRUCTURE W/ GRATING (SEE DIVERSION STRUCTURE DETAILS)	28+69 CL TWY N	37' RT	704.20	TOC	S	48	694.35	NW	48	693.85
DSB	24" DUCK BILL CHECK VALVE *	28+76 CL TWY N	130' RT						E	24	694.85
S1	4' TYPE A BIT. COATED SANITARY MANHOLE W/ TYPE 1 FRAME AND CLOSED LID (NEENAH R-1713 OR EQUAL)	24+99 CL TWY N	610' LT	705.39	S	6	699.40	NE	8	699.40	
S2	4' TYPE A BIT. COATED SANITARY MANHOLE W/ TYPE 1 FRAME AND CLOSED LID (NEENAH R-1713 OR EQUAL)	25+50 CL TWY N	449' LT	714.18	SW	8	698.69	E	8	698.59	
S3	4' TYPE A BIT. COATED SANITARY MANHOLE W/ NEENAH (OR EQUAL) R 3492 FRAME AND CLOSED LID W/ GASKET SEAL	24+99 CL TWY N	225' LT	708.80	W	8	697.67	E	8	696.21	
S4	4' TYPE A BIT. COATED SANITARY MANHOLE W/ NEENAH (OR EQUAL) R 3492 FRAME AND CLOSED LID W/ GASKET SEAL	24+99 CL TWY N	25' RT	709.67	W	8	695.21	N	8	695.11	
S5	4' TYPE A BIT. COATED SANITARY MANHOLE W/ TYPE 1 FRAME AND CLOSED LID (NEENAH R-1713 OR EQUAL)	27+19 CL TWY N	93' RT	702.24	S	8	694.39	NE	8	694.29	
S6	4' TYPE A BIT. COATED SANITARY MANHOLE W/ TYPE 1 FRAME AND CLOSED LID (NEENAH R-1713 OR EQUAL)	155+42 CL KISH. RD.	416' RT	704.69	SW	8	692.73	E	15	691.61	
S7	4' TYPE A BIT. COATED SANITARY MANHOLE W/ TYPE 1 FRAME AND CLOSED LID (NEENAH R-1713 OR EQUAL)	160+32 CL KISH. RD.	419' RT	699.39	SW	15	690.89	NE	15	690.89	
S8	4' TYPE A BIT. COATED SANITARY MANHOLE W/ TYPE 1 FRAME AND CLOSED LID (NEENAH R-1713 OR EQUAL)	165+22 CL KISH. RD.	417' RT	698.79	SW	15	690.17	E	15	690.17	
S9	4' TYPE A BIT. COATED SANITARY MANHOLE W/ TYPE 1 FRAME AND CLOSED LID (NEENAH R-1713 OR EQUAL)	170+17 CL KISH. RD.	409' RT	700.13	W	15	689.45	E	15	689.45	
LS	LIFT STATION (SEE DETAILS)	172+76 CL KISH. RD.	399' RT	702.50	W	15	689.00			SEE DETAILS	
FM	MAGNETIC FLOW METER IN 6' CONC. VAULT (SEE DETAILS)	ENGINEER TO PROVIDE CONTRACTOR IN THE FIELD								SEE DETAILS	
ARV	AIR RELEASE VALVE VAULT (SEE DETAILS)	192+95 CL KISH. RD.	44' LT							SEE DETAILS	

NOTE: STATION AND OFFSET IS TO CENTER OF STRUCTURE  
 \* SEE SPECIFICATION SECTION 15270

**REVISIONS**

NUMBER	BY	DATE



**CHICAGO ROCKFORD INTERNATIONAL AIRPORT  
 ROCKFORD, ILLINOIS**

**APRON SANITARY SEWER DETAILS  
 AND SANITARY SCHEDULE**

**CMT**  
 CRAWFORD, MURPHY & TILLY, INC.  
 CONSULTING ENGINEERS  
 License No. 184-000613

**Chicago Rockford International Airport**

DESIGN BY: CAL / CAD / JRL  
 DRAWN BY: JRO  
 CHECKED BY: CAL  
 APPROVED BY:  
 DATE: 02/29/08  
 JOB No: 07258-06  
 ILLINOIS PROJECT: RFD-3787  
 A.I.P. PROJECT: 3-17-0088-XX  
**FINAL SUBMITTAL**  
 SHEET 34 OF 83 SHEETS