

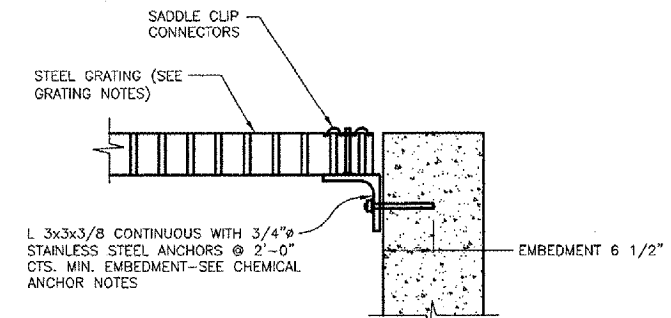
**CHEMICAL ANCHOR NOTES**

- ANCHORS SHALL BE:
1. TYPE S6S ADHESIVE CAPSULE ANCHOR (6 1/2" MINIMUM EMBEDMENT), MANUFACTURED BY WILLIAMS FORM ENGINEERING COMPANY, OR EPCON SYSTEM CERAMIC 6 EPOXY ANCHORS (6 3/4" MINIMUM EMBEDMENT), MANUFACTURED BY ITW RAMSET REDHEAD COMPANY.
  2. USE OF MECHANICAL/EXPANSION TYPE ANCHORS SHALL NOT BE CONSIDERED AS AN ACCEPTABLE ALTERNATE TO THE SPECIFIED CHEMICAL ANCHOR SYSTEMS.

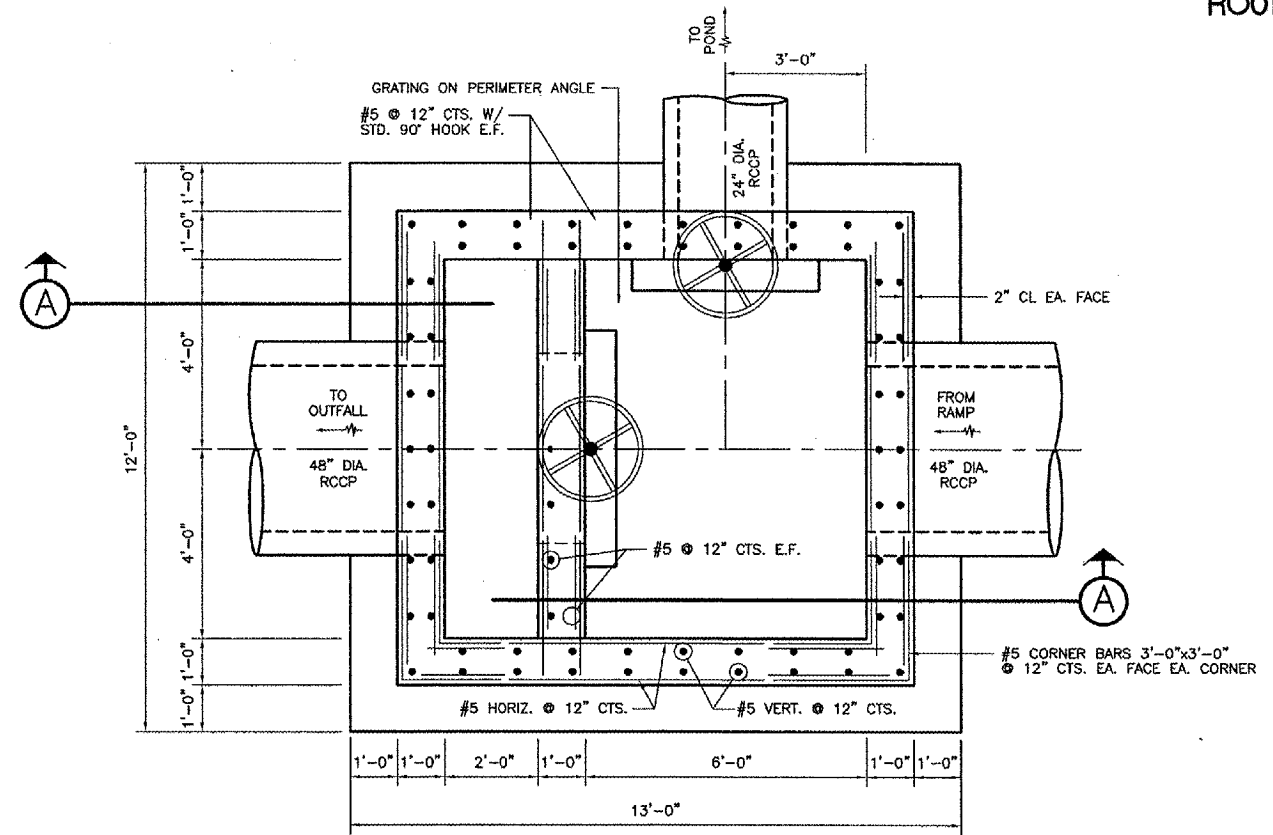
**GRATING NOTES**

STEEL GRATING TO BE WELDFORGED RECTANGULAR DESIGN, TYPE W/B AS MANUFACTURED BY IKG INDUSTRIES OR EQUAL. MAIN BEARING BARS TO BE 2 1/2" X 3/16" SPACED 1 3/16" INCHES CENTER-TO-CENTER. CROSS BARS TO BE RESISTANCE WELDED AT RIGHT ANGLES TO THE BEARING BARS. THEY SHALL BE SPACED 4 INCHES CENTER-TO-CENTER. NO CUTTING OR NOTCHING OF BEARING BARS BEFORE WELDING IS PERMISSIBLE. GRATING SAFE UNIFORM LOAD = 200 LB/SF ON A 102 INCH SPAN AND DEFLECTION LESS THAN 0.5 INCHES. FINISH TO BE GALVANIZED. MATERIAL TO BE ATSM A-569.

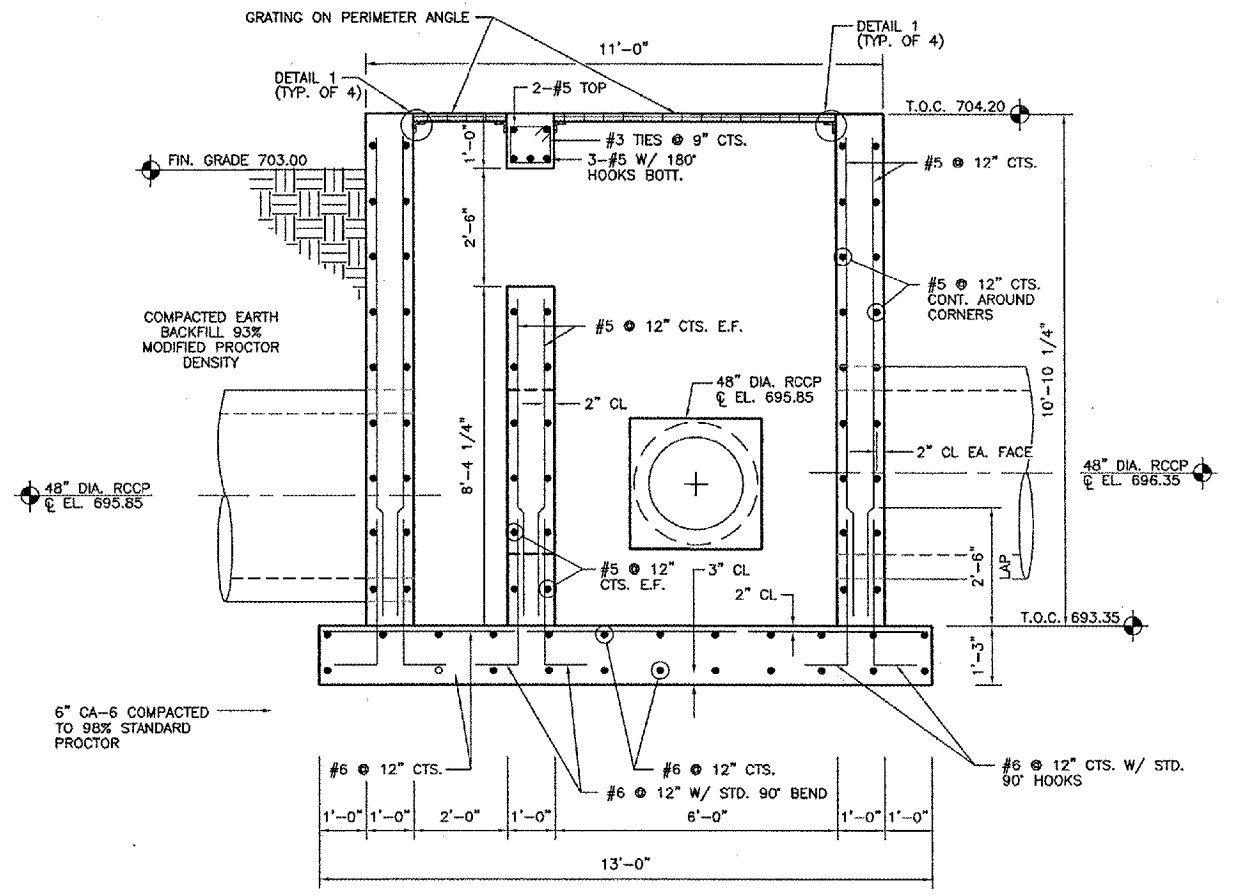
CONTRACTOR SHALL CUT OUT GRATING FOR SLIDE GATE FRAME PENETRATIONS THROUGH GRATING AT LOCATIONS SHOWN ON SHEET 35, DIVERSION STRUCTURE PLAN, SECTION, AND DETAILS.



**GRATING WALL CONNECTION DETAIL 1**  
 N.T.S.



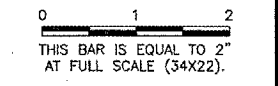
**PLAN VIEW**  
 1/2"=1'-0"



**SECTION A-A**  
 1/2"=1'-0"

**REVISIONS**

| NUMBER | BY | DATE |
|--------|----|------|
|        |    |      |
|        |    |      |
|        |    |      |



CHICAGO ROCKFORD INTERNATIONAL AIRPORT  
 ROCKFORD, ILLINOIS

**DIVERSION STRUCTURE  
 STRUCTURAL PLAN AND SECTION**

© Copyright CMT, Inc.

**CMT**  
 CRAWFORD, MURPHY & TILLY, INC.  
 CONSULTING ENGINEERS  
 License No. 184-00893

Chicago Rockford International Airport

|                        |              |
|------------------------|--------------|
| DESIGN BY:             | CAD/ATI      |
| DRAWN BY:              | JRO/CAD      |
| CHECKED BY:            | DLP          |
| APPROVED BY:           |              |
| DATE:                  | 02/29/08     |
| JOB No:                | 07258-06     |
| ILLINOIS PROJECT:      | RFD-3787     |
| A.I.P. PROJECT:        | 3-17-0088-XX |
| <b>FINAL SUBMITTAL</b> |              |
| SHEET 36 OF 83 SHEETS  |              |