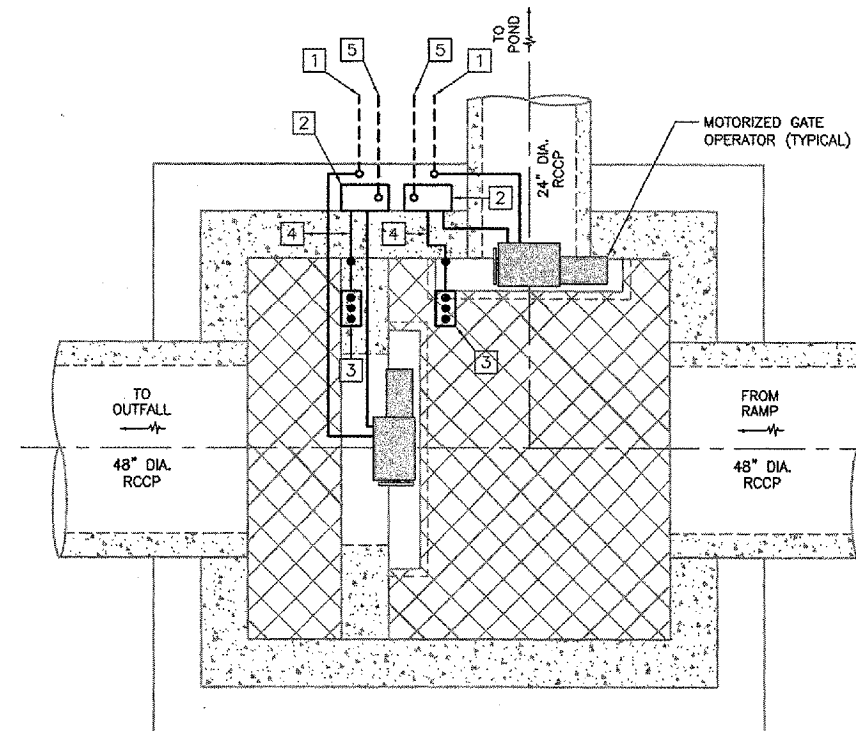


**NOTES:**

- ① OPERATOR LOCAL CONTROL STATION MAY BE INTEGRAL TO OPERATOR HOUSING IF OPERATOR IS ACCESSIBLE AND INSTALLED BELOW 5'-6" A.F.F.
  - ② SCHEMATIC SHOWN IS INTENDED TO INDICATE FUNCTIONAL CONTROL REQUIREMENTS. CONTRACTOR AND SUPPLIERS SHALL COORDINATE TO PROVIDE ALL EQUIPMENT NECESSARY UTILIZING PROPOSED OPERATORS AND CONTROL SYSTEM FEATURES AS INDICATED.
- △ - TERMINAL IN OPERATOR LOCAL CONTROL STATION
  - - TERMINAL IN VALVE OPERATOR
  - - TERMINAL IN PLC CONTROL PANEL

**DIVERSION STRUCTURE MOTORIZED GATE SCHEMATIC**



**PLAN VIEW**  
 1/2" = 1'-0"

ALL ELECTRICAL WORK RELATED TO DIVERSION STRUCTURE AND CABLE/CONDUITS BETWEEN DIVERSION STRUCTURE, SAMPLING MANHOLE AND STORM WATER SAMPLING BUILDING SHALL BE PAID UNDER LUMP SUM PAY ITEM OF STORM WATER SAMPLING BUILDING ELECTRICAL, PAY ITEM 800131

**NOMENCLATURE**

- 1 1" C TO PLC-100 IN STORM WATER SAMPLING BUILDING CONTAINING: 8-#12 XLP-USE, 1-2/C #16 SHIELDED CABLE AND 1-#12 GND
- 2 30 AMP, 2-POLE, NON-FUSED SAFETY-SWITCH IN NEMA 4X ENCLOSURE. SECURELY MOUNT ON STRUT SUPPORT WITH TOP OF SWITCH 5'-0" ABOVE WALKWAY. FURNISH LIQUID TIGHT FLEX CONDUIT BETWEEN SWITCH AND OPERATOR.
- 3 LOCAL OPERATOR PUSHBUTTON STATION; NEMA 4X STAINLESS STEEL WITH ALLEN-BRADLEY 800H SERIES OPERATORS, OR EQUIVALENT. MOUNT TOP OF STATION 5'-0" ABOVE WALKWAY.
- 4 3/4" LIQUID-TIGHT FLEXIBLE METAL CONDUIT CONTAINING CONDUCTORS FOR LOCAL OPERATOR STATION.
- 5 1" C TO POWER PANEL PP-1 IN STORM WATER SAMPLING BUILDING CONTAINING: 2 #10 XLP-USE, 1 #10 GND.

REVISIONS		
NUMBER	BY	DATE

0 1 2  
 THIS BAR IS EQUAL TO 2"  
 AT FULL SCALE (34X22).

**CHICAGO ROCKFORD INTERNATIONAL AIRPORT  
 ROCKFORD, ILLINOIS**

**DIVERSION STRUCTURE  
 ELECTRICAL**

© Copyright: CMT, Inc.

**CMT**  
 CRAWFORD, MURPHY & TILLY, INC.  
 CONSULTING ENGINEERS  
 License No. 184-000613

Chicago Rockford International Airport

DESIGN BY: BDH/CAD  
 DRAWN BY: JRO/CAD  
 CHECKED BY: DLP  
 APPROVED BY:  
 DATE: 02/29/08  
 JOB No: 07258-06  
 ILLINOIS PROJECT: RFD-3787  
 A.I.P. PROJECT: 3-17-0088-XX  
**FINAL SUBMITTAL**  
 SHEET 40 OF 83 SHEETS