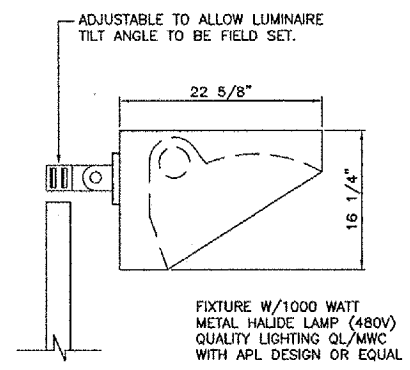


POLE ASSEMBLY SCHEDULE										
POLE NUMBER	MAX. POLE HEIGHT *	LUMINAIRES				CIRCUIT NO.	PAVEMENT ELEVATION	STATION (ALONG & TAXIWAY N)	OFFSET (FROM & TAXIWAY N)	COMMENTS
		NO.	TYPE	LAT. DEG.	VERT. DEG.					
P-1	35'	P-1A	1	25'	10'	1	714.82	13+54	432'	
		P-1B	1	55'	10'	NL-1				
		P-1C	1	85'	10'	1				
		P-1D	1	115'	10'	1				
			2							OR-1
P-2	55'	P-2A	1	25'	10'	1	714.82	15+70	432'	
		P-2B	1	55'	10'	NL-1				
		P-2C	1	85'	10'	1				
		P-2D	1	115'	10'	1				
			2							OR-1
P-3	55'	P-3A	1	25'	10'	1	714.82	17+86	432'	
		P-3B	1	55'	10'	NL-1				
		P-3C	1	85'	10'	1				
		P-3D	1	115'	10'	1				
			2							OR-1

NOTES:

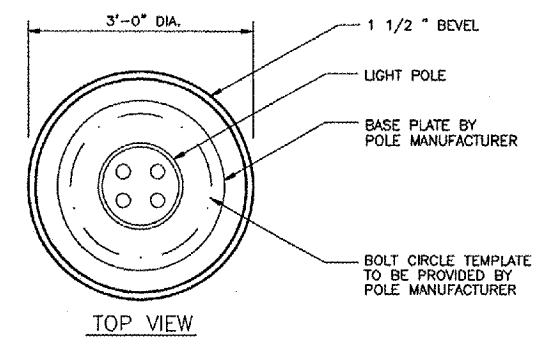
- APRON LIGHT FIXTURES SHALL BE MODEL NO. APL-22-F-HPS-1000-K-B2 AS MANUFACTURED BY QUALITY LIGHTING OR EQUAL.
- 55' APRON LIGHT POLES SHALL BE MODEL NO. RTSP-55-12-V1-AB-TEN30R5-OB1LED-BHS490 BY WHITCO POLES OR EQUAL.
- 35' APRON LIGHT POLE SHALL BE MODEL NO. RTSP-35-90-E2-AB-TEN30R5-OB1LED-BHS490 BY WHITCO POLES OR EQUAL.



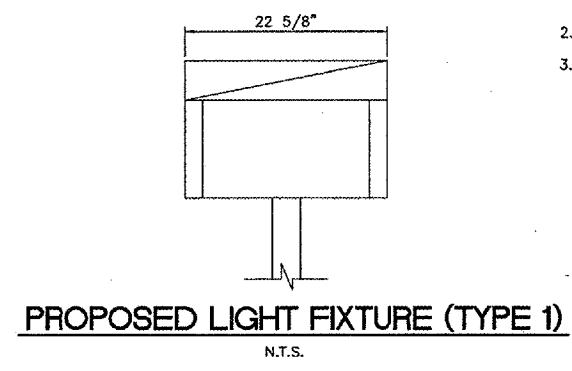
OBSTRUCTION LIGHT FIXTURE (TYPE 2)

LUMINAIRE REQUIREMENTS

- LUMINAIRE SHALL MEET FEDERAL AVIATION ADMINISTRATION SPECIFICATIONS FOR OBSTRUCTION LIGHTING (L-810).
- CAST ALUMINUM HOUSING.
- ONE PIECE 360° RED, HEAT RESISTANT GLASS FRESNEL GLOBE. PROVIDE TOGGLE TYPE LATCHES AND CLAMPING TO SECURE GLOBES. PROVIDE SAFETY CHAINS ON GLOBES.
- OBSTRUCTION LIGHT SHALL BE L.E.D. TYPE AS MANUFACTURED BY DIA-LIGHT OR EQUAL.
- PROVIDE INTERNAL PROVISIONS FOR GROUNDING.
- SEE ALSO SCHEDULE AND DETAILS SHEET.
- INSTALL OBSTRUCTION LIGHT AS RECOMMENDED BY APRON LIGHTING MANUFACTURER.



TOP VIEW



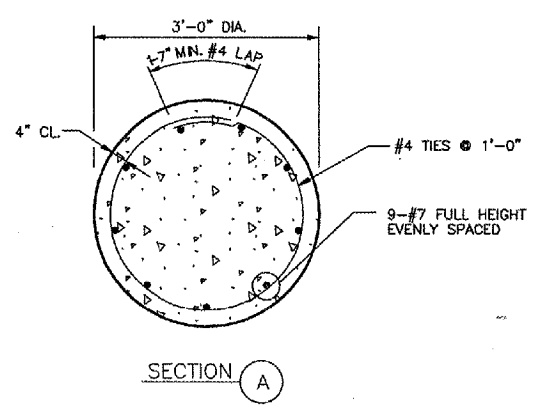
PROPOSED LIGHT FIXTURE (TYPE 1)

LIGHT POLE FOUNDATION NOTES

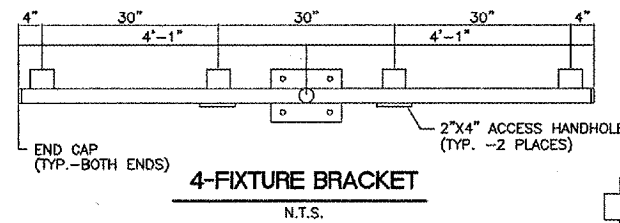
- FOUNDATION FOR LIGHT POLES SHALL BE BORED/DRILLED. EXISTING SITE SOILS ARE SANDS. CONSTRUCTION OF DRILLED LIGHT POLE FOUNDATIONS WILL REQUIRE THE USE OF A TEMPORARY CASING. PROJECT SOILS REPORT AVAILABLE UPON REQUEST.
- CONCRETE SHALL HAVE A MINIMUM COMPRESSIVE STRENGTH OF 4,000 P.S.I. AT 28 DAYS.
- ALL REINFORCING STEEL SHALL CONFORM TO ASTM A-615, GRADE 60.
- POLE FOUNDATION SHALL BE MONOLITHIC. NO CONSTRUCTION JOINTS WILL BE PERMITTED.

LIGHT POLE FOUNDATION DESIGN

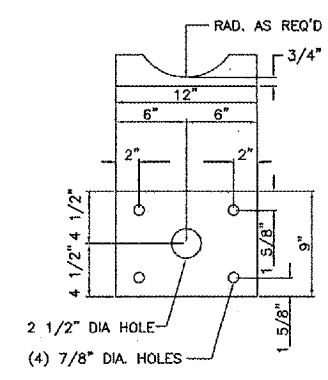
DESIGN LOAD: AASHTO-STANDARD SPECIFICATIONS FOR STRUCTURAL SUPPORTS FOR HIGHWAY SIGNS, LUMINAIRES AND TRAFFIC SIGNALS, 2001.
 DESIGN WIND SPEED = 100 MPH



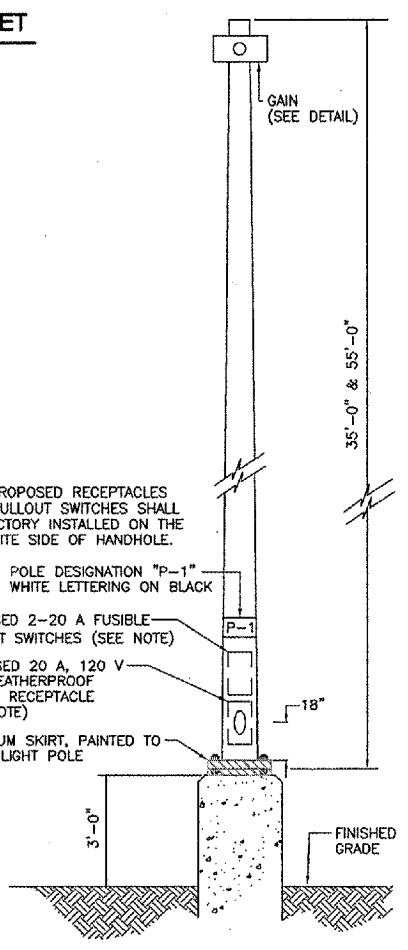
SECTION A



4-FIXTURE BRACKET



GAIN DETAIL

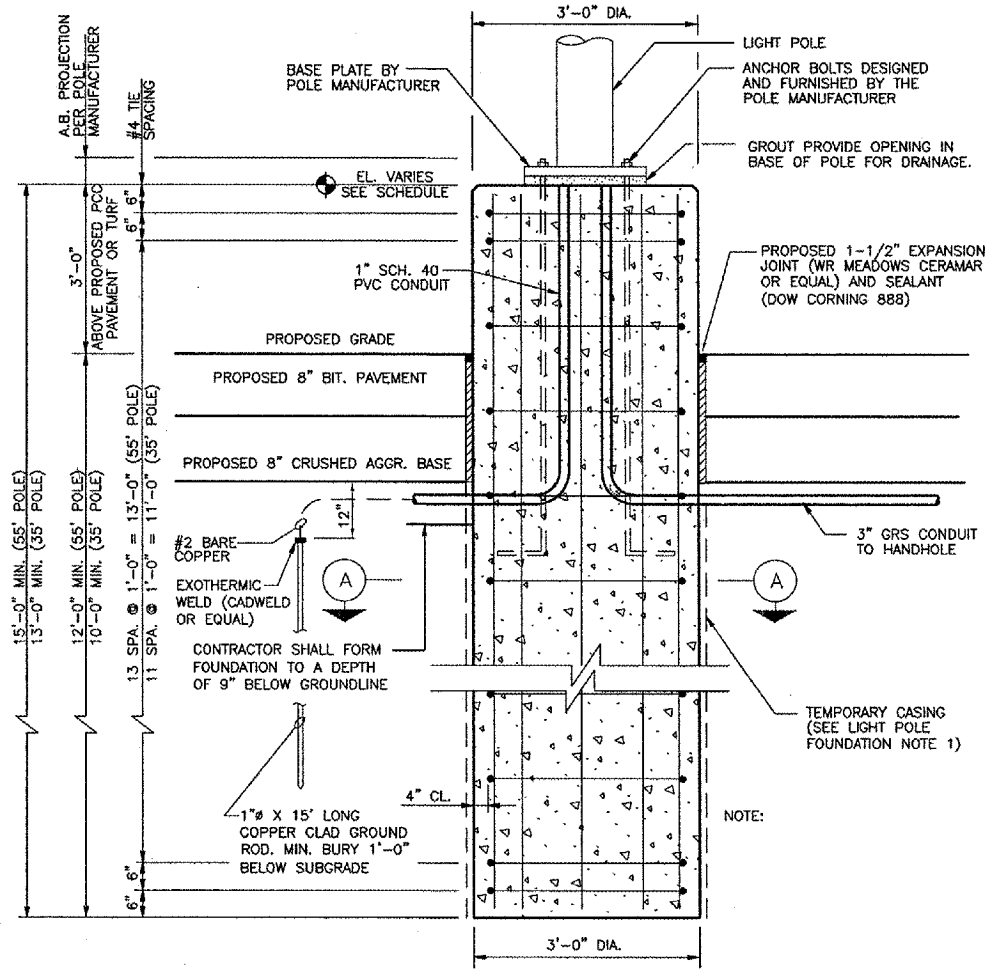


LIGHT POLE DETAIL

NOTE:

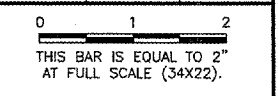
THE PROPOSED RECEPTACLES AND PULLOUT SWITCHES SHALL BE FACTORY INSTALLED ON THE OPPOSITE SIDE OF HANDHOLE.

- POLE DESIGNATION "P-1" WHITE LETTERING ON BLACK
- PROPOSED 2-20 A FUSIBLE PULLOUT SWITCHES (SEE NOTE)
- PROPOSED 20 A, 120 V GFCI WEATHERPROOF DUPLEX RECEPTACLE (SEE NOTE)
- ALUMINUM SKIRT, PAINTED TO MATCH LIGHT POLE



ELEVATION - LIGHT POLE FOUNDATION

REVISIONS		
NUMBER	BY	DATE



CHICAGO ROCKFORD INTERNATIONAL AIRPORT
ROCKFORD, ILLINOIS
APRON LIGHTING DETAILS

© Copyright CMT, Inc.

CMT
 CRAWFORD, MURPHY & TILLY, INC.
 CONSULTING ENGINEERS
 License No. 184-000813

Chicago Rockford International Airport

DESIGN BY:	AB
DRAWN BY:	JRO
CHECKED BY:	AB
APPROVED BY:	
DATE:	02/29/08
JOB No:	07258-06
ILLINOIS PROJECT:	RFD-3787
A.I.P. PROJECT:	3-17-0088-XX
FINAL SUBMITTAL	
SHEET 45 OF 83 SHEETS	