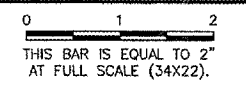


REVISIONS		
NUMBER	BY	DATE



CHICAGO ROCKFORD INTERNATIONAL AIRPORT
 ROCKFORD, ILLINOIS

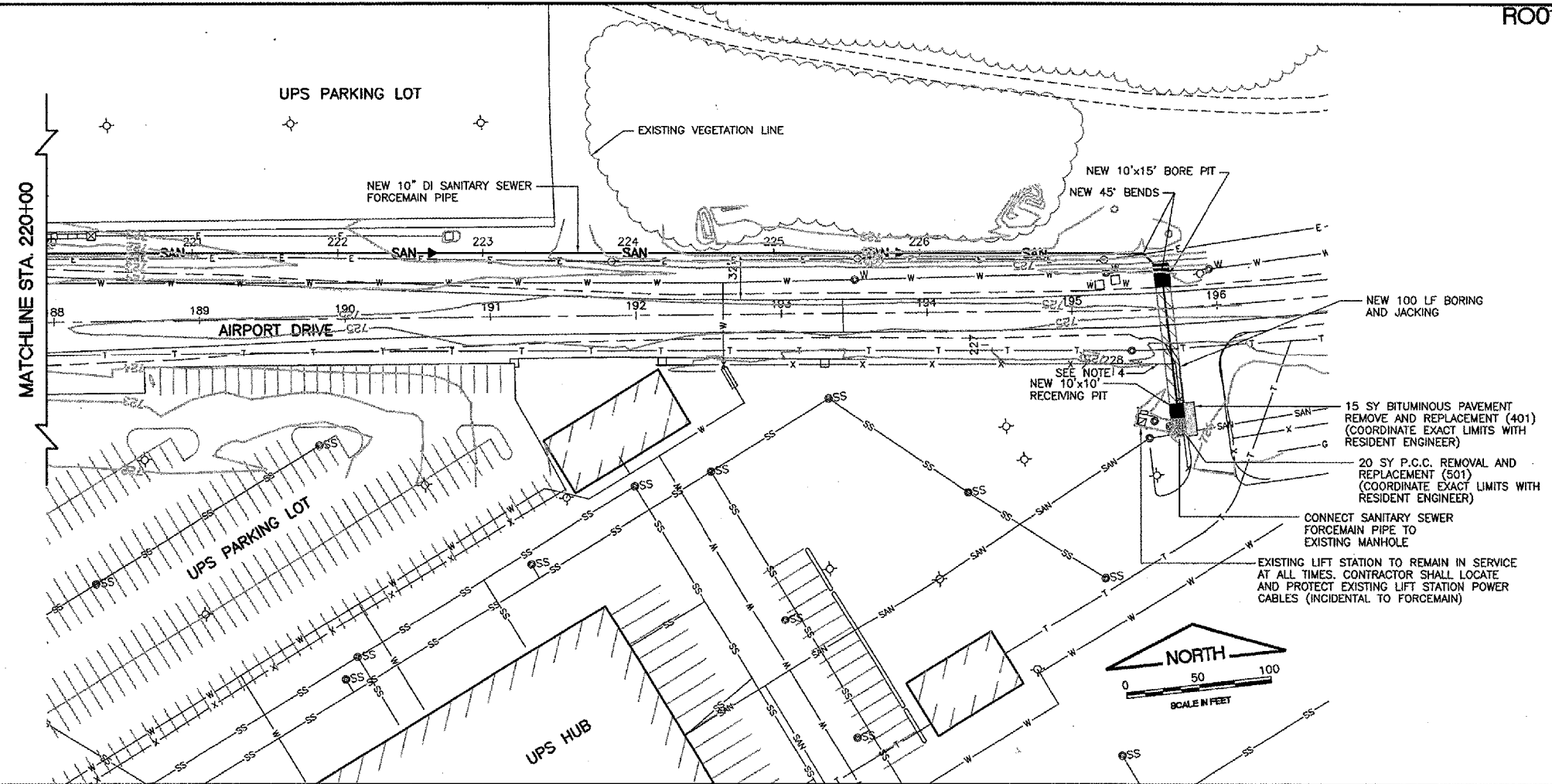
SANITARY PLAN AND PROFILE
 SHEET 3

© Copyright CMT, Inc.
CMT
 CRAWFORD, MURPHY & TILLY, INC.
 CONSULTING ENGINEERS
 License No. 184-000613

Chicago
 Rockford
 International
 Airport

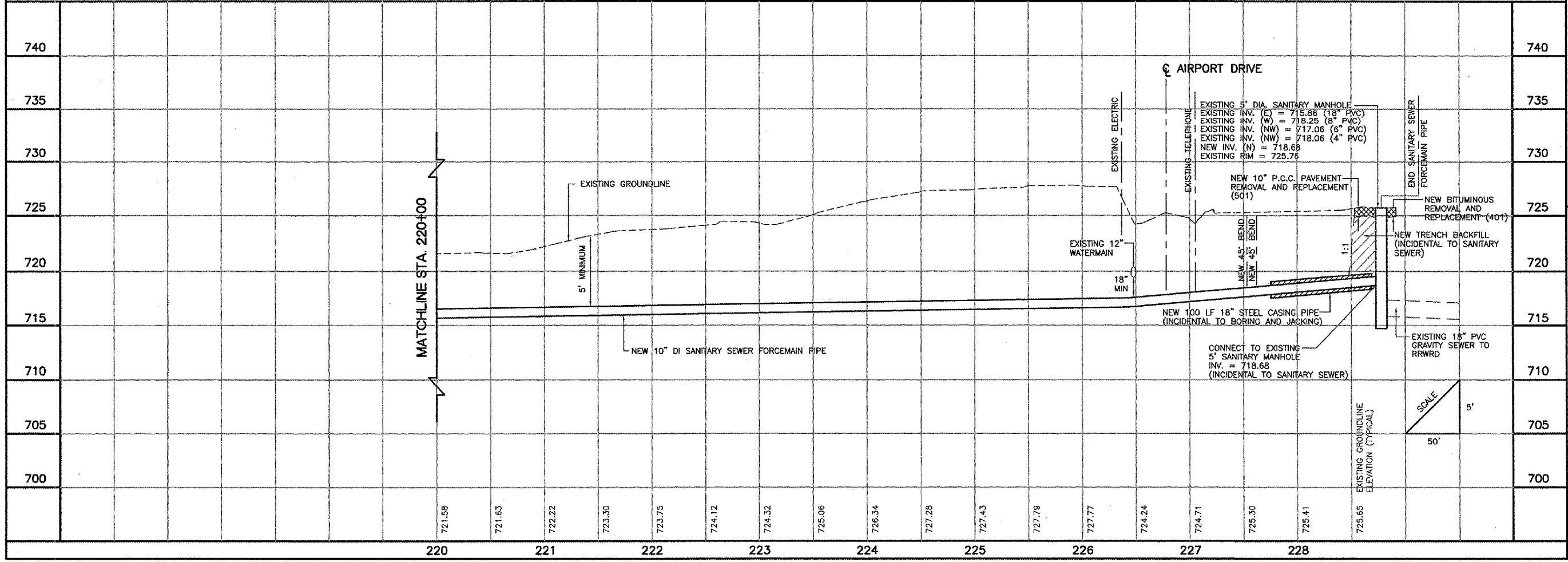
DESIGN BY:	CAL
DRAWN BY:	JRO
CHECKED BY:	CAL
APPROVED BY:	
DATE:	02/29/08

JOB No: 07258-06
 ILLINOIS PROJECT: RFD-3787
 A.I.P. PROJECT: 3-17-0088-XX
FINAL SUBMITTAL



THE INFORMATION SHOWN ON THESE PLANS HAS BEEN OBTAINED FROM AVAILABLE RECORDS. NEITHER THE OWNER NOR THE ENGINEER ASSUMES ANY RESPONSIBILITY WHATSOEVER IN RESPECT TO THE ACCURACY OR SUFFICIENCY OF THE INFORMATION AND THERE IS NO GUARANTEE EITHER EXPRESSED OR IMPLIED THAT THE CONDITIONS INDICATED ARE REPRESENTATIVE OF THOSE TO BE ENCOUNTERED IN THE FIELD. IT SHALL BE THE CONTRACTOR'S RESPONSIBILITY TO VISIT THE SITE AND ACQUAINT HIMSELF WITH THE EXISTING CONDITIONS.

FOR LEGEND AND NOTES
 SEE SHEET 69



DESIGN BY:	CAL
DRAWN BY:	JRO
CHECKED BY:	CAL
APPROVED BY:	
DATE:	02/29/08

JOB No: 07258-06
 ILLINOIS PROJECT: RFD-3787
 A.I.P. PROJECT: 3-17-0088-XX
FINAL SUBMITTAL