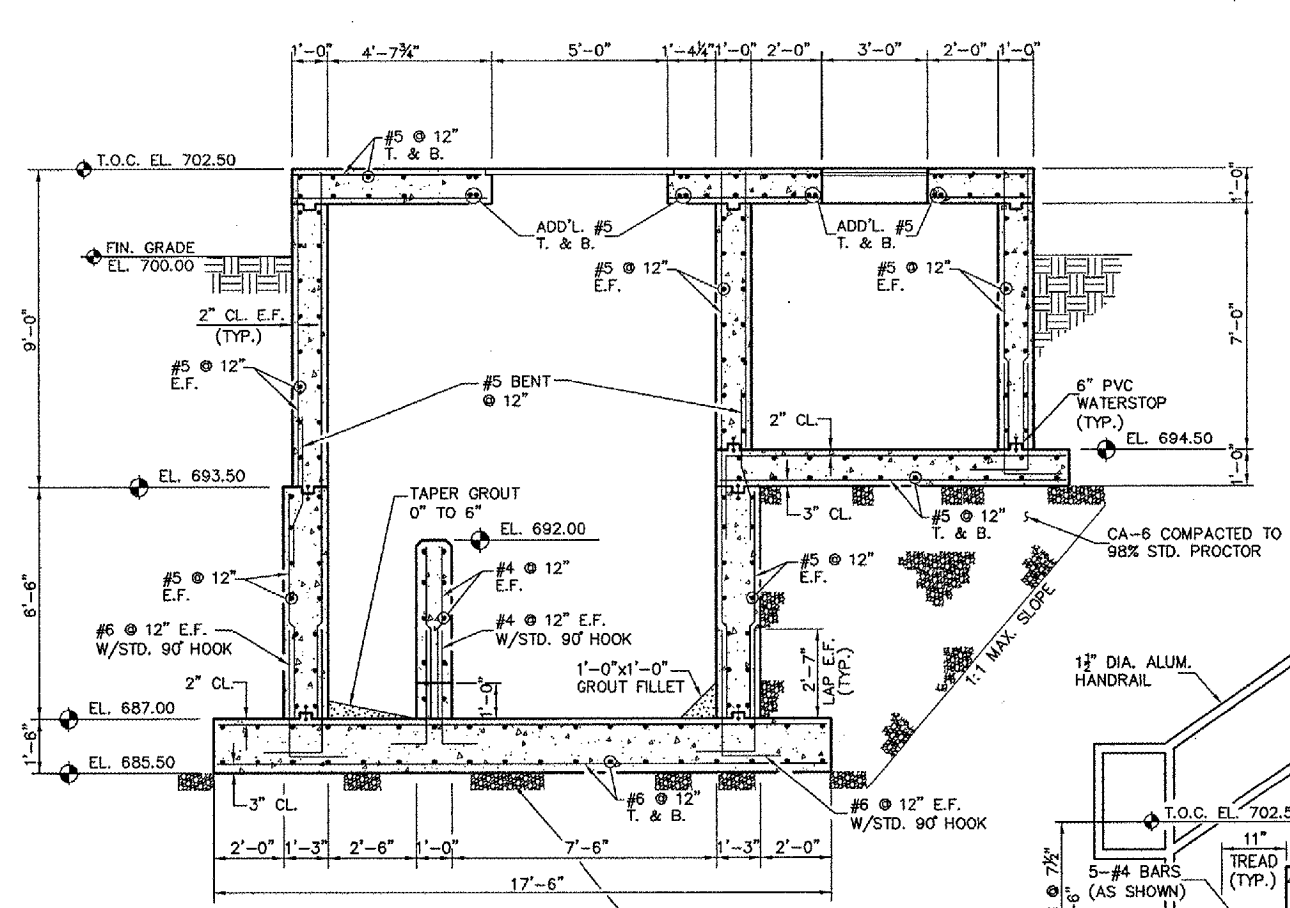


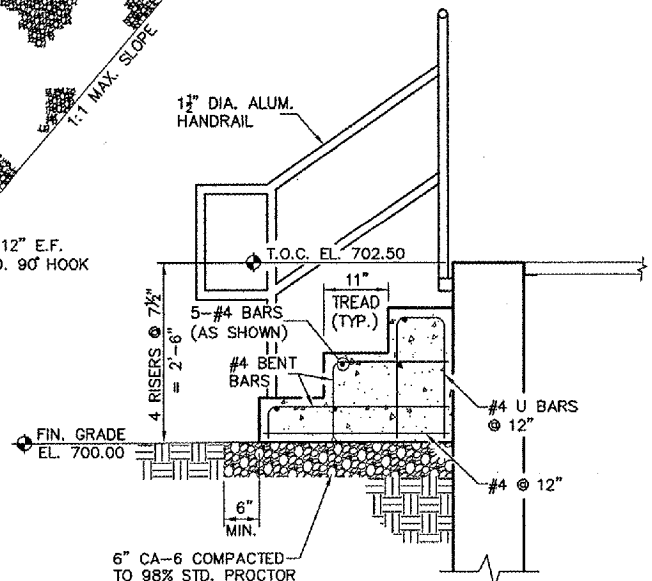
REVISIONS

NUMBER	BY	DATE

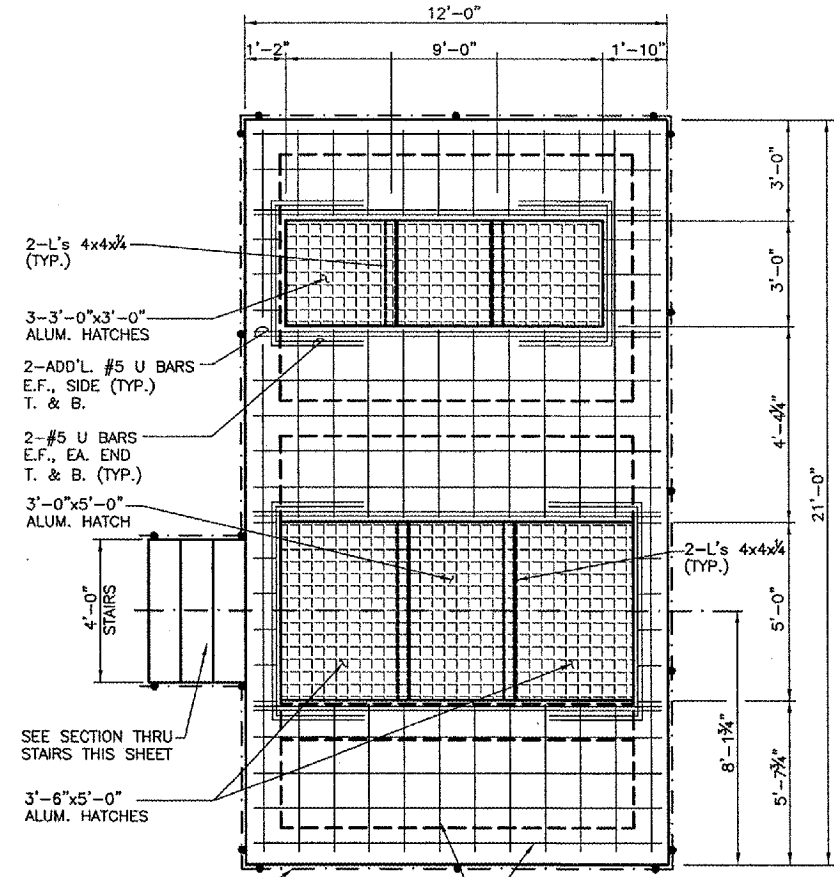
0 1 2
 THIS BAR IS EQUAL TO 2" AT FULL SCALE (34X22).



SECTION A
 3/8"=1'-0"

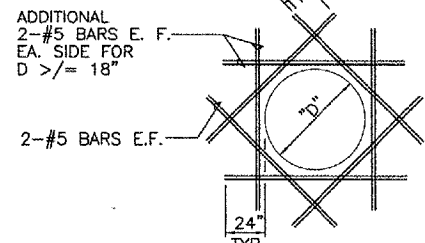


SECTION THRU STAIRS
 3/4"=1'-0"



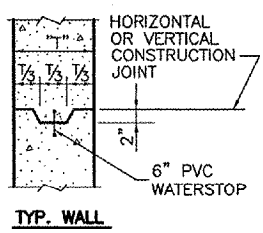
TOP SLAB PLAN
 3/8"=1'-0"

- NOTES:
- SEE SPECIFICATIONS SEC 05500 FOR ACCESS HATCH REQUIREMENTS.
 - SEE SPECIFICATIONS SEC 05520 FOR HANDRAIL REQUIREMENTS.

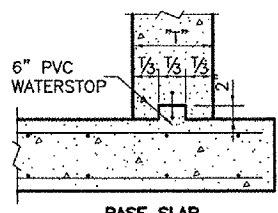


TYPICAL ADDITIONAL REINFORCEMENT AROUND PIPE PENETRATIONS

* NO ADDITIONAL REINFORCEMENT NEEDED FOR PIPE PENETRATIONS LESS THAN 4".

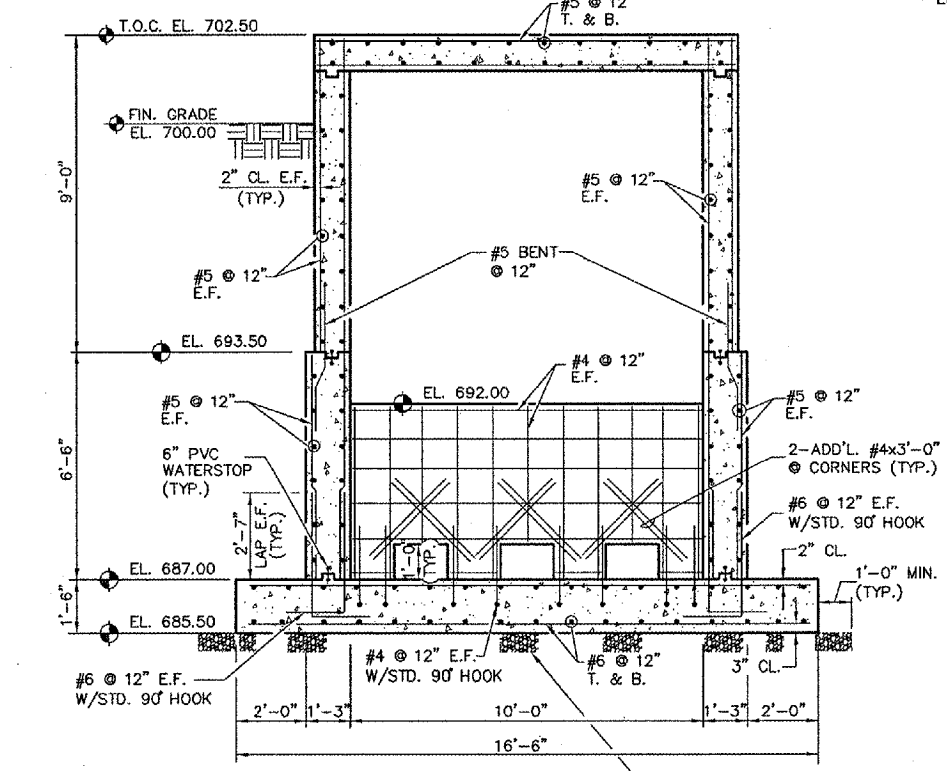


TYP. WALL

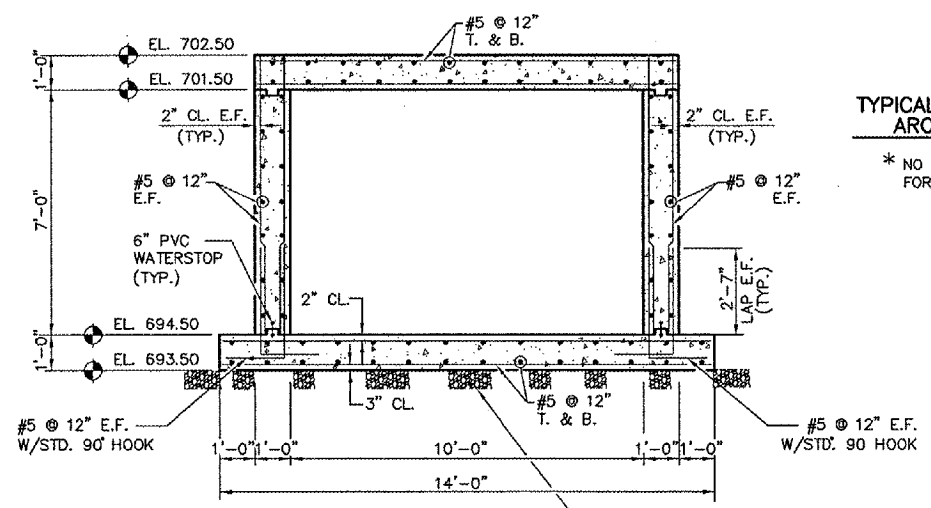


BASE SLAB

KEYWAY DETAILS



SECTION B
 3/8"=1'-0"



SECTION C
 3/8"=1'-0"

CHICAGO ROCKFORD INTERNATIONAL AIRPORT
 ROCKFORD, ILLINOIS

SANITARY LIFT STATION
 STRUCTURAL DETAILS - SHEET 2

Copyright CMT, Inc.
CMT
 CRAWFORD, MURPHY & TILLY, INC.
 CONSULTING ENGINEERS
 License No. 84-00813
 Chicago Rockford International Airport

DESIGN BY:	CMT SPI
DRAWN BY:	JRO
CHECKED BY:	CAL
APPROVED BY:	
DATE:	02/29/08
JOB No:	07258-06
ILLINOIS PROJECT:	RFD-3787
A.I.P. PROJECT:	3-17-0088-XX
FINAL SUBMITTAL	
SHEET	75 OF 83 SHEETS