

IMAGE FILES: RFD Airport intl logo.JPG

REVISIONS		
NUMBER	BY	DATE

0 1 2
 THIS BAR IS EQUAL TO 2" AT FULL SCALE (34X22).

CHICAGO ROCKFORD INTERNATIONAL AIRPORT
 ROCKFORD, ILLINOIS

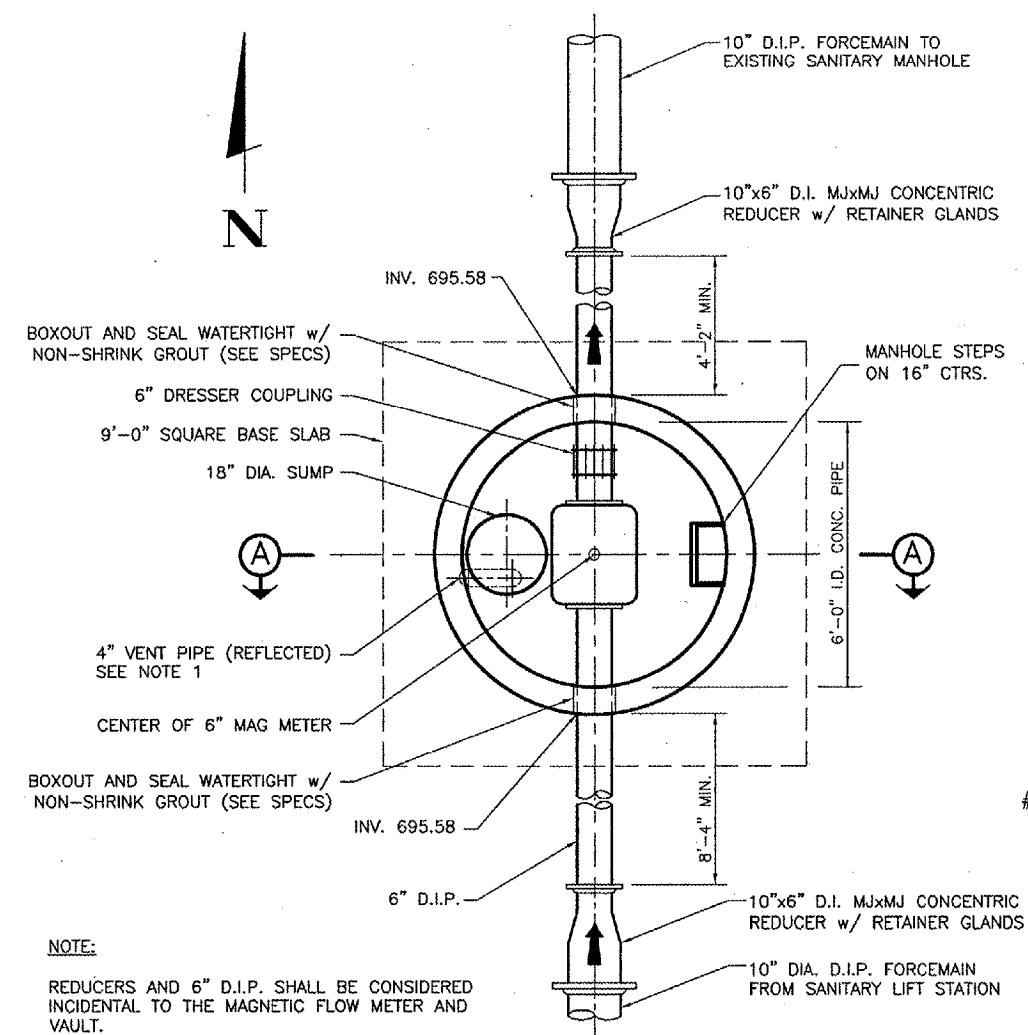
MAG METER AND AIR RELEASE VALVE DETAILS

© Copyright CMT, Inc.

CMT
 CRAWFORD, MURPHY & TILLY, INC.
 CONSULTING ENGINEERS
 License No. 184-000613

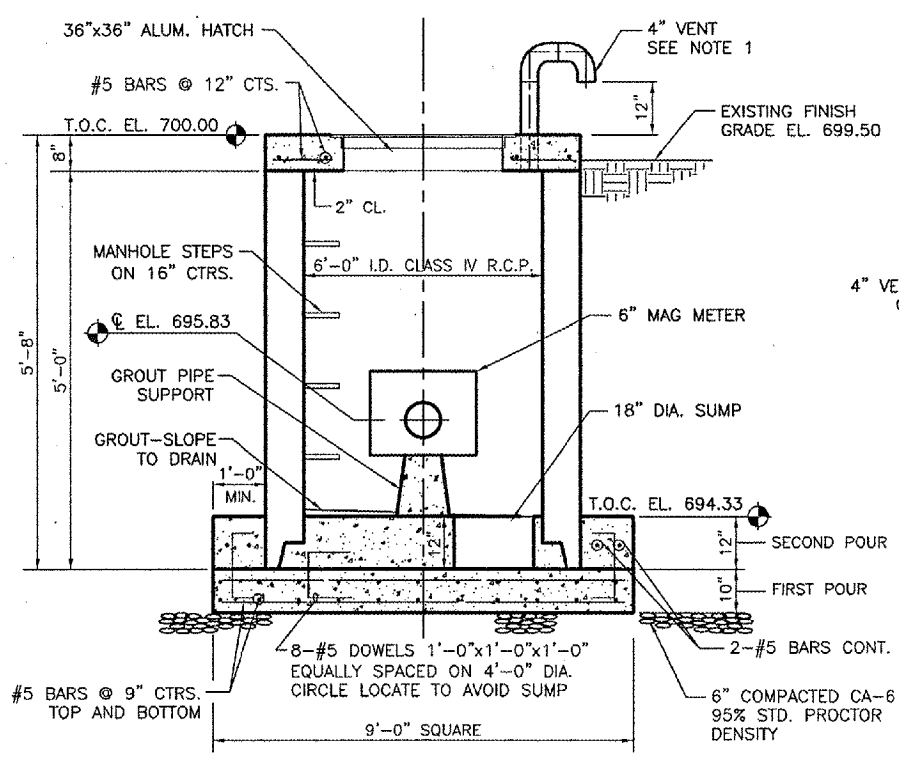
Chicago Rockford International Airport

DESIGN BY:	CAD
DRAWN BY:	CAD
CHECKED BY:	CAL
APPROVED BY:	
DATE:	02/29/08
JOB No:	07258-06
ILLINOIS PROJECT:	RFD-3787
A.I.P. PROJECT:	3-17-0088-XX
FINAL SUBMITTAL	
SHEET	79 OF 83 SHEETS



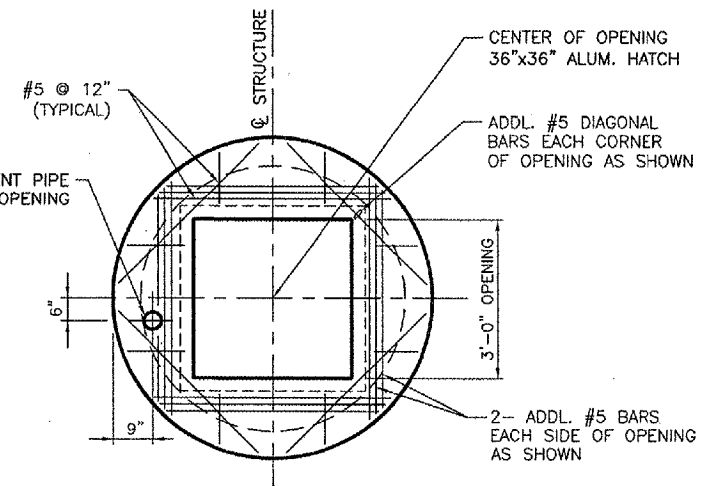
PLAN VIEW
 N.T.S.

NOTE:
 REDUCERS AND 6" D.I.P. SHALL BE CONSIDERED INCIDENTAL TO THE MAGNETIC FLOW METER AND VAULT.



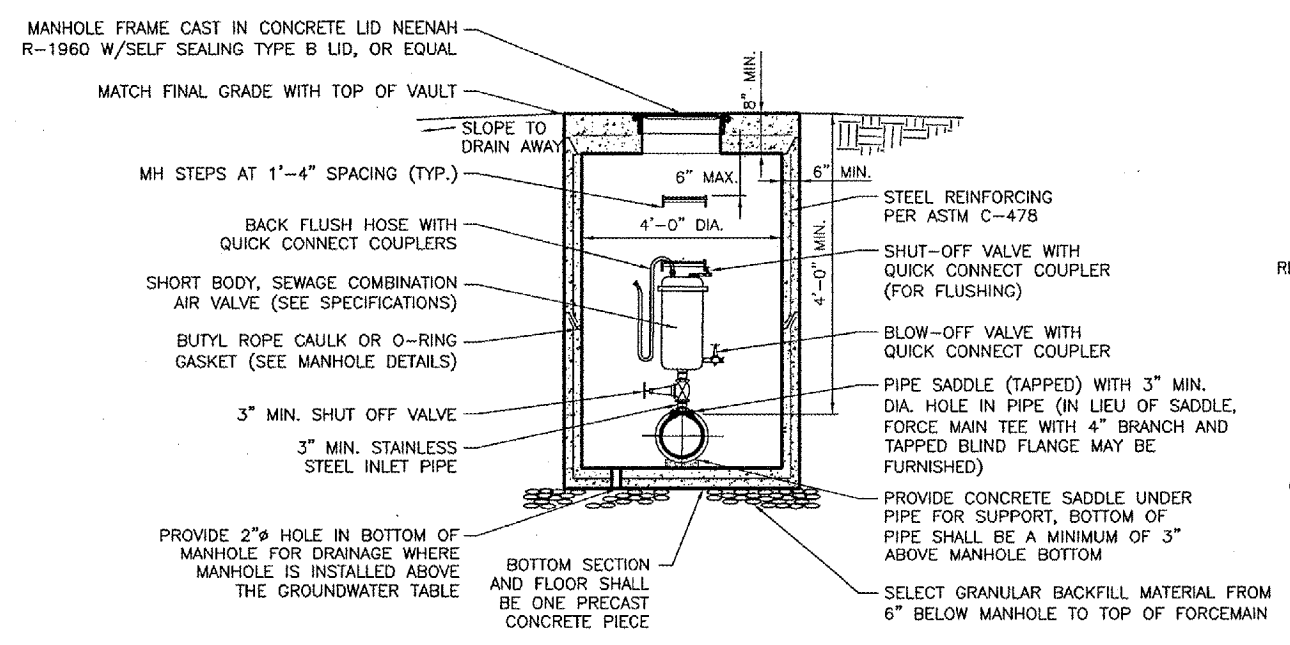
SECTION A
 N.T.S.

SANITARY LIFT STATION MAG METER VAULT
 N.T.S.

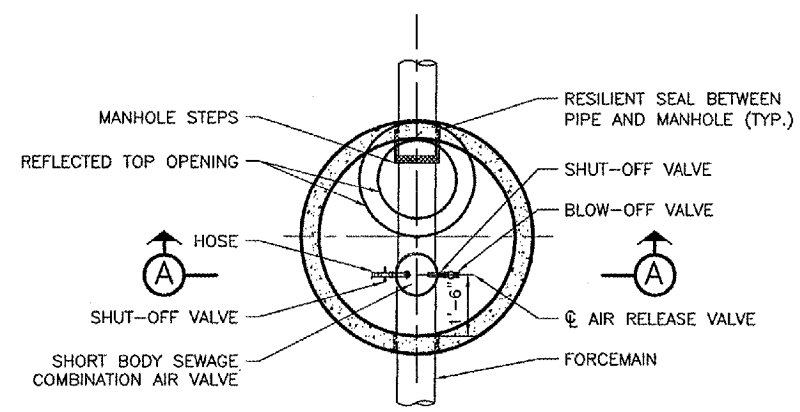


TOP SLAB PLAN
 N.T.S.

- MAGNETIC FLOWMETER VAULT NOTES:**
1. PROVIDE STAINLESS STEEL 10 MESH SCREEN ON END OF VENT. ATTACH WITH STAINLESS STEEL PIPE CLAMP. VENT SHALL BE SCHEDULE 40 GALVANIZED STEEL.
 2. MAG METER SHALL BE SUBMERSIBLE.



SECTION A
 N.T.S.



PLAN VIEW
 N.T.S.

SANITARY FORCE MAIN AIR RELEASE VALVE AND VAULT DETAILS
 N.T.S.

- AIR VALVE NOTES:**
1. VAULT MANHOLE AND FORCE MAIN SHALL BE INSTALLED AT THE SAME TIME.
 2. COMBINATION AIR VALVES SHALL BE PROVIDED AT THE APPROXIMATE LOCATIONS SHOWN TO LIMIT AIR ENTRAPMENT. SUCH VALVES SHALL BE LOCATED AT THE HIGH POINT(S) IN THE FORCE MAIN (TO BE LOCATED IN THE FIELD).