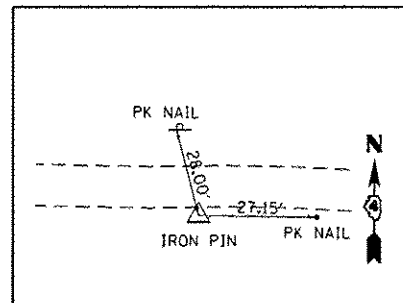
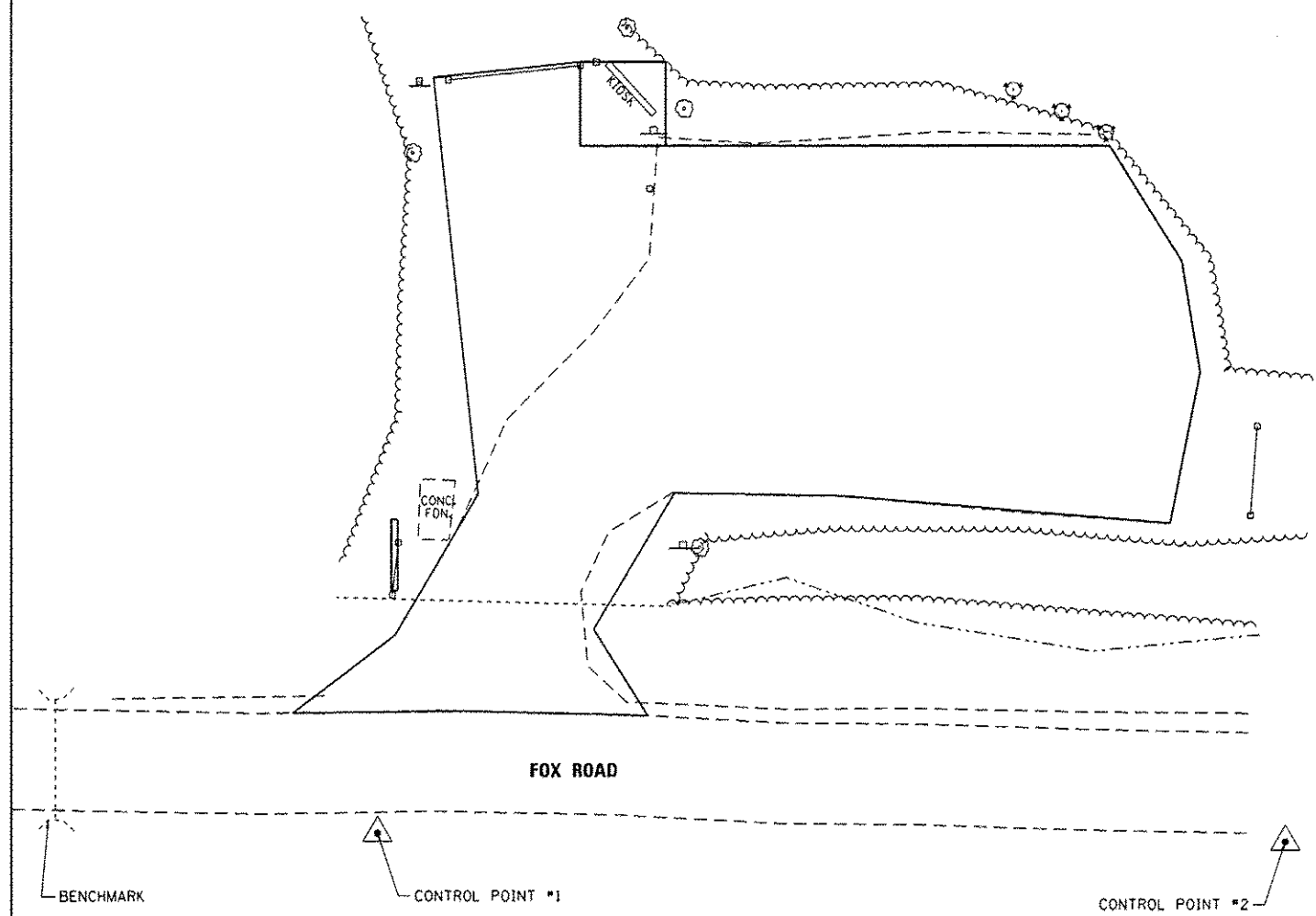
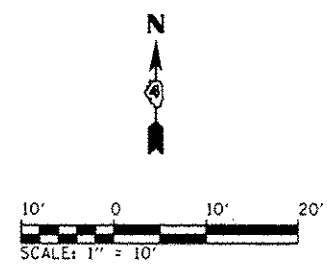


**CONTROL POINT #1**  
 N=1515716.097 E=2437526.797  
 ELEV=669.93

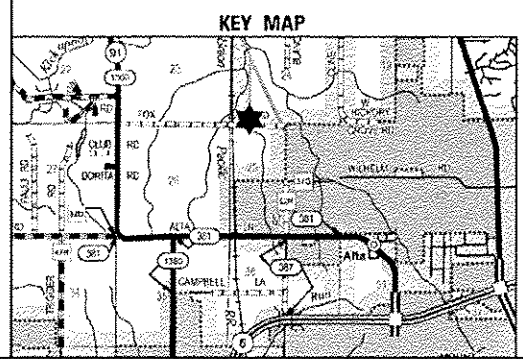
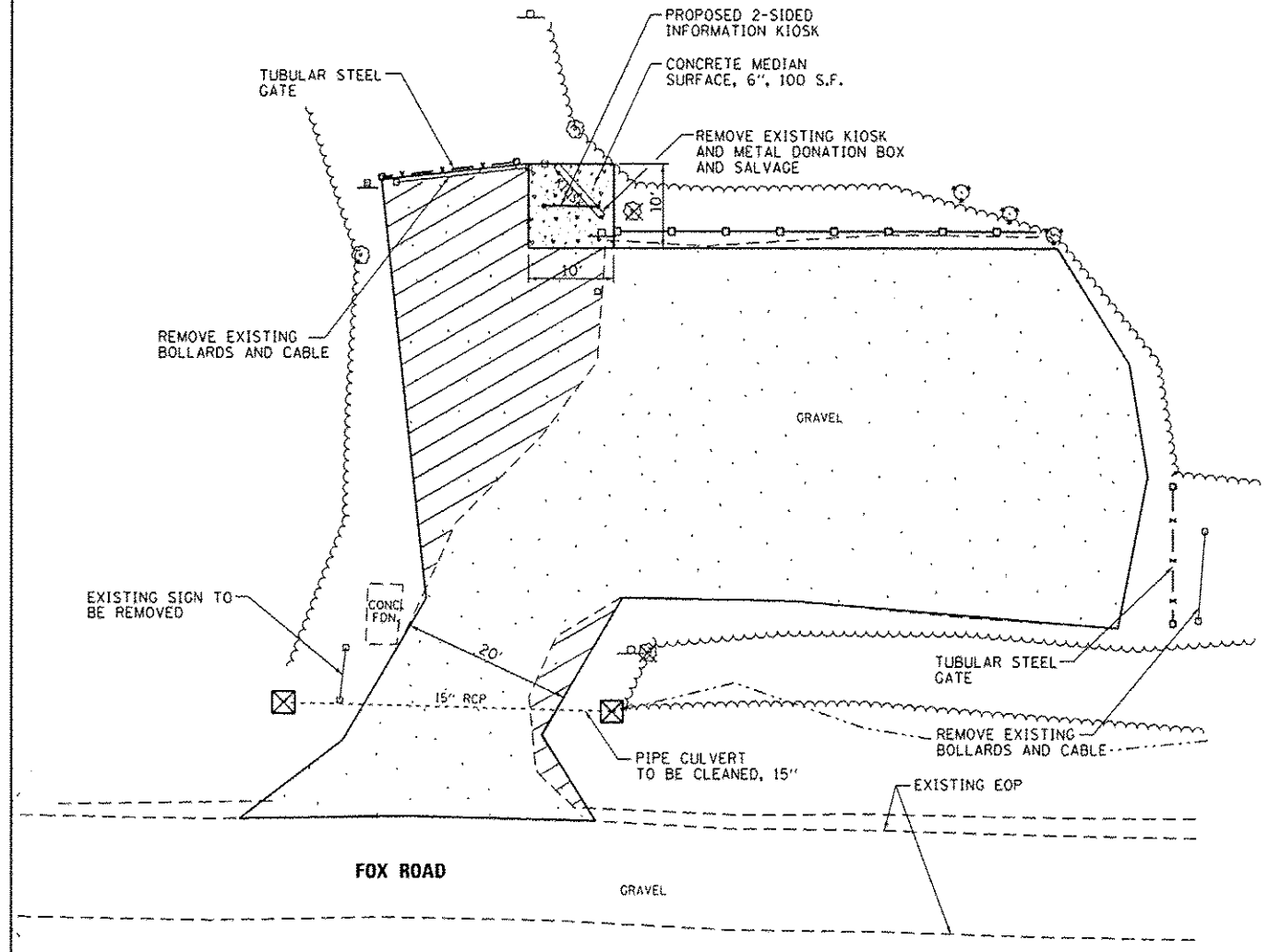
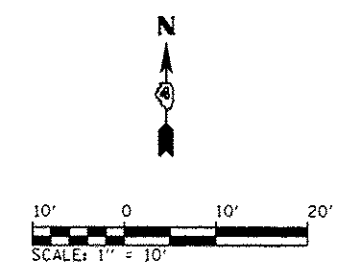


**CONTROL POINT #2**  
 N=1515712.806 E=2437723.799  
 ELEV=671.67



**BENCHMARK:**  
 CHISELED "C" ON N.W. CORNER OF BOX  
 CULVERT ON SOUTH SIDE OF FOX ROAD.  
 ELEVATION = 668.63

- NOTES:**
1. ALL EXISTING WOODEN BOLLARDS AND PARKING BUMPERS WITHIN LIMITS OF PROPOSED IMPROVEMENTS SHALL BE REMOVED.
  2. ALL OTHER EXISTING ITEMS, SUCH AS BUT NOT LIMITED TO SIGNS, BENCHES, ETC. NOT MARKED FOR REMOVAL SHALL REMAIN.



- PROPOSED LEGEND**
- AGGREGATE BASE COURSE FOR WIDENING, 8"
  - CONCRETE MEDIAN SURFACE, 6"
  - BITUMINOUS SURFACE TREATMENT (A-2)
  - WOOD BOLLARDS & CABLE
  - TREE REMOVAL
  - INLET AND PIPE PROTECTION

FILE NAME *	USER NAME * Kristin Timmons	DESIGNED - KLT	REVISED -
L:\1001\1186610\W0_8\0-a\CAD00_Sheets\Site_BM_Site Plan-Kickapoo.dgn		DRAWN - GLD	REVISED -
Default		CHECKED - SPH	REVISED -
		DATE - 2/1/2013	REVISED -

**STATE OF ILLINOIS**  
**DEPARTMENT OF TRANSPORTATION**

**SURVEY CONTROL, TIES AND BENCHMARKS / SITE PLAN**  
**KICKAPOO CREEK**  
**ROCK ISLAND TRAIL STATE PARK**

F.A. RTE.	SECTION	COUNTY	TOTAL SHEETS	SHEET NO.
	PARK ROADS	PEORIA/STARK	37	16
			CONTRACT NO. 46256	
			ILLINOIS FED. AID PROJECT	

SCALE: 1" = 10' SHEET OF SHEETS STA. TO STA.