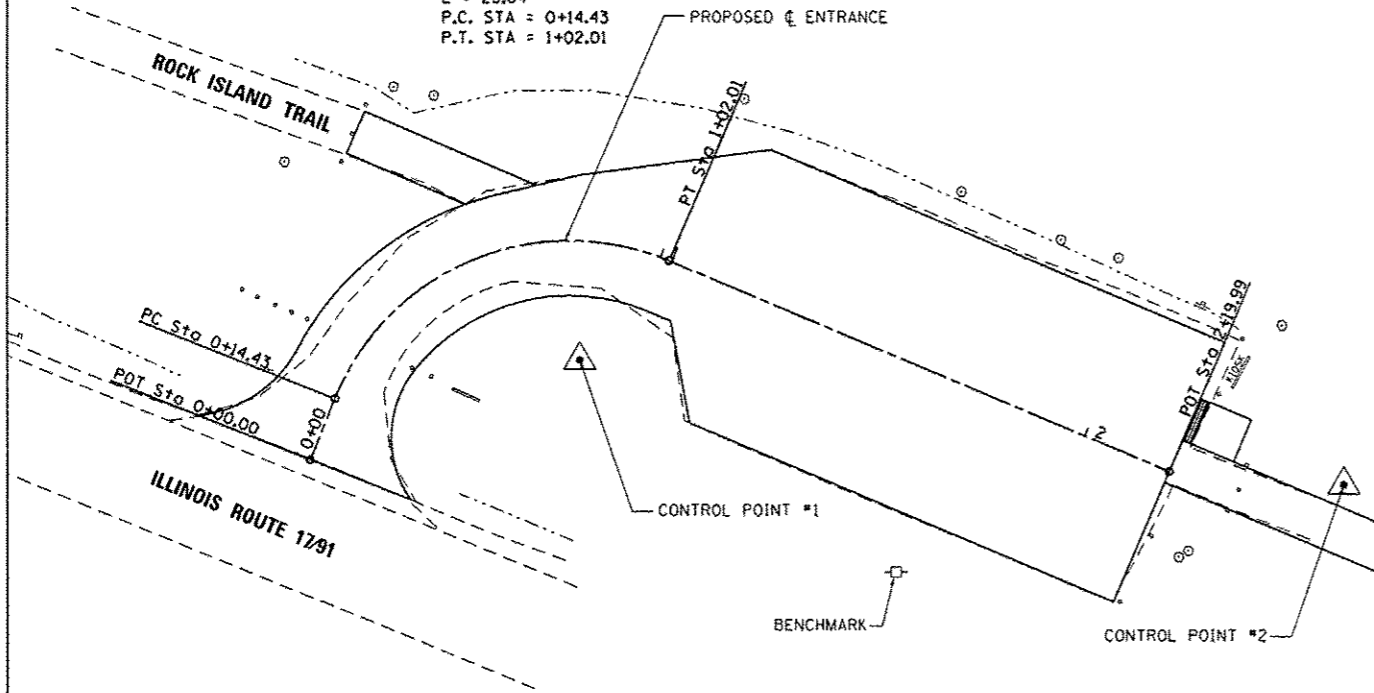


PROPOSED CURVE DATA
 PI STA. = 0+70.63
 $\Delta = 91^\circ 14' 15''$ (RT)
 $D = 104^\circ 10' 27''$
 $R = 55.00'$
 $T = 56.20'$
 $L = 87.58'$
 $E = 23.64'$
 P.C. STA = 0+14.43
 P.T. STA = 1+02.01

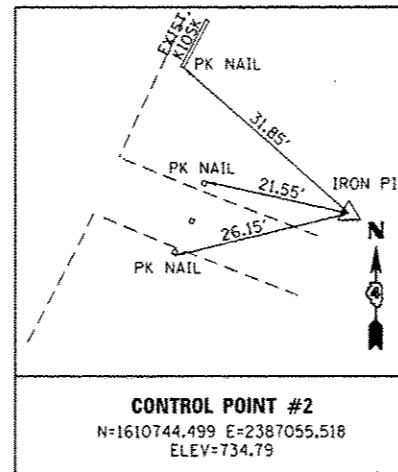
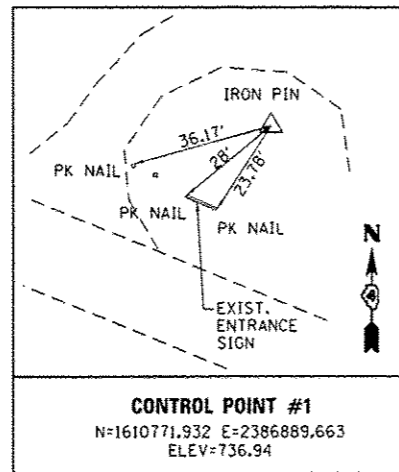


ALIGNMENT COORDINATE DATA

POT STA. = 0+00.00	P.T. STA. = 1+02.01
N: 1610750.071	N: 1610793.642
E: 2386831.077	E: 2386909.037
P.C. STA. = 0+14.43	P.I. STA. = 2+19.99
N: 1610763.470	N: 1610747.449
E: 2386836.440	E: 2387017.592

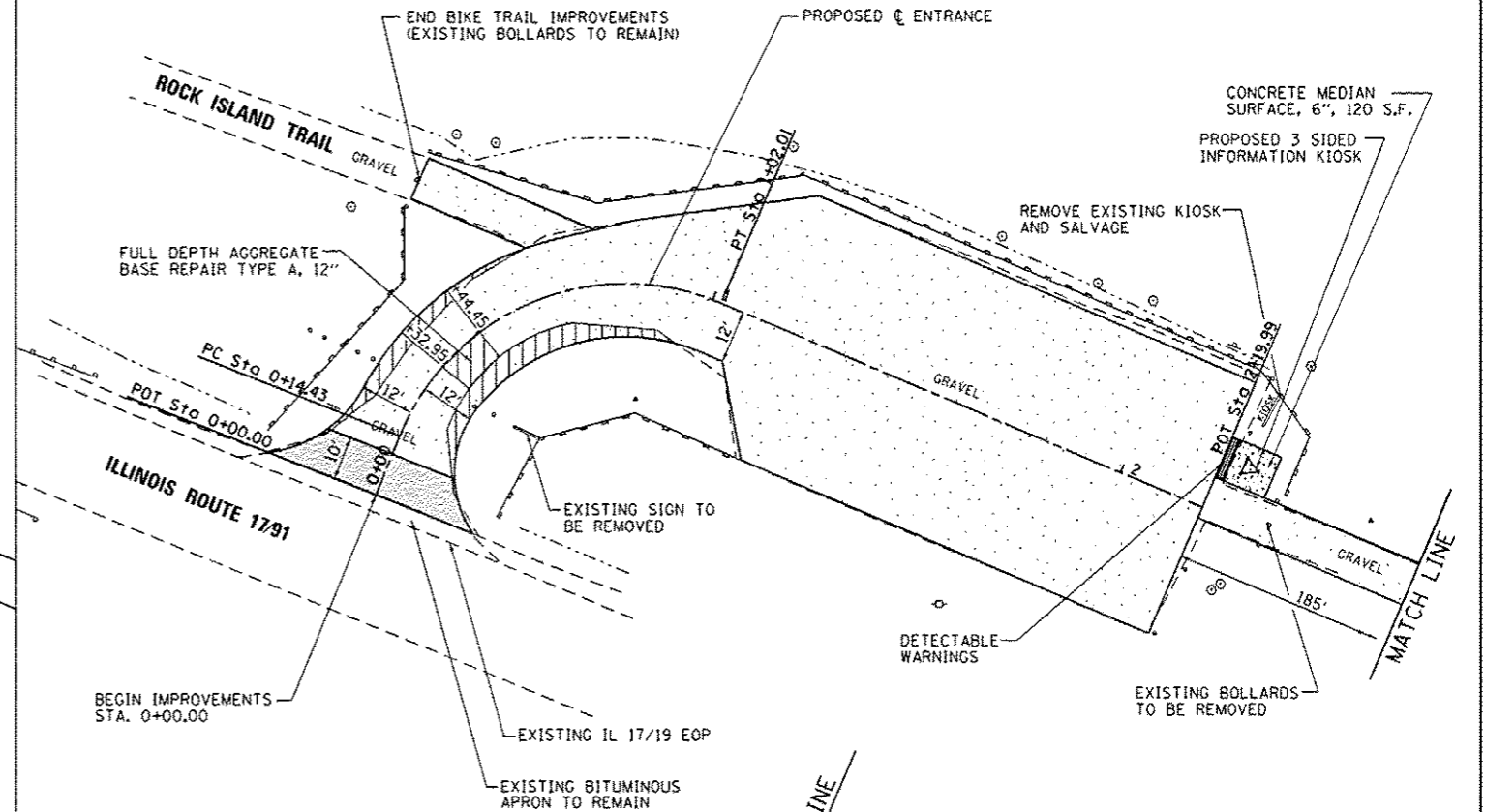
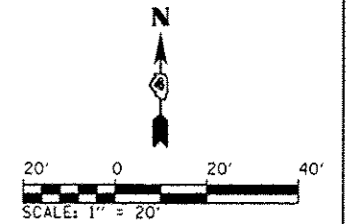
BENCHMARK:

60D SPIKE ON EAST FACE OF POWER POLE
 LOCATED SOUTH OF PARKING LOT.
 ELEVATION = 737.48

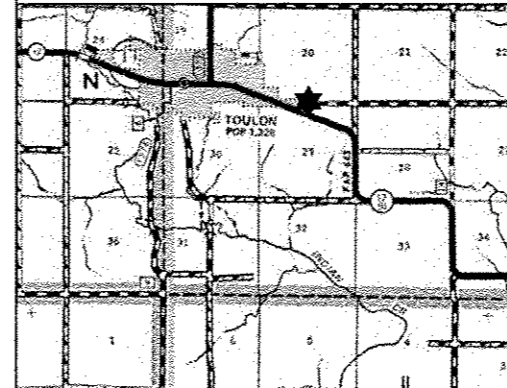


NOTES:

1. ALL EXISTING WOODEN BOLLARDS AND PARKING BUMPERS WITHIN LIMITS OF PROPOSED IMPROVEMENTS SHALL BE REMOVED.
2. ALL OTHER EXISTING ITEMS, SUCH AS BUT NOT LIMITED TO SIGNS, BENCHES, ETC. NOT MARKED FOR REMOVAL SHALL REMAIN.
3. NEW PARKING BLOCKS TO BE INSTALLED AT ALL PARKING SPACES.
4. PROPOSED BITUMINOUS SURFACE TREATMENT FOR BIKE TRAIL SHALL EXTEND FROM PARKING LOT THRU EXISTING SIDEWALK AT RESTROOMS OR AS DIRECTED BY THE ENGINEER.



KEY MAP



PROPOSED LEGEND

- | | | | |
|--|---|--|------------------------------------|
| | AGGREGATE BASE COURSE FOR WIDENING AND BASE REPAIR, 6" | | BITUMINOUS SURFACE TREATMENT (A-2) |
| | HOT-MIX ASPHALT SURFACE, 2" & HOT-MIX ASPHALT BINDER, 2" WITH AGGREGATE BASE COURSE, 8" | | DETECTABLE WARNINGS |
| | PERIMETER EROSION BARRIER | | CONCRETE MEDIAN SURFACE, 6" |

FILE NAME : L:\1007\1186618\W.D\Draw\CADD_Sheets\Site_BH_SitePlan-Toulon.dgn	USER NAME : Kristin Timmons	DESIGNED - KLT	REVISED -	STATE OF ILLINOIS DEPARTMENT OF TRANSPORTATION	SURVEY CONTROL, TIES AND BENCHMARKS / SITE PLAN TOULON TRAIL HEAD ROCK ISLAND TRAIL STATE PARK			F.A. RTE.	SECTION	COUNTY	TOTAL SHEETS	SHEET NO.	
Default	PLOT SCALE : 48.0000' / in.	DRAWN - GLD	REVISED -		SCALE: 1" = 20'	SHEET	OF	SHEETS	STA.	TO STA.	PEORIA/STARV	37	26
	PLOT DATE : 2/5/2013	CHECKED - SPH	REVISED -								CONTRACT NO. 46256		
		DATE - 2/11/2013	REVISED -								ILLINOIS FED. AID PROJECT		