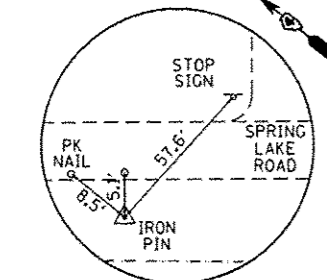
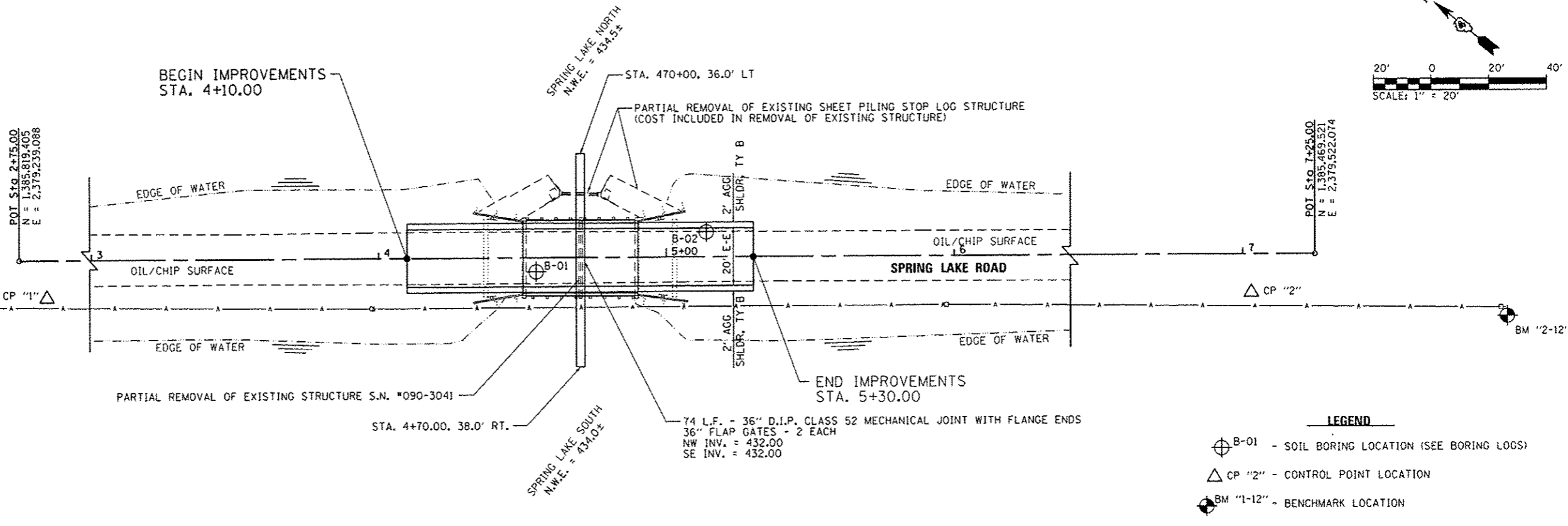
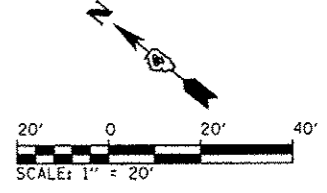


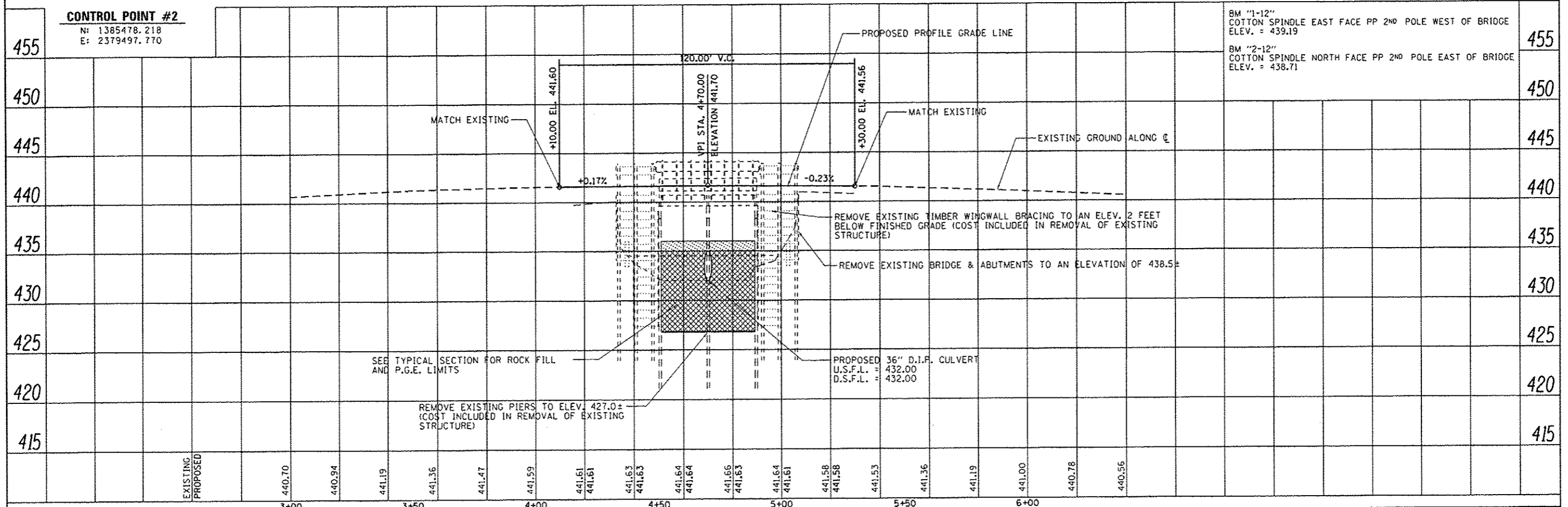
**CONTROL POINT #1**  
 N: 1385803.653  
 E: 2379234.848



**CONTROL POINT #2**  
 N: 1385478.218  
 E: 2379497.770



- LEGEND**
- B-01 - SOIL BORING LOCATION (SEE BORING LOGS)
  - CP "2" - CONTROL POINT LOCATION
  - BM "1-12" - BENCHMARK LOCATION



FILE NAME: L:\1001\11866\B\W\14\Draw\CADD_Sheets\00				USER NAME: Jim Michael				DESIGNED: C/JW				REVISED:				STATE OF ILLINOIS DEPARTMENT OF TRANSPORTATION				PLAN AND PROFILE SPRING LAKE STATE PARK				F.A. RTE. 459		SECTION PARK ROADS		COUNTY TAZEWELL		TOTAL SHEETS 10		SHEET NO. 4	
DRAWN: RAH				CHECKED: JMM				DATE: FEBRUARY 2013				SCALE: SHEET OF SHEETS STA. 4+10.00 TO STA. 5+15.20				CONTRACT NO.				ILLINOIS FED. AID PROJECT													

DATE	
BY	
REVISIONS	
NO.	
DESCRIPTION	
DATE	
BY	

DATE	
BY	
REVISIONS	
NO.	
DESCRIPTION	
DATE	
BY	