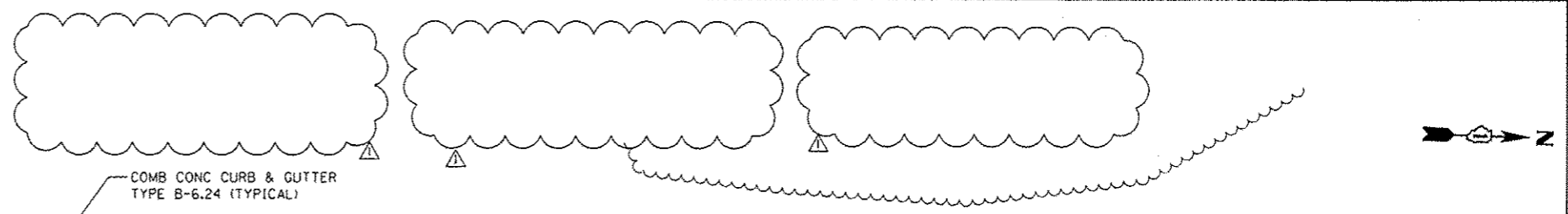


**NOTE:**  
 PARKING LOT PAVEMENT RESTORATION SHALL CONSIST OF MATCHING THE EXISTING PAVEMENT STRUCTURE. ESTIMATED QUANTITIES CONSIST OF:  
 HMA SURFACE COURSE, MIX D, NSO (1 1/2" THICK)  
 HMA BINDER COURSE, IL-19.0, NSO (2 1/4" THICK)  
 AGGREGATE BASE COURSE, TYPE B, 8"

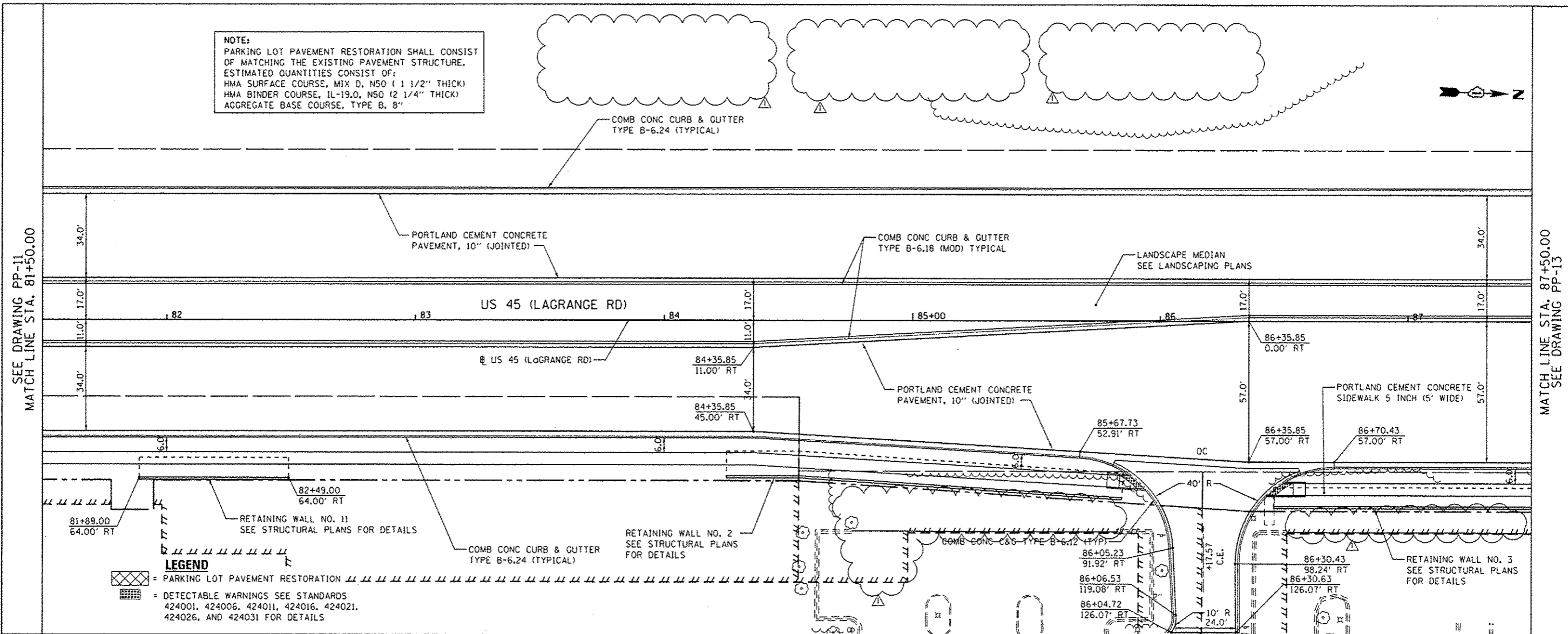


DATE	
BY	
REVISIONS	
NO.	DESCRIPTION
1	AS SHOWN CHECKED
2	ADD FILE MARK
PLAN	
NOTE BOOK	
NO.	

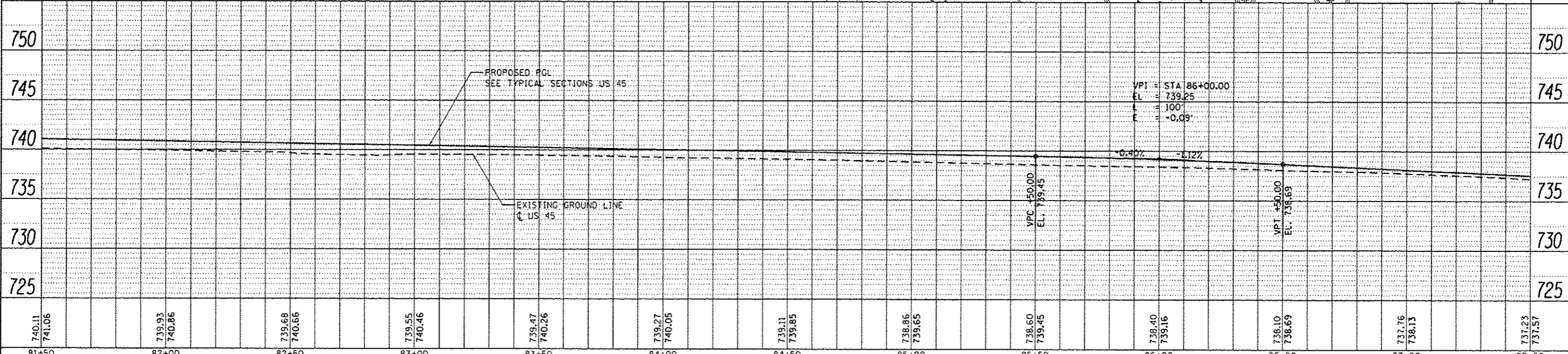
DATE	
BY	
REVISIONS	
NO.	DESCRIPTION
1	AS SHOWN CHECKED
2	STRUCTURE NOTING CHG
PROFILE	
NOTE BOOK	
NO.	

SEE DRAWING PP-11  
 MATCH LINE STA. 81+50.00

MATCH LINE STA. 87+50.00  
 SEE DRAWING PP-13



**LEGEND**  
 [Symbol] = PARKING LOT PAVEMENT RESTORATION  
 [Symbol] = DETECTABLE WARNINGS SEE STANDARDS 424001, 424006, 424011, 424016, 424021, 424026, AND 424031 FOR DETAILS



**URS**  
 100 S. WACKER DR.  
 SUITE 500  
 CHICAGO, IL 60606  
 TEL: (312) 866-0000  
 FAX: (312) 939-1199

FILE NAME: D:\60F05-SHT-PLNPROF12.dgn	USER NAME: jones.push	DESIGNED - JTF	REVISED - 04/12/2013	<b>STATE OF ILLINOIS DEPARTMENT OF TRANSPORTATION</b>	<b>PROPOSED PLAN AND PROFILE - US 45 (LAGRANGE ROAD)</b>	F.A.P. RITE. 330	SECTION 103R-3	COUNTY COOK	TOTAL SHEETS 932	SHEET NO. 81	
PLT SCALE = 40.0000 / 1"	CHECKED - MJT	REVISED -	SCALE: 1"=20'H=1'=5'4"			SHEET 12 OF 26 SHEETS	STA. 81+50.00 TO STA. 87+50.00	<b>PP-12</b>		CONTRACT NO. 60F05	
PLT DATE = 4/18/2013	DATE - 03/13/13	REVISED -				ILLINOIS FED. AID PROJECT					
SHT_PLNPROF_URBAN											