

LEGEND

- = PARKING LOT PAVEMENT RESTORATION
- = DETECTABLE WARNINGS SEE STANDARDS 424001, 424006, 424011, 424016, 424021, 424026, AND 424031 FOR DETAILS

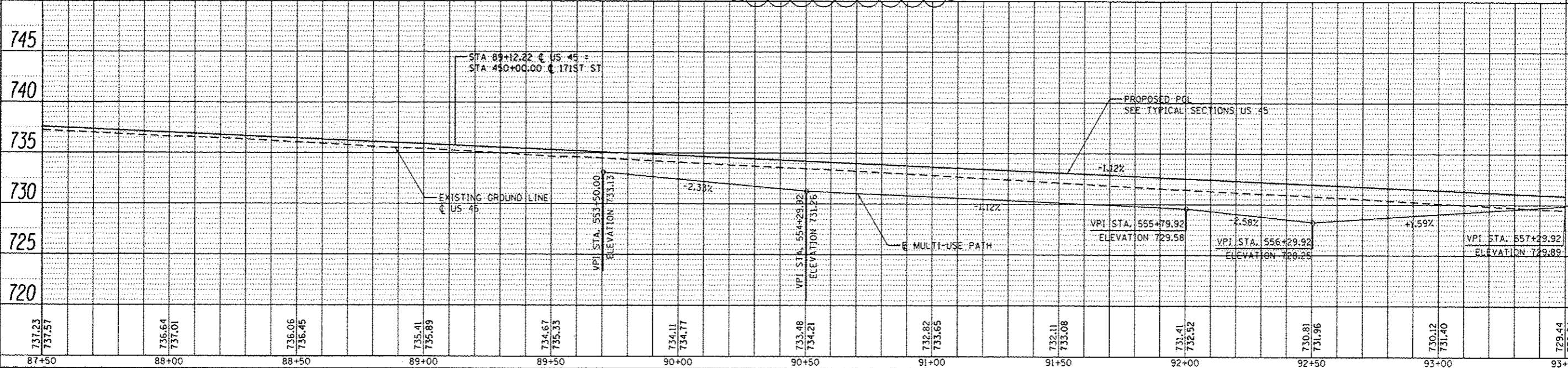
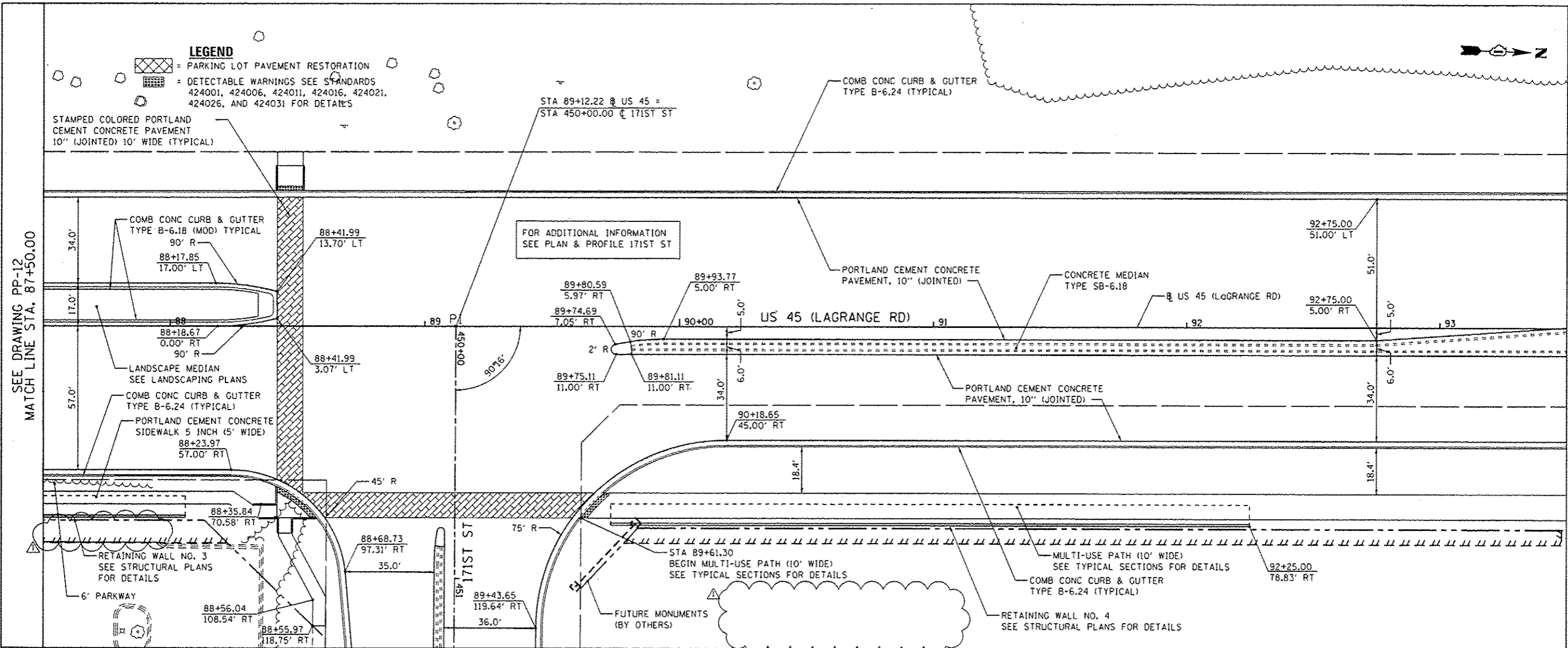
STAMPED COLORED PORTLAND CEMENT CONCRETE PAVEMENT 10" (JOINTED) 10' WIDE (TYPICAL)



DATE	
BY	
DESIGNED	
DRAWN	
CHECKED	
DATE	

DATE	
BY	
DESIGNED	
DRAWN	
CHECKED	
DATE	

URS
 100 S. WACKER DR.
 SUITE 500
 CHICAGO, IL 60606
 TEL: 312.291.4000
 FAX: 312.291.4098



87+50	88+00	88+50	89+00	89+50	90+00	90+50	91+00	91+50	92+00	92+50	93+00	93+50
731.23 731.57	736.64 737.01	736.06 736.45	735.41 735.89	734.67 735.33	734.11 734.77	733.48 734.21	732.82 733.65	732.11 733.08	731.41 732.52	730.81 731.96	730.12 731.40	729.44 730.84

FILE NAME: 0160F05-SHT-PLAN-PP-13.dgn
 USER NAME: james.pugh
 PLOT SCALE: 1/8" = 1'-0"
 PLOT DATE: 4/10/2013

DESIGNED - JTF
 DRAWN - JTF
 CHECKED - MJT
 DATE - 03/13/13

REVISED - 04/12/2013
 REVISED -
 REVISED -
 REVISED -

**STATE OF ILLINOIS
 DEPARTMENT OF TRANSPORTATION**

PROPOSED PLAN AND PROFILE - US 45 (LAGRANGE ROAD)
 SCALE: 1" = 20' HORIZ. 1" = 5' VERT. SHEET 13 OF 26 SHEETS STA. 87+50.00 TO STA. 93+50.00

F.A.P. RTE. 330	SECTION 103R-3	COUNTY COOK	TOTAL SHEETS 932	SHEET NO. 82
PP-13			CONTRACT NO. 60F05	
ILLINOIS FED. AID PROJECT				

SEE DRAWING PP-12
 MATCH LINE STA. 87+50.00

MATCH LINE STA. 93+50.00
 SEE DRAWING PP-14