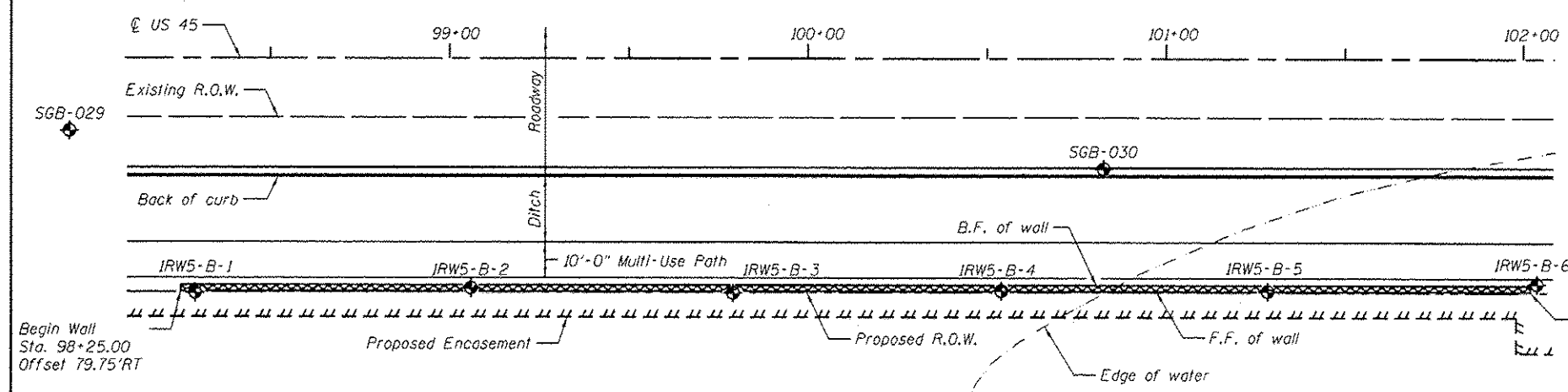
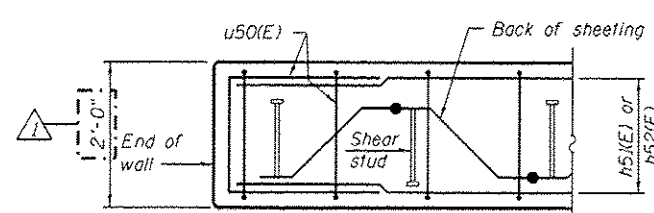


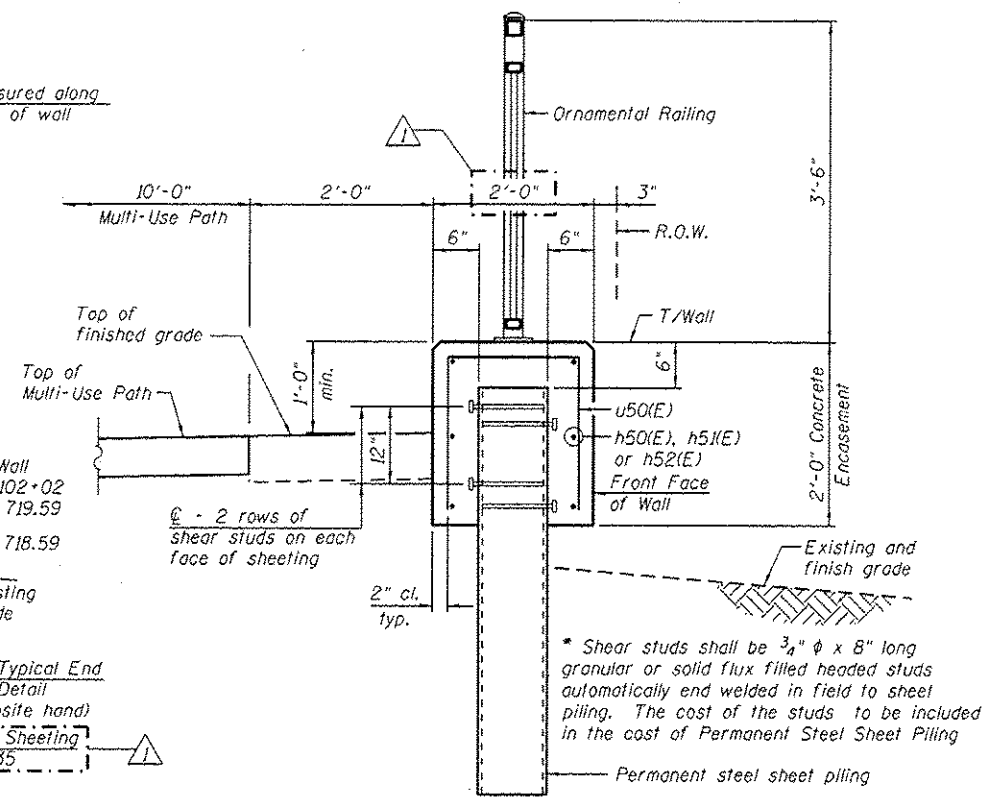
**ELEVATION**  
(Looking West at F.F. of Wall)



**PLAN**



**PLAN AT END OF WALL**



**TYPICAL SECTION THROUGH WALL**

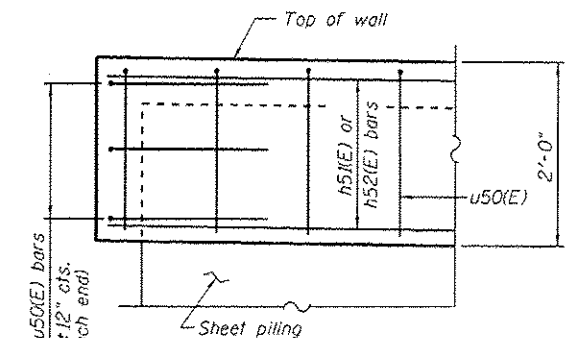
**BILL OF MATERIAL**

Bar	No.	Size	Length	Shape
h50(E)	48	#5	32'-11"	—
h52(E)	24	#5	29'-8"	—
h52(E)	6	#5	16'-8"	—
u50(E)	388	#5	4'-10"	□
Concrete Structures		Cu. Yd.	55.9	
Reinforcement Bars, Epoxy Coated		Pound	4,460	
Permanent Steel Sheet Piling		Sq. Ft.	6,906	
Ornamental Railing		Foot	377	

Bars indicated thus 3x2-#5 etc. indicates 3 lines of bars with 2 lengths per line.

**NOTES:**

Wall stations, offsets and dimensions are measured at front face of wall. All exposed corners shall have a 1" chamfer. For General Notes, Wall Key Plan and US 45 Profile, see Sheet 1. For Typical Wall Details and Ornamental Railing see Sheet 2. The details for the concrete cap, reinforcement and required number of shear stud connectors are based on Section AZ 18 sheet piling. If the Contractor chooses to use any other section, then the Contractor shall submit revised concrete cap and reinforcement configuration for approval by the Engineer. Such changes shall not be cause for additional compensation.



**TYPICAL END CAP DETAIL**

**LEGEND**

- ① - Panel No.
- ◆ - Soil Boring
- F.F. - Front Face
- B.F. - Back Face
- E.F. - Each Face

**BAR LAPS**

Basic Lap	Top Bar Lap
#5 bars - 2'-7"	#5 bars - 2'-11"

URS  
 100 S. WACKER DR.  
 SUITE 500  
 CHICAGO, IL 60606  
 TEL 312/939-0000  
 FAX 312/939-0098