

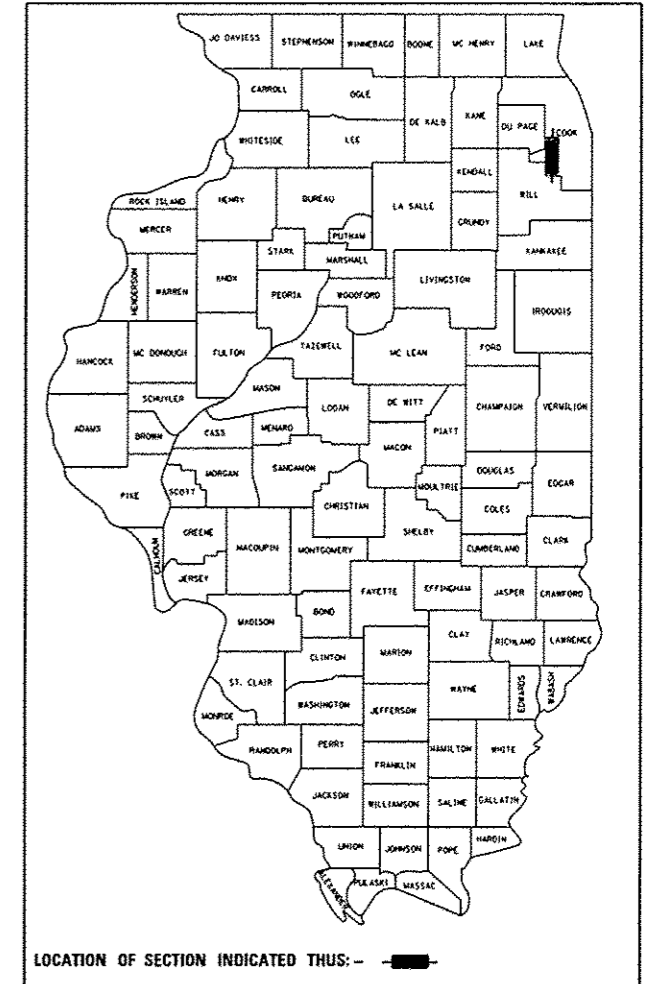
STATE OF ILLINOIS  
DEPARTMENT OF TRANSPORTATION  
DIVISION OF HIGHWAYS

**PROPOSED  
HIGHWAY PLANS**

FAP ROUTE 330: US 45 (LAGRANGE ROAD)  
159TH STREET TO 179TH STREET  
SECTION: 103R-3  
PROJECT: NHPP-0330(074)  
ADDITIONAL LANES  
COOK COUNTY  
C-91-569-08

F.A.P. RTE.	SECTION	COUNTY	TOTAL SHEETS	SHEET NO.
330	103R-3	COOK	932	1
		ILLINOIS	CONTRACT NO.	60F05

\*932-6+4=930  
D-91-436-12  
D-91-569-08



FOR INDEX OF SHEETS, SEE SHEET NO. 3

PROJECT LOCATED IN VILLAGES OF ORLAND HILLS, ORLAND PARK, TINLEY PARK

**STATION EQUATIONS:**

STA 36+08.40 @ US 45 (LAGRANGE ROAD) = STA 128+97.17 @ US 45 (LAGRANGE ROAD) =  
STA 911+55.47 @ 179TH STREET STA 402+27.12 @ 165TH STREET

STA 62+65.24 @ US 45 (LAGRANGE ROAD) = STA 140+57.76 @ US 45 (LAGRANGE ROAD) =  
STA 475+00.00 @ 175TH STREET STA 378+04.62 @ 163RD STREET

STA 89+12.22 @ US 45 (LAGRANGE ROAD) = STA 450+00 @ 171ST STREET

STA 115+66.58 @ US 45 (LAGRANGE ROAD) = STA 433+24.40 @ 167TH STREET

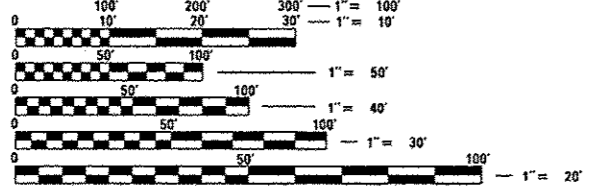
**DESIGN DESIGNATION:**

US 45 (LAGRANGE ROAD): 2600 (20) OTHER PRINCIPAL ARTERIAL AND STRATEGIC REGIONAL ARTERIAL (SRA) - CLASS II TRUCK ROUTE 11.55 (JPCP-20)

179TH STREET: 150 (20) MINOR ARTERIAL 8.68 (FD-20)  
171ST STREET: 500 (20) MINOR ARTERIAL 8.68 (FD-20)  
167TH STREET: 550 (20) MINOR ARTERIAL 8.68 (FD-20)  
163RD STREET: 250 (20) LOCAL 8.68 (FD-20)

**DESIGN TRAFFIC DATA:**

US 45 (LAGRANGE ROAD) = 45 MPH  
ADT = 38,000 (2000, 179TH ST TO 167TH ST)  
ADT = 40,000 (2000, 167TH ST TO 159TH ST)  
ADT = 45,000 (2030, 179TH ST TO 167TH ST)  
ADT = 43,000 (2030, 167TH ST TO 159TH ST)  
179TH STREET = 45 MPH  
MHV = 3,662 (2000)  
171ST STREET = 45 MPH  
MHV = 2,740 (2000)  
167TH STREET = 45 MPH  
MHV = 2,838 (2000)  
163RD STREET = 25 MPH  
MHV = 2,948 (2000)

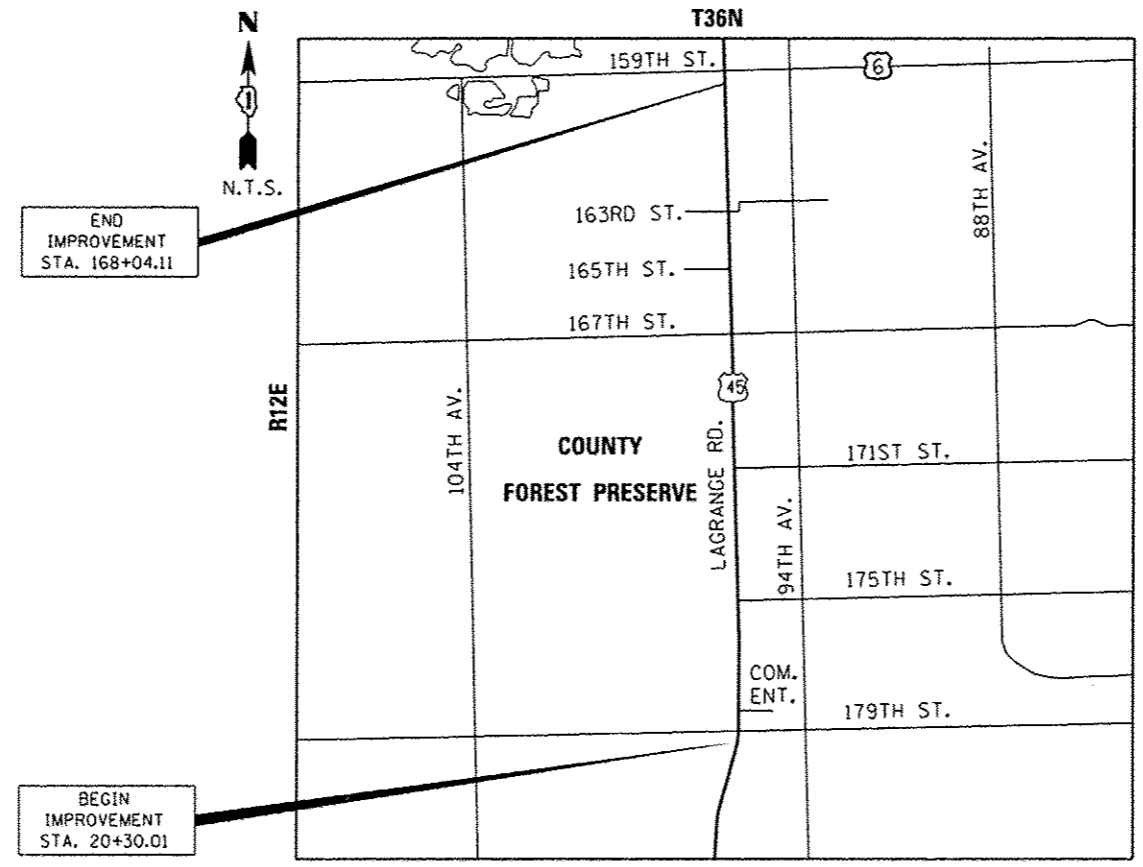


FULL SIZE PLANS HAVE BEEN PREPARED USING STANDARD ENGINEERING SCALES. REDUCED SIZED PLANS WILL NOT CONFORM TO STANDARD SCALES. IN MAKING MEASUREMENTS ON REDUCED PLANS, THE ABOVE SCALES MAY BE USED.

J.U.L.I.E.  
JOINT UTILITY LOCATION INFORMATION FOR EXCAVATION  
1-800-892-0123  
OR 811

PROJECT MANAGER: RAJENDRA SHAH, P.E.  
(847) 705-4555

CONTRACT NO. 60F05



END IMPROVEMENT STA. 168+04.11

BEGIN IMPROVEMENT STA. 20+30.01

ORLAND TOWNSHIP

GROSS LENGTH = 14,774.10 FT. = 2.798 MILE  
NET LENGTH = 14,774.10 FT. = 2.798 MILE

DAVID D. LANDEWEER  
062-042363  
LICENSED PROFESSIONAL ENGINEER OF ILLINOIS  
2/1/13

SEE SHEET 2 FOR APPLICABLE DESIGN SECTION SIGNATURES

STATE OF ILLINOIS  
DEPARTMENT OF TRANSPORTATION  
DIVISION OF HIGHWAYS

SUBMITTED February 1, 2013  
John Fortmann, Deputy Director of Highways, Region Engineer  
March 22, 2013  
John D. Baranzelli, P.E., B.S., Engineer of Design and Environment  
March 22, 2013  
Omar Osman, P.E., B.S., Director of Highways, Chief Engineer

PRINTED BY THE AUTHORITY OF THE STATE OF ILLINOIS

PLANS PREPARED BY:  
**URS**  
100 S. WACKER DR., SUITE 500 TEL (312)-939-1000  
CHICAGO IL, 60606 FAX (312)-939-4198

RD 8-19-2013