

SHOULDER REMOVALS

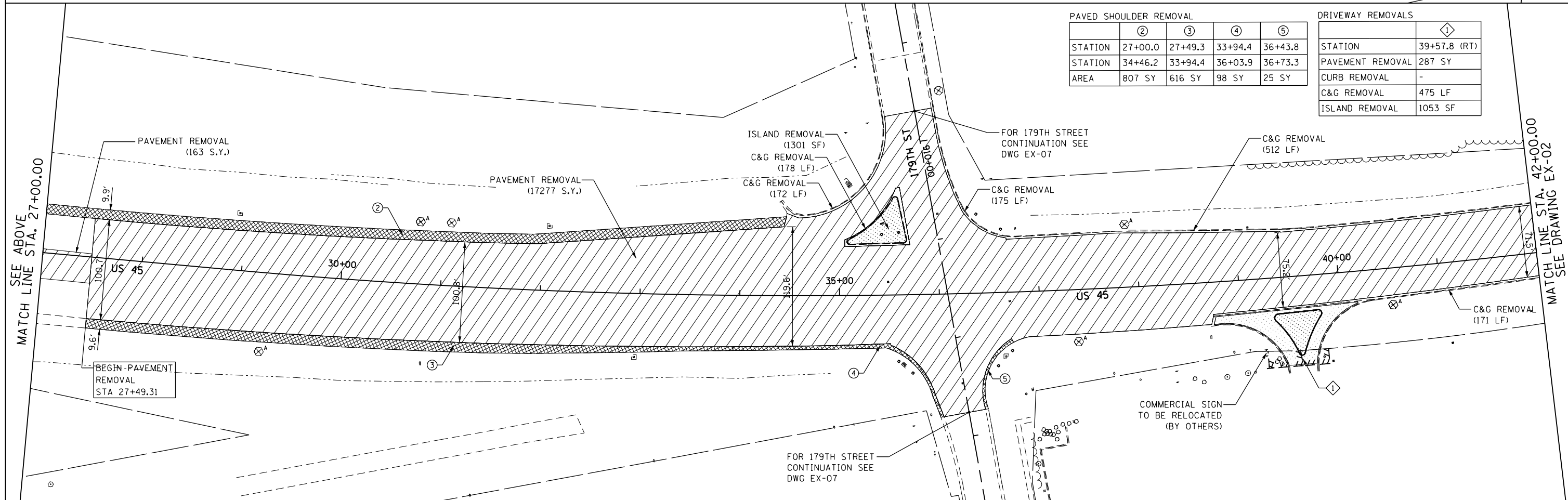
	①
STATION	22+51.2
STATION	27+00.0
AREA	402 SY

**NOTES:**

1. THE CONTRACTOR SHALL CONTACT THE ROADSIDE DEVELOPMENT UNIT IN THE BUREAU OF MAINTENANCE AT (847) 705-4171 AT LEAST 72 HOURS IN ADVANCE OF SELECTIVE CLEARING WORK TO ASSIST WITH MARKING OF TREES TO BE SAVED.
2. TEMPORARY FENCE USED IN TREE PROTECTION SHALL BE LOCATED A MINIMUM OF 1 FOOT OUTSIDE THE DRIPLINE OF THE TREE TO BE PROTECTED AND IN NO CASE CLOSER THAN 5 FEET TO THE TRUNK OF ANY TREE.
3. IN AREAS OF SELECTIVE CLEARING, MULCH METHOD 2 (ACRES) AND WEED CONTROL, PRE-EMERGENT GRANULAR HERBICIDE (ACRES) IS TO BE APPLIED.
4. SEE EROSION CONTROL PLANS FOR TEMPORARY FENCE LIMITS AND "NO INTRUSION" SIGNING LOCATIONS.

**REMOVAL LEGEND**

- PAVEMENT REMOVAL
- HOT MIX ASPHALT SURFACE REMOVAL
- PAVED SHOULDER REMOVAL
- MEDIAN OR ISLAND REMOVAL
- DRIVEWAY PAVEMENT REMOVAL
- SIDEWALK REMOVAL
- PARKING LOT PAVEMENT REMOVAL
- TREE REMOVAL (ACRES)
- TREE REMOVAL (UNIT DIAMETER)
- TREE PROTECTION (UNIT DIAMETER) - TEMPORARY FENCE AND TREE ROOT PRUNING
- REMOVE SIGN PANEL ASSEMBLY - (TYPE SPECIFIED)
- MAIL BOX REMOVAL AND RELOCATION (NOT PAID SEPARATELY)



PAVED SHOULDER REMOVAL

	②	③	④	⑤
STATION	27+00.0	27+49.3	33+94.4	36+43.8
STATION	34+46.2	33+94.4	36+03.9	36+73.3
AREA	807 SY	616 SY	98 SY	25 SY

DRIVEWAY REMOVALS

	①
STATION	39+57.8 (RT)
PAVEMENT REMOVAL	287 SY
CURB REMOVAL	-
C&G REMOVAL	475 LF
ISLAND REMOVAL	1053 SF

URS  
100 S. WACKER DR.  
SUITE 600  
CHICAGO, IL 60606  
TEL (312) 939-1000  
FAX (312) 939-4998

FILE NAME = D160F05-SHT-REM01.dgn	USER NAME = Frank.Stallone	DESIGNED - BFH	REVISED -
PLOT SCALE = 100.000000' / 1"	CHECKED - MJT	DRAWN - BFH	REVISED -
PLOT DATE = 3/14/2013	DATE - 03/13/13		REVISED -

STATE OF ILLINOIS  
DEPARTMENT OF TRANSPORTATION

EXISTING PLAN AND REMOVALS - US 45 (LAGRANGE ROAD)

SCALE: 1"=50' SHEET 1 OF 6 SHEETS STA. BEGIN TO STA. 42+00.00

F.A.P. RTE. 330	SECTION 103R-3	COUNTY COOK	TOTAL SHEETS 932	SHEET NO. 60
EX-01		CONTRACT NO. 60F05		
ILLINOIS FED. AID PROJECT				