

PLAN	SURVEYED	DATE
	PLOTTED	BY
	ALIGNED	
	CHECKED	
	NO. 1	
	NO. 2	
	NO. 3	
	NO. 4	
	NO. 5	
	NO. 6	
	NO. 7	
	NO. 8	
	NO. 9	
	NO. 10	

PROFILE	SURVEYED	DATE
	PLOTTED	BY
	GRADES CHECKED	
	STRUCTURE NOTATIONS CHECKED	
	NO. 1	
	NO. 2	
	NO. 3	
	NO. 4	
	NO. 5	
	NO. 6	
	NO. 7	
	NO. 8	
	NO. 9	
	NO. 10	

100 S. WACKER DR.  
SUITE 500  
CHICAGO, IL 60606  
TEL (312) 329-4000  
FAX (312) 329-4098



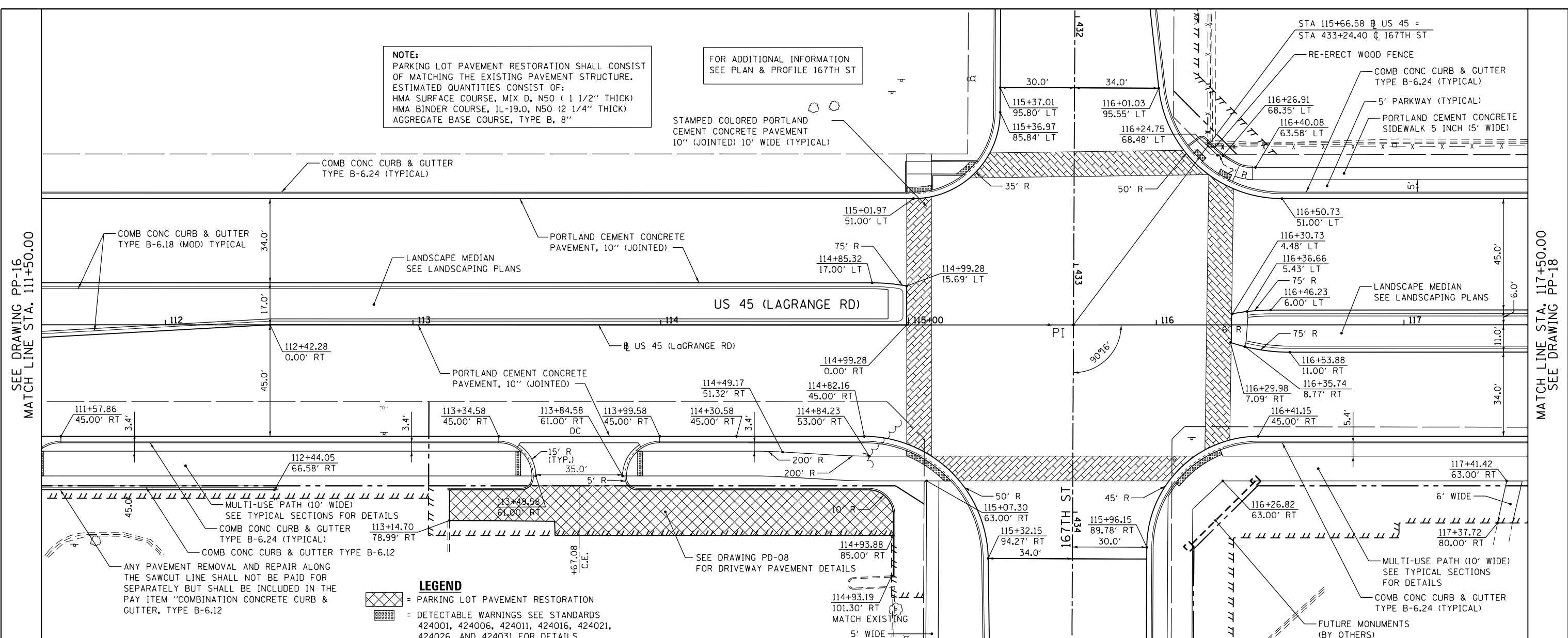
**NOTE:**  
PARKING LOT PAVEMENT RESTORATION SHALL CONSIST OF MATCHING THE EXISTING PAVEMENT STRUCTURE. ESTIMATED QUANTITIES CONSIST OF:  
HMA SURFACE COURSE, MIX D, N50 (1 1/2" THICK)  
HMA BINDER COURSE, IL-19.0, N50 (2 1/4" THICK)  
AGGREGATE BASE COURSE, TYPE B, 8"

FOR ADDITIONAL INFORMATION  
SEE PLAN & PROFILE 167TH ST

STAMPED COLORED PORTLAND CEMENT CONCRETE PAVEMENT  
10" (JOINTED) 10' WIDE (TYPICAL)

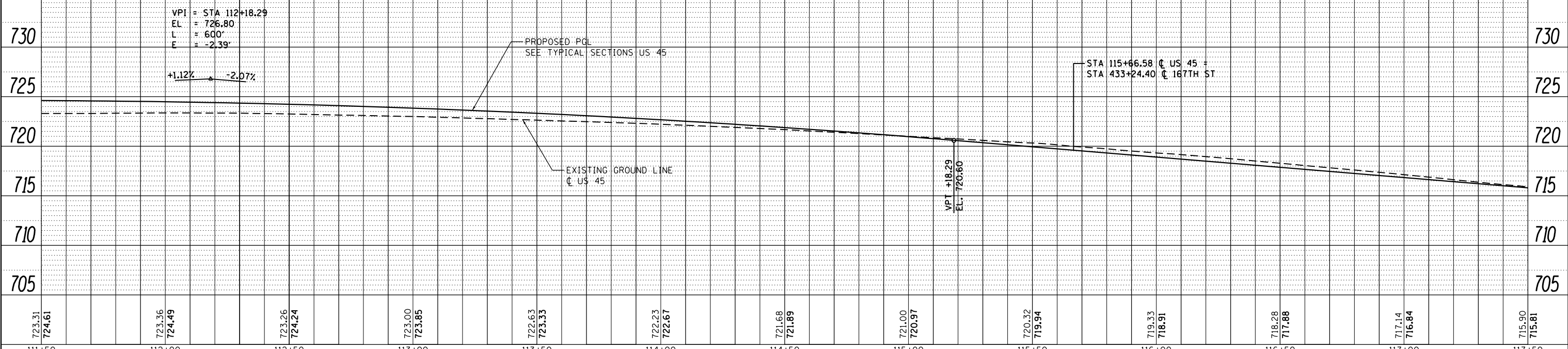
SEE DRAWING PP-16  
MATCH LINE STA. 111+50.00

MATCH LINE STA. 117+50.00  
SEE DRAWING PP-18



ANY PAVEMENT REMOVAL AND REPAIR ALONG THE SAWCUT LINE SHALL NOT BE PAID FOR SEPARATELY BUT SHALL BE INCLUDED IN THE PAY ITEM "COMBINATION CONCRETE CURB & GUTTER, TYPE B-6.12"

**LEGEND**  
 = PARKING LOT PAVEMENT RESTORATION  
 = DETECTABLE WARNINGS SEE STANDARDS 424001, 424006, 424011, 424016, 424021, 424026, AND 424031 FOR DETAILS



FILE NAME =	USER NAME = Frank.Stallone	DESIGNED - JTF	REVISED -
D160F05-SHT-PLNPRF17.dgn		DRAWN - JTF	REVISED -
		CHECKED - MJT	REVISED -
		DATE - 03/13/13	REVISED -

STATE OF ILLINOIS  
DEPARTMENT OF TRANSPORTATION

PROPOSED PLAN AND PROFILE - US 45 (LAGRANGE ROAD)

SCALE: 1"=20'H/1"=5' SHEET 17 OF 26 SHEETS STA. 111+50.00 TO STA. 117+50.00

F.A.P. RTE.	SECTION	COUNTY	TOTAL SHEETS	SHEET NO.
330	103R-3	COOK	932	86
PP-17			CONTRACT NO. 60F05	
ILLINOIS FED. AID PROJECT				