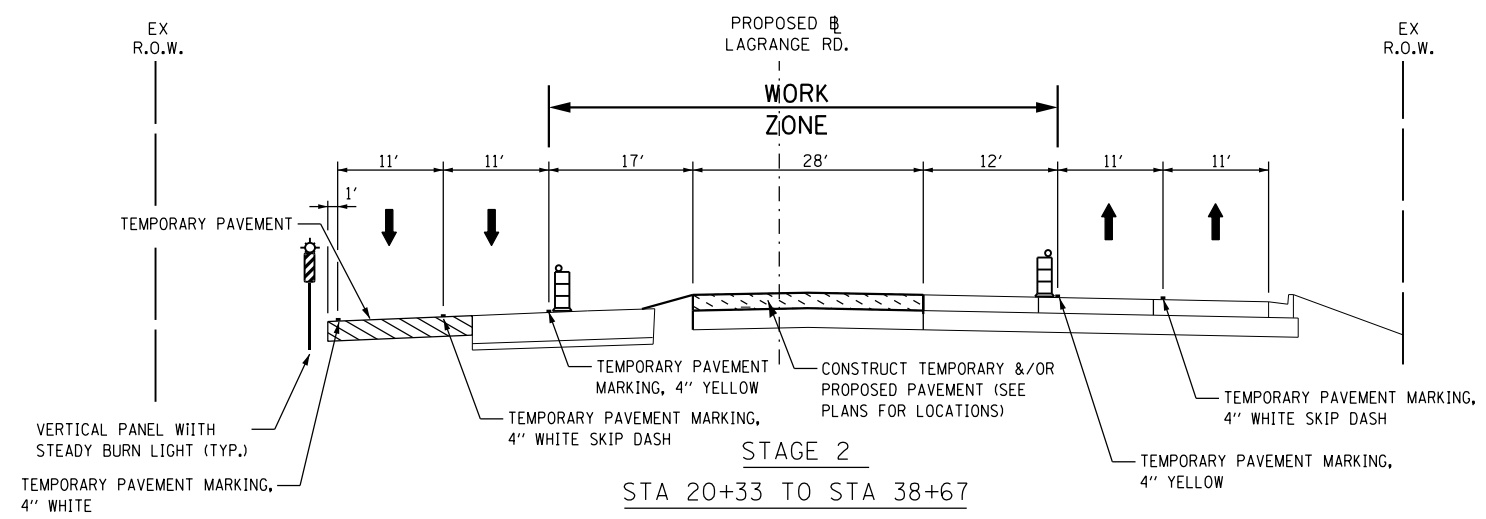
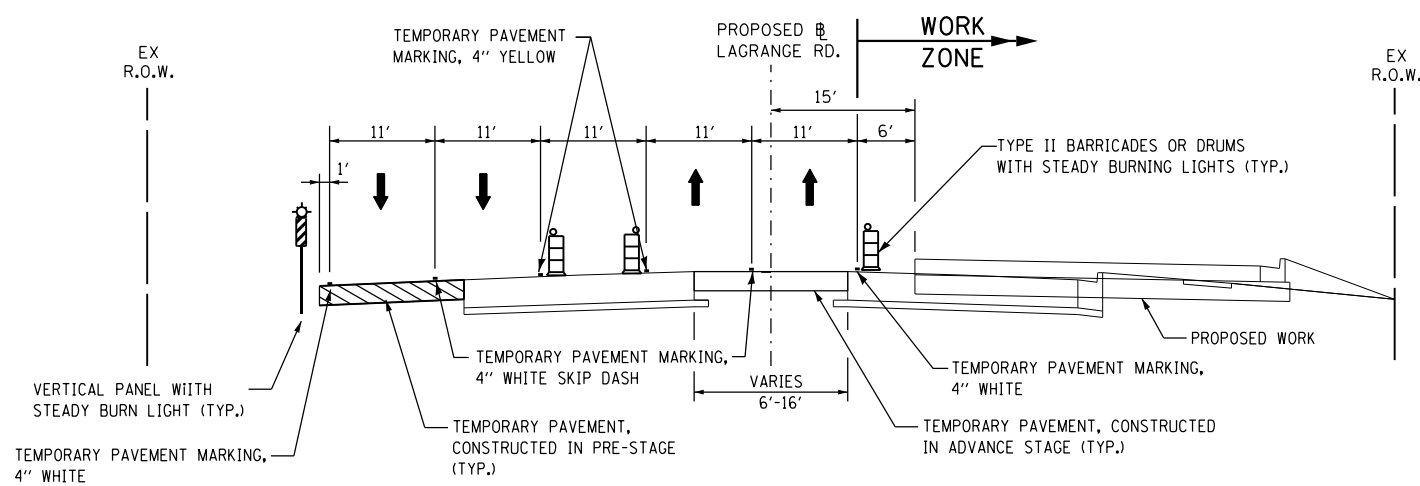


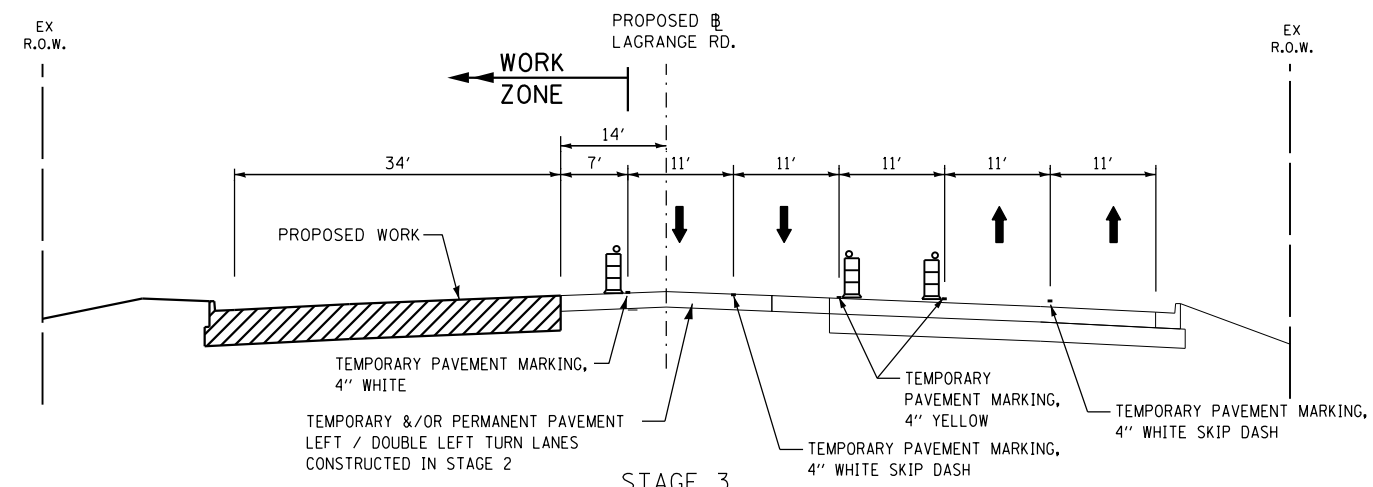
PRESTAGE (SOUTHBOUND TEMPORARY PAVEMENT)  
STA 20+33 TO STA 38+66



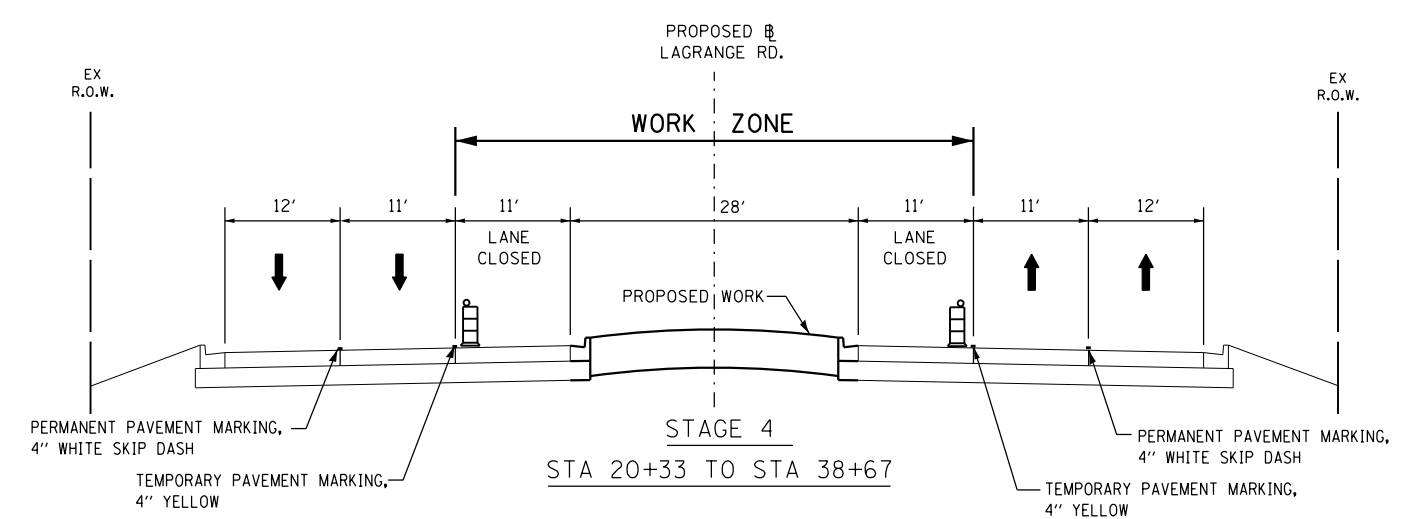
STAGE 2  
STA 20+33 TO STA 38+67



STAGE 1  
STA 20+33 TO STA 38+66



STAGE 3  
STA 20+33 TO STA 38+67



STAGE 4  
STA 20+33 TO STA 38+67

**NOTE**

THE CONTRACTOR SHALL USE WET REFLECTIVE TEMPORARY TAPE, TYPE III, ON EXISTING SURFACES TO REMAIN, AREAS IN CONFLICT WITH OTHER STAGES, AND PERMANENT SURFACES.

THE CONTRACTOR SHALL USE EPOXY PAVEMENT MARKING FOR TEMPORARY PAVEMENT MARKINGS ON PAVEMENT THAT WILL BE REMOVED AND WHERE SHOWN ON THE PLANS.

**APEX**  
 CONSULTING ENGINEERS, LLC  
 111 E. Wacker Drive, Suite 520  
 Chicago, IL 60601  
 Phone (312) 977-0660 Fax (312) 977-0661

FILE NAME =	USER NAME = Nicholas.Talarico	DESIGNED WHI	REVISED
		DRAWN ASI	REVISED
	PLOT SCALE = 20.00' / in.	CHECKED HA	REVISED
	PLOT DATE = 3/14/2013	DATE 03/13/13	REVISED

**STATE OF ILLINOIS  
DEPARTMENT OF TRANSPORTATION**

**MAINTENANCE OF TRAFFIC - TYPICAL SECTIONS**

SCALE: NTS    SHEET NO 1 OF 4 SHEETS    STA. 20+33 TO STA. 38+66

F. as RTE.	SECTION	COUNTY	TOTAL SHEETS	SHEET NO.
330	103R-3	COOK	932	109
<b>MN-04</b>		CONTRACT NO. 60F05		
ILLINOIS FED. AID PROJECT				