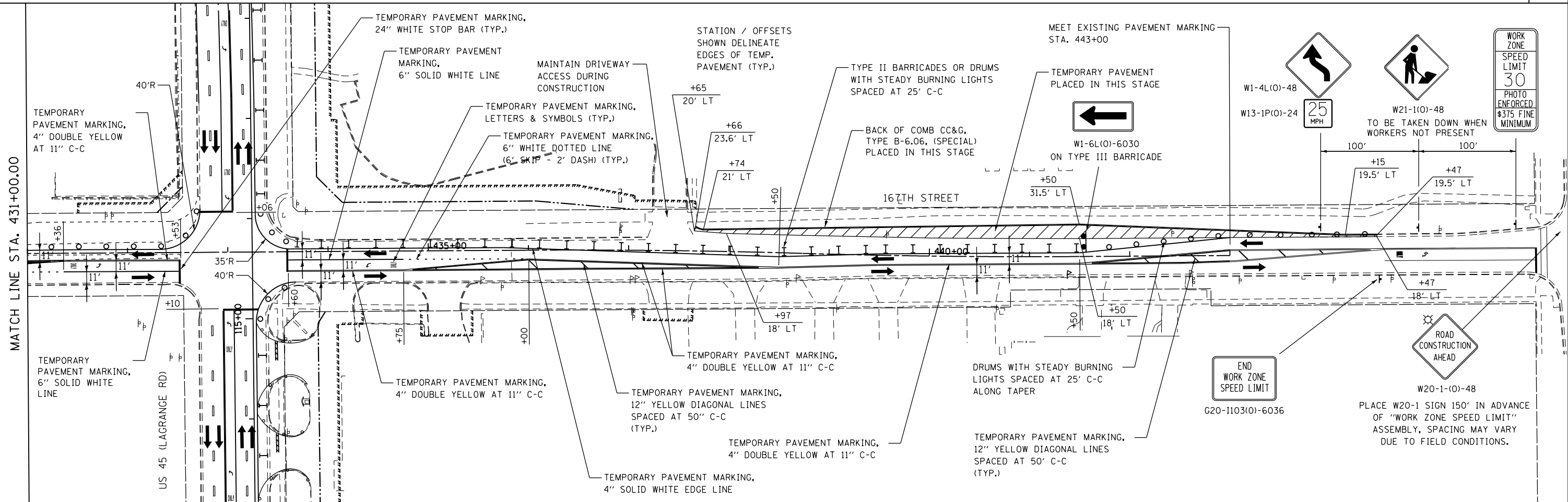


ADVANCE SIGNING FOR EASTBOUND 167TH STREET
(SPACING MAY VARY DUE TO FIELD CONDITIONS)

MATCH LINE STA. 431+00.00



FILE NAME = D160F05-KEA-SHT-MOT-STG1.203.dgn

USER NAME = Nicholas.Talarico
DESIGNED - KES
DRAWN - KCS
PLOT SCALE = 100.00' / 1" = 100.00'
CHECKED - PJO
PLOT DATE = 3/14/2013
DATE = 03/13/13

REVISED -
REVISED -
REVISED -
REVISED -

STATE OF ILLINOIS
DEPARTMENT OF TRANSPORTATION

MAINTENANCE OF TRAFFIC
167TH STREET - STAGE 1

SCALE: 1"=50' SHEET NO. 1 OF 1 SHEETS STA. 423+00 TO STA. 446+00

F.A.P. RTE.	SECTION	COUNTY	TOTAL SHEETS	SHEET NO.
330	103R-3	COOK	932	155
MT-37			CONTRACT NO. 60F05	
ILLINOIS FED. AID PROJECT				