

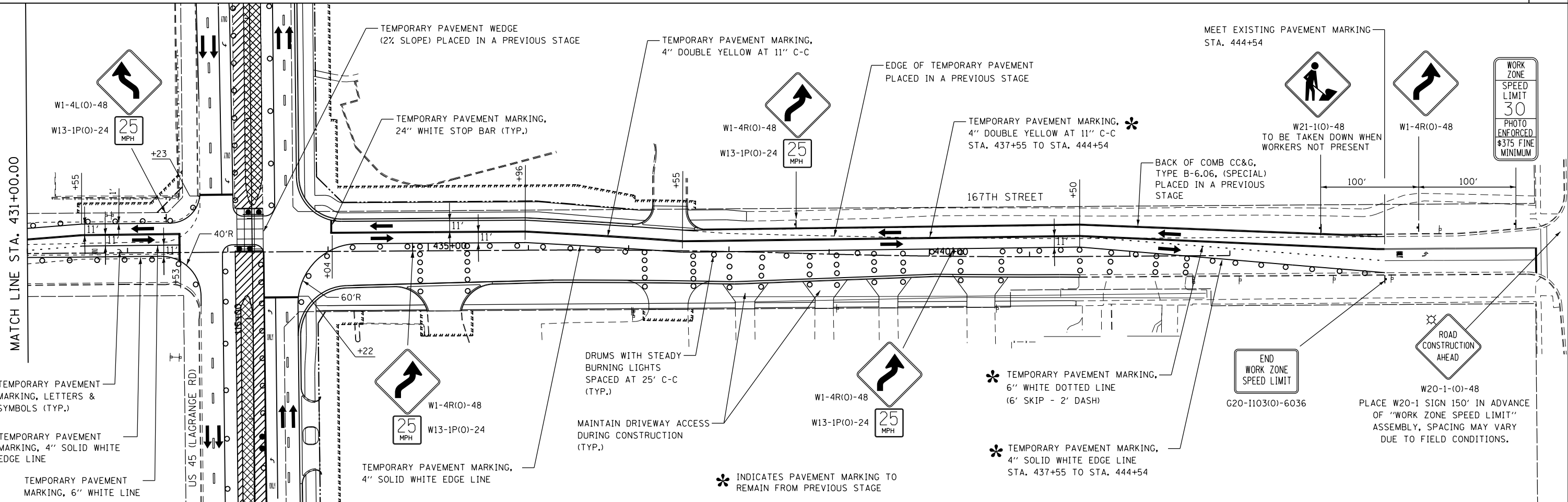
ADVANCE SIGNING FOR EASTBOUND 167TH STREET
(SPACING MAY VARY DUE TO FIELD CONDITIONS)

* INDICATES PAVEMENT MARKING TO REMAIN FROM PREVIOUS STAGE

COMB. CC&G, TYPE B-6.06 (SPECIAL)
STA. 426+71 TO STA. 430+15

TEMPORARY PAVEMENT MARKING,
6" WHITE DOTTED LINE
(6' SKIP - 2' DASH)

MATCH LINE STA. 431+00.00



DRUMS WITH STEADY BURNING LIGHTS SPACED AT 25' C-C (TYP.)

MAINTAIN DRIVEWAY ACCESS DURING CONSTRUCTION (TYP.)

* INDICATES PAVEMENT MARKING TO REMAIN FROM PREVIOUS STAGE

* TEMPORARY PAVEMENT MARKING,
6" WHITE DOTTED LINE
(6' SKIP - 2' DASH)

* TEMPORARY PAVEMENT MARKING,
4" SOLID WHITE EDGE LINE
STA. 437+55 TO STA. 444+54

PLACE W20-1 (0)-48 IN ADVANCE OF "WORK ZONE SPEED LIMIT" ASSEMBLY, SPACING MAY VARY DUE TO FIELD CONDITIONS.

FILE NAME = D:\60F05-KEA-SHT-MOT-STG2A_203.dgn

USER NAME = Nicholas.Talarico
DESIGNED - KES
DRAWN - KCS
CHECKED - PJO
DATE - 03/13/13

REVISIONS:
REVISED -
REVISED -
REVISED -
REVISED -

**STATE OF ILLINOIS
DEPARTMENT OF TRANSPORTATION**

**MAINTENANCE OF TRAFFIC
167TH STREET - STAGE 2A**

SCALE: 1"=50' SHEET NO. 1 OF 1 SHEETS STA. 423+00 TO STA. 446+00

F.A.P. R.E.	SECTION	COUNTY	TOTAL SHEETS	SHEET NO.
330	103R-3	COOK	932	169
MT-51		CONTRACT NO. 60F05		
ILLINOIS FED. AID PROJECT				