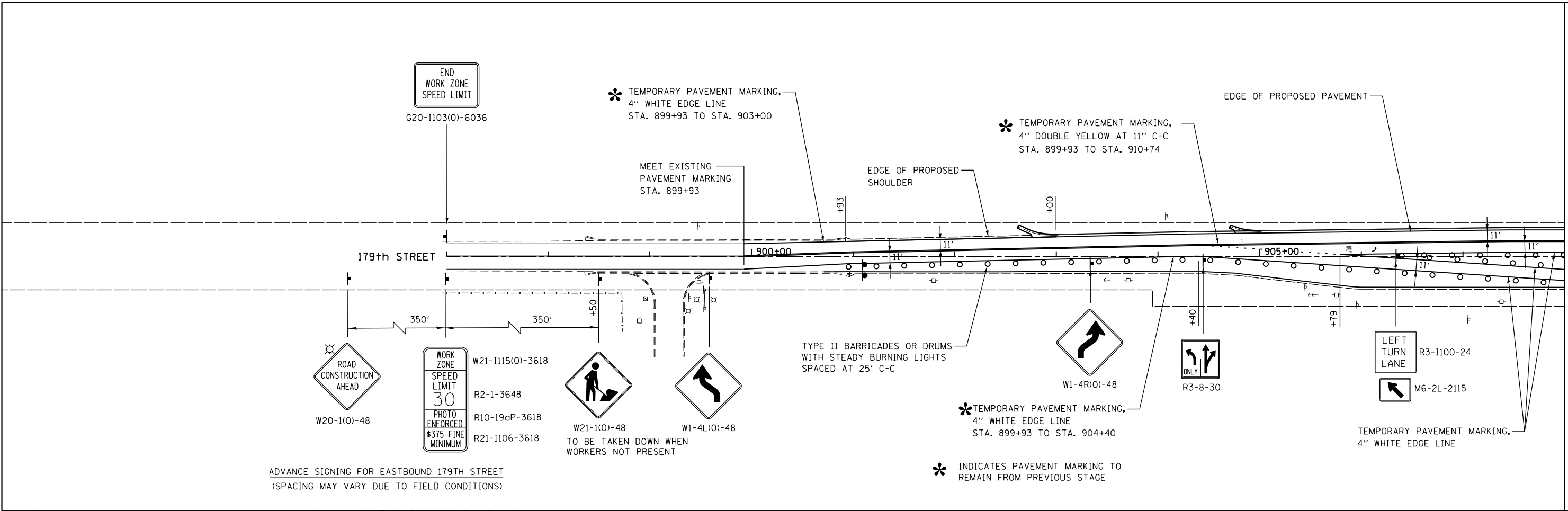
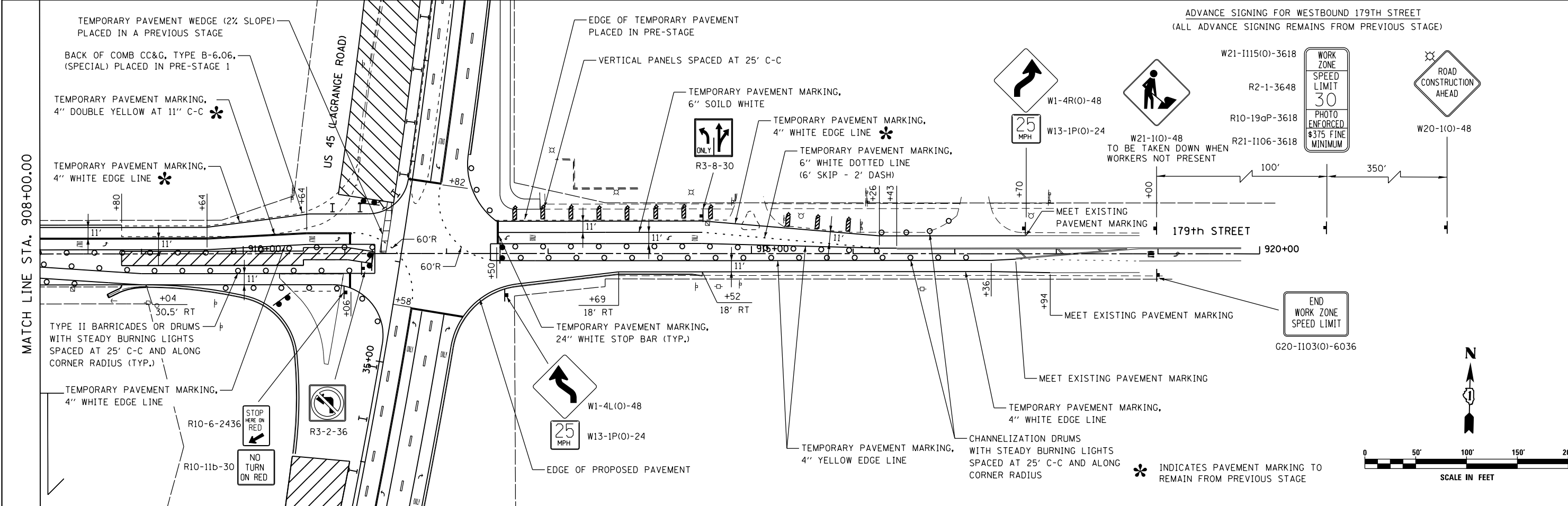


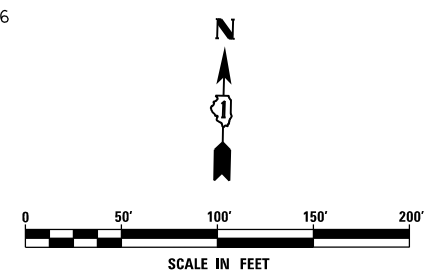
MATCH LINE STA. 908+00.00



ADVANCE SIGNING FOR EASTBOUND 179TH STREET
(SPACING MAY VARY DUE TO FIELD CONDITIONS)



ADVANCE SIGNING FOR WESTBOUND 179TH STREET
(ALL ADVANCE SIGNING REMAINS FROM PREVIOUS STAGE)



FILE NAME = D:\60F05-KEA-SHT-MOT-STG3A_201.dgn	USER NAME = Nicholas.Talarico	DESIGNED - KES	REVISED -
		DRAWN - KCS	REVISED -
		CHECKED - PJO	REVISED -
		DATE - 03/13/13	REVISED -

**STATE OF ILLINOIS
DEPARTMENT OF TRANSPORTATION**

**MAINTENANCE OF TRAFFIC
179TH STREET - STAGE 3A**

SCALE: 1"=50' SHEET NO. 1 OF 1 SHEETS STA. 897+00 TO STA. 920+00

F.A.P. RTE. 330	SECTION 103R-3	COUNTY COOK	TOTAL SHEETS 932	SHEET NO. 178
MT-60		CONTRACT NO. 60F05		
ILLINOIS FED. AID PROJECT				