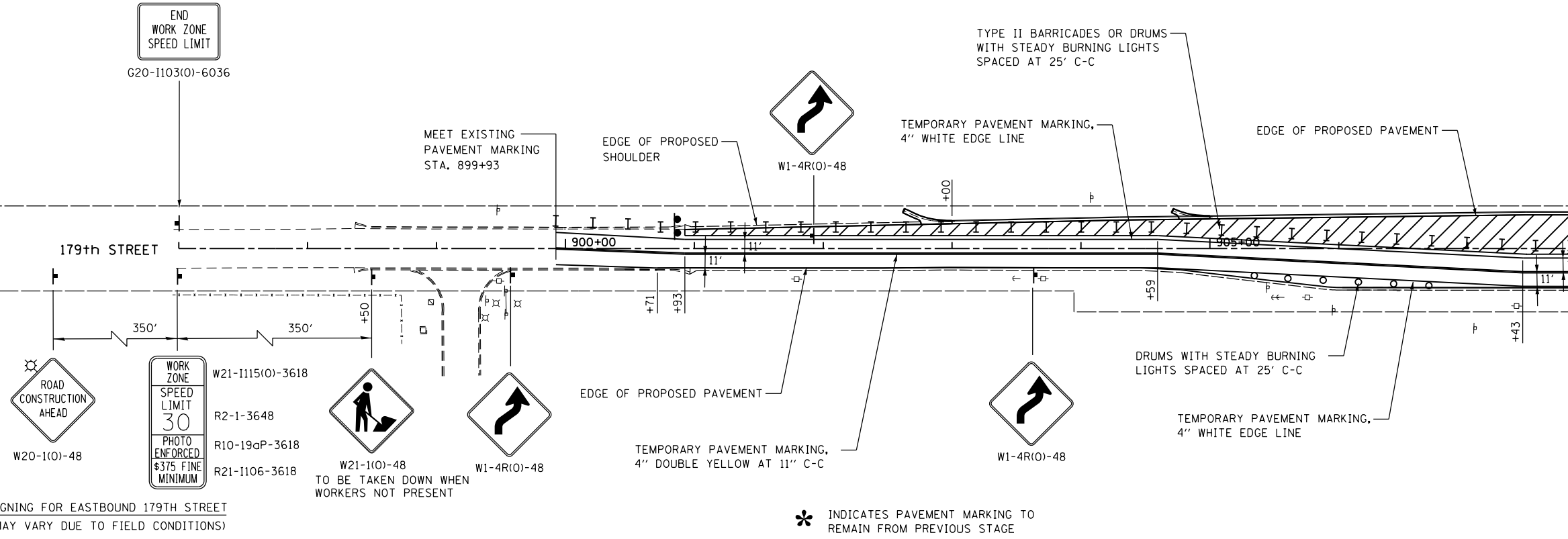
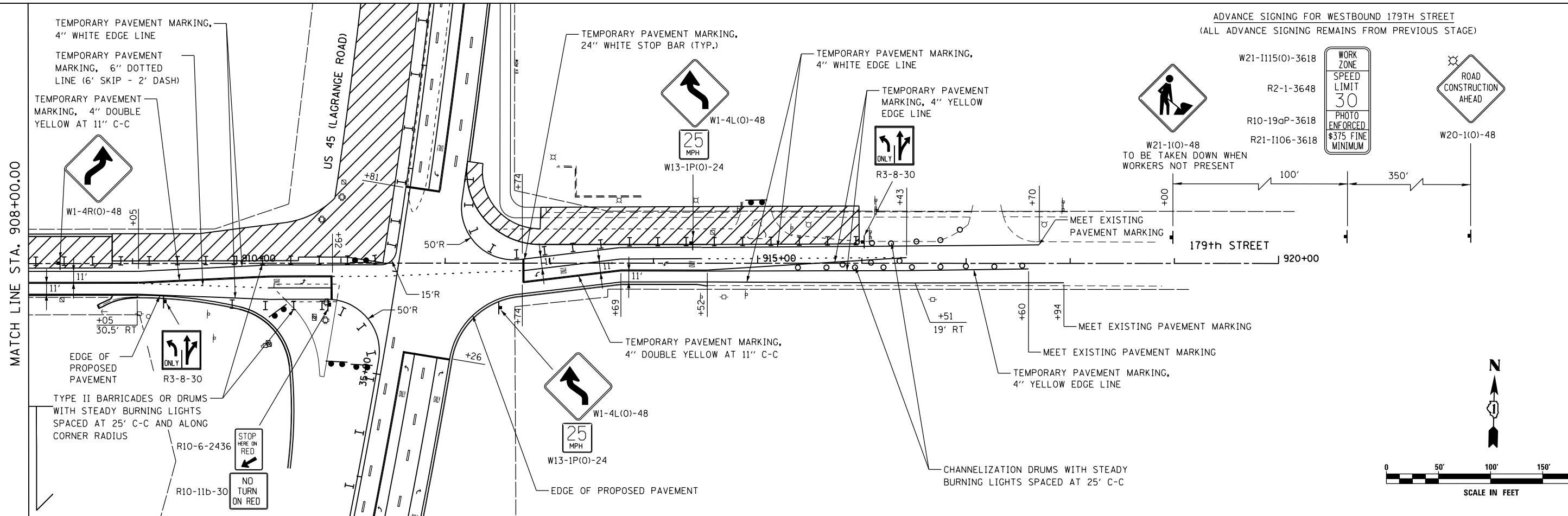


MATCH LINE STA. 908+00.00



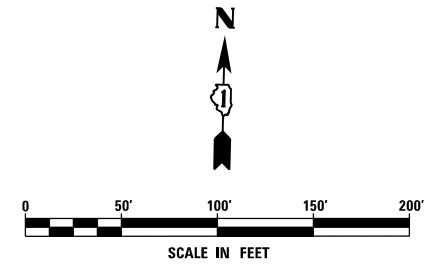
ADVANCE SIGNING FOR EASTBOUND 179TH STREET  
(SPACING MAY VARY DUE TO FIELD CONDITIONS)

\* INDICATES PAVEMENT MARKING TO REMAIN FROM PREVIOUS STAGE



ADVANCE SIGNING FOR WESTBOUND 179TH STREET  
(ALL ADVANCE SIGNING REMAINS FROM PREVIOUS STAGE)

MATCH LINE STA. 908+00.00



FILE NAME = D160F05-KEA-SHT-MOT-STG3B_201.dgn	USER NAME = Nicholas.Talarico	DESIGNED - KES	REVISED -
		DRAWN - KCS	REVISED -
		CHECKED - PJO	REVISED -
		DATE - 03/13/13	REVISED -

**STATE OF ILLINOIS  
DEPARTMENT OF TRANSPORTATION**

<b>MAINTENANCE OF TRAFFIC 179TH STREET - STAGE 3B</b>			
SCALE: 1"=50'	SHEET NO. 1 OF 1 SHEETS	STA. 897+00	TO STA. 920+00

F.A.P. RTE. 330	SECTION 103R-3	COUNTY COOK	TOTAL SHEETS 932	SHEET NO. 181
<b>MT-63</b>		CONTRACT NO. 60F05		
ILLINOIS FED. AID PROJECT				