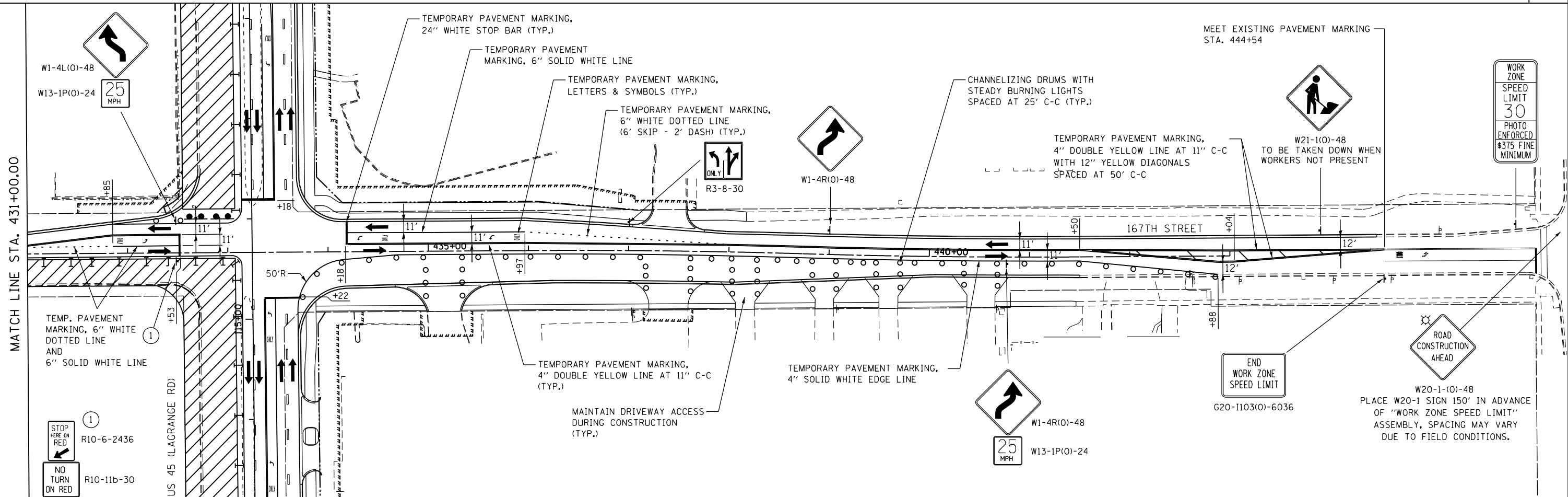


ADVANCE SIGNING FOR EASTBOUND 167TH STREET  
(SPACING MAY VARY DUE TO FIELD CONDITIONS)

\* INDICATES PAVEMENT MARKING TO REMAIN FROM PREVIOUS STAGE

MATCH LINE STA. 431+00.00



MATCH LINE STA. 431+00.00

FILE NAME = D:\60F05-KEA-SHT-MOT-STG3C.203.dgn

USER NAME = Nicholas.Talarico  
 PLOT SCALE = 100.00' / in.  
 PLOT DATE = 3/14/2013

DESIGNED - KES  
 DRAWN - KCS  
 CHECKED - PJO  
 DATE - 03/13/13

REVISED -  
 REVISED -  
 REVISED -  
 REVISED -

**STATE OF ILLINOIS  
 DEPARTMENT OF TRANSPORTATION**

**MAINTENANCE OF TRAFFIC  
 167TH STREET - STAGE 3C**  
 SCALE: 1"=50' SHEET NO. 1 OF 1 SHEETS STA. 423+00 TO STA. 446+00

|                           |         |        |                    |           |
|---------------------------|---------|--------|--------------------|-----------|
| F.A.P. RTE.               | SECTION | COUNTY | TOTAL SHEETS       | SHEET NO. |
| 330                       | 103R-3  | COOK   | 932                | 185       |
| <b>MT-67</b>              |         |        | CONTRACT NO. 60F05 |           |
| ILLINOIS FED. AID PROJECT |         |        |                    |           |