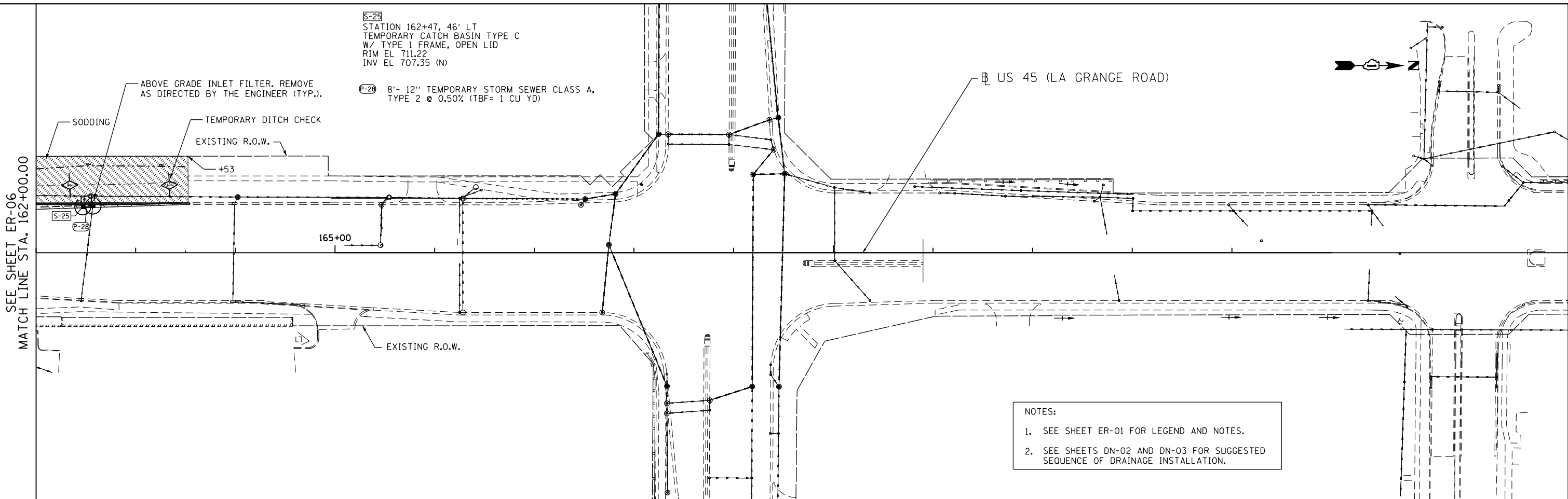


S-25  
 STATION 162+47, 46' LT  
 TEMPORARY CATCH BASIN TYPE C  
 W/ TYPE 1 FRAME, OPEN LID  
 RIM EL 711.22  
 INV EL 707.35 (N)

P-28 8'- 12" TEMPORARY STORM SEWER CLASS A,  
 TYPE 2 @ 0.50% (TBF= 1 CU YD)

SEE SHEET ER-06  
 MATCH LINE STA. 162+00.00



NOTES:  
 1. SEE SHEET ER-01 FOR LEGEND AND NOTES.  
 2. SEE SHEETS DN-02 AND DN-03 FOR SUGGESTED SEQUENCE OF DRAINAGE INSTALLATION.

**APEX**  
 CONSULTING ENGINEERS, LLC  
 111 E. Wacker Drive, Suite 520  
 Chicago, IL 60601

FILE NAME = D160F05-SHT-ER0507.dgn	USER NAME = Anthony.Plutz	DESIGNED - L.N.	REVISED -
		DRAWN - M.P.	REVISED -
		CHECKED - W.H.I.	REVISED -
		DATE - 03/13/13	REVISED -

**STATE OF ILLINOIS  
 DEPARTMENT OF TRANSPORTATION**

**EROSION AND SEDIMENT CONTROL PLAN  
 US 45 (LAGRANGE ROAD) - SOUTH CONTRACT - PRE-STAGE**

SCALE: 1"=50' SHEET NO. 6 OF 6 SHEETS STA. 162+00.00 TO STA. END

F.A.P. RTE. 330	SECTION 103R-3	COUNTY COOK	TOTAL SHEETS 932	SHEET NO. 197
<b>ER-07</b>			CONTRACT NO. 60F05	
ILLINOIS FED. AID PROJECT				