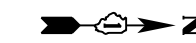
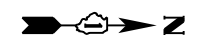


SEE SHEET ER-28
MATCH LINE STA. 102+00.00

SEE ABOVE
MATCH LINE STA. 117+00.00

MATCH LINE STA. 117+00.00
SEE BELOW

MATCH LINE STA. 132+00.00
SEE SHEET ER-30



CL 167TH STREET

CL US 45 (LA GRANGE ROAD)

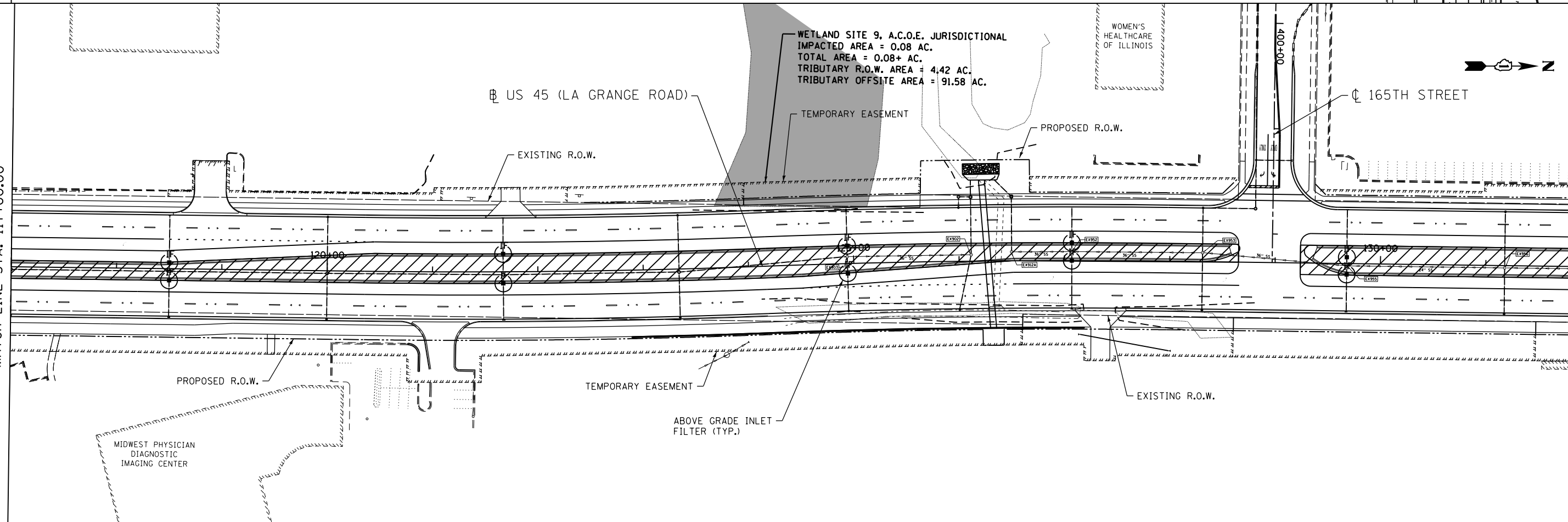
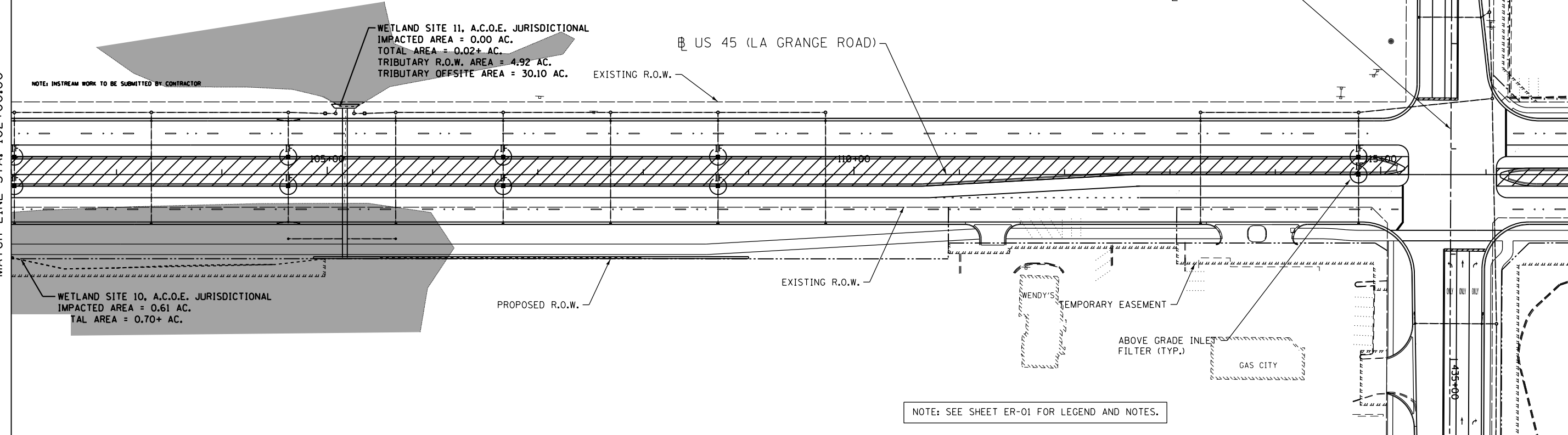
CL 165TH STREET

WETLAND SITE 11, A.C.O.E. JURISDICTIONAL
IMPACTED AREA = 0.00 AC.
TOTAL AREA = 0.02+ AC.
TRIBUTARY R.O.W. AREA = 4.92 AC.
TRIBUTARY OFFSITE AREA = 30.10 AC.

WETLAND SITE 9, A.C.O.E. JURISDICTIONAL
IMPACTED AREA = 0.08 AC.
TOTAL AREA = 0.08+ AC.
TRIBUTARY R.O.W. AREA = 4.42 AC.
TRIBUTARY OFFSITE AREA = 91.58 AC.

NOTE: INSTREAM WORK TO BE SUBMITTED BY CONTRACTOR

NOTE: SEE SHEET ER-01 FOR LEGEND AND NOTES.



FILE NAME =	USER NAME = Anthony.Plutz
D160F05-SHT-ER0529.dgn	

DESIGNED - L.N.	REVISD -
DRAWN - M.P.	REVISD -
CHECKED - W.H.I.	REVISD -
DATE - 03/13/13	REVISD -

PLOT SCALE = 100.000000' / in.
PLOT DATE = 3/15/2013

**STATE OF ILLINOIS
DEPARTMENT OF TRANSPORTATION**

**EROSION AND SEDIMENT CONTROL PLAN
US 45 (LAGRANGE ROAD) - SOUTH CONTRACT - STAGE IV**

SCALE: 1"=50' SHEET NO. 4 OF 6 SHEETS STA. 102+00.00 TO STA. 132+00.00

F.A.P. RTE.	SECTION	COUNTY	TOTAL SHEETS	SHEET NO.
330	103R-3	COOK	932	219
ER-29			CONTRACT NO. 60F05	
ILLINOIS FED. AID PROJECT				