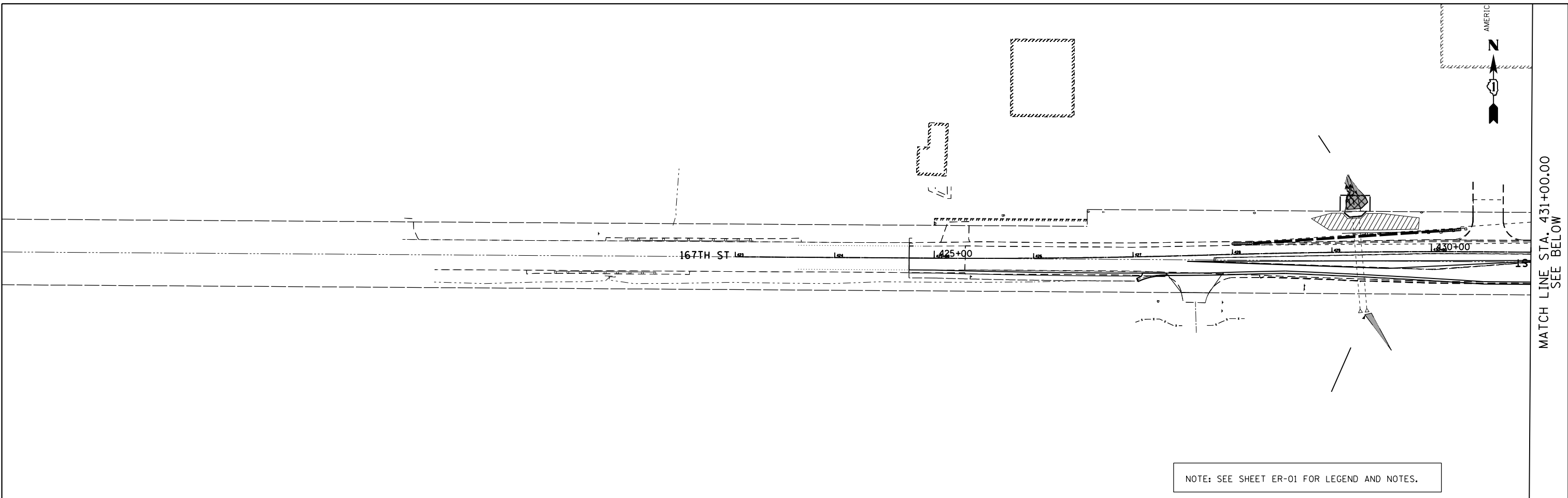
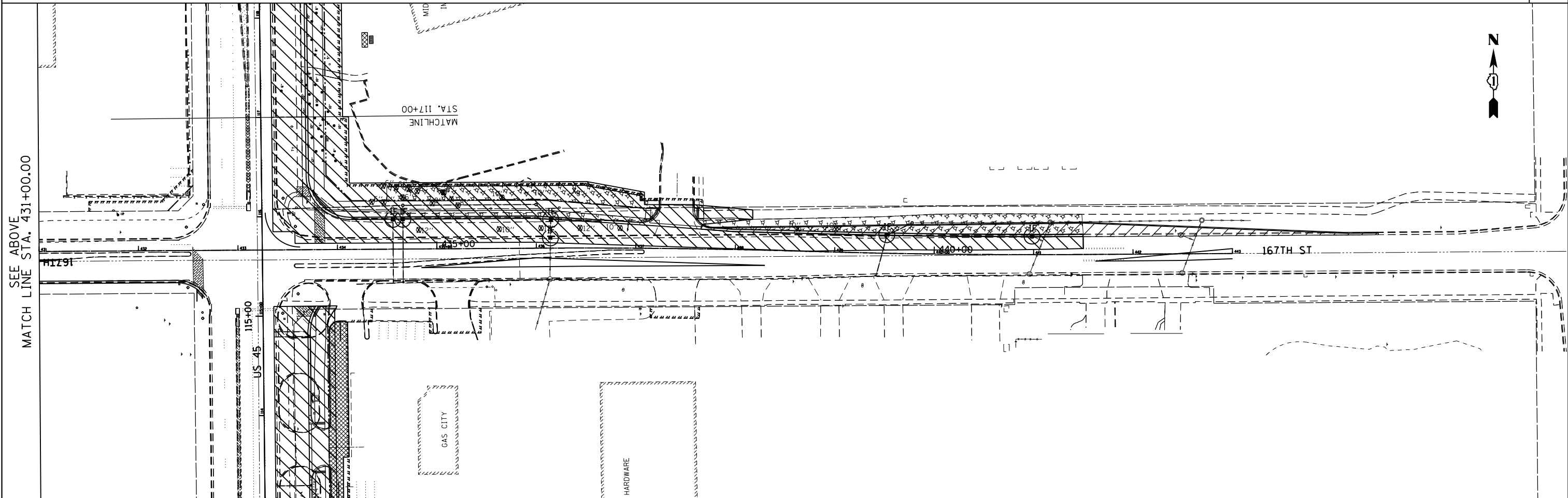


SEE ABOVE
MATCH LINE STA. 431+00.00



NOTE: SEE SHEET ER-01 FOR LEGEND AND NOTES.

MATCH LINE STA. 431+00.00
SEE BELOW

FILE NAME =
D160F05-SHT-ER0538.dgn

USER NAME = Anthony.Plutz	DESIGNED - L.N.	REVISED -
	DRAWN - M.P.	REVISED -
PLOT SCALE = 100.000000' / 1" =	CHECKED - W.H.I.	REVISED -
PLOT DATE = 3/15/2013	DATE - 03/13/13	REVISED -

DESIGNED - L.N.	REVISED -
DRAWN - M.P.	REVISED -
CHECKED - W.H.I.	REVISED -
DATE - 03/13/13	REVISED -

**STATE OF ILLINOIS
DEPARTMENT OF TRANSPORTATION**

**EROSION AND SEDIMENT CONTROL PLAN - SOUTH CONTRACT
167TH STREET - STAGE I**

SCALE: 1"=50' SHEET NO. 1 OF 1 SHEETS STA. 423+00.00 TO STA. 443+00.00

F. As RTE.	SECTION	COUNTY	TOTAL SHEETS	SHEET NO.
330	103R-3	COOK	932	228
ER-38			CONTRACT NO. 60F05	
ILLINOIS FED. AID PROJECT				