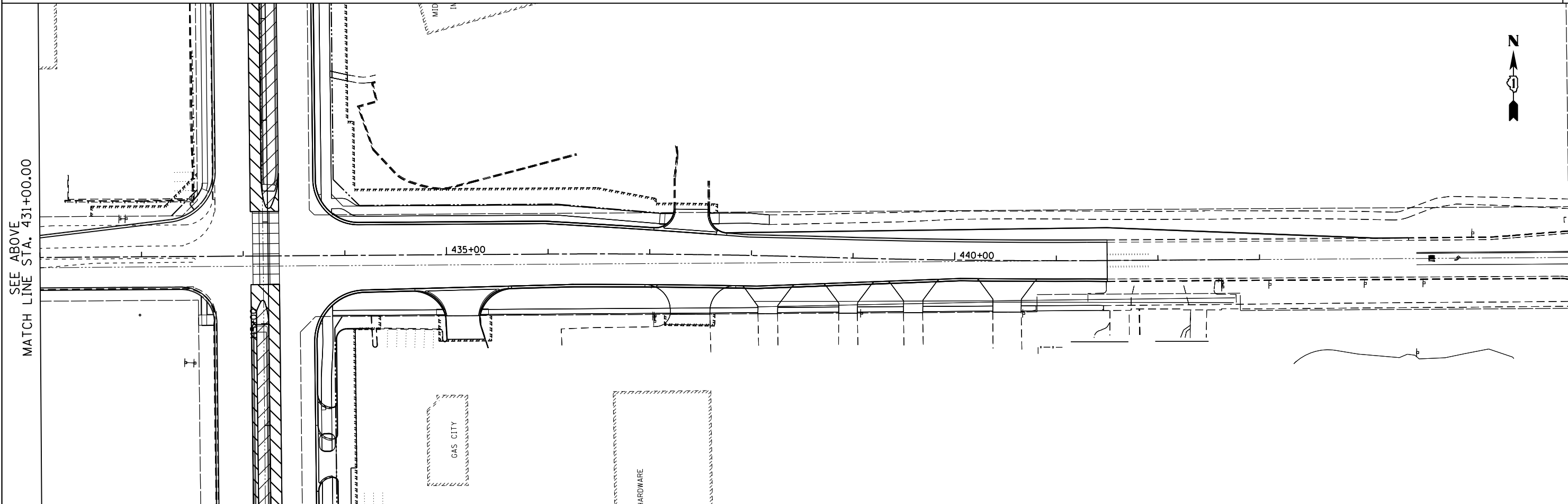


NOTE: SEE SHEET ER-01 FOR LEGEND AND NOTES.

NOTE: NO EROSION CONTROL ITEMS THIS SHEET.

MATCH LINE STA. 431+00.00
SEE BELOW



SEE ABOVE
MATCH LINE STA. 431+00.00

FILE NAME = D160F05-SHT-ER0548_167.thdgn	USER NAME = Anthony.Plutz	DESIGNED - L.N.	REVISED -	STATE OF ILLINOIS DEPARTMENT OF TRANSPORTATION	EROSION AND SEDIMENT CONTROL PLAN - SOUTH CONTRACT 167TH STREET - STAGE II			F. As RTE.	SECTION	COUNTY	TOTAL SHEETS	SHEET NO.
	PLOT SCALE = 100.000000' / in.	DRAWN - M.P.	REVISED -		330	103R-3	COOK	932	238			
	PLOT DATE = 3/15/2013	CHECKED - W.H.I.	REVISED -		ER-48			CONTRACT NO. 60F05				
		DATE - 03/13/13	REVISED -		SCALE: 1"=50'	SHEET NO. 1 OF 1 SHEETS	STA. 423+00.00 TO STA. 443+00.00	ILLINOIS FED. AID PROJECT				