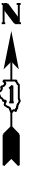


PERIMETER EROSION BARRIER—
 STA. 899+98, J-HOOK @
 75' C-C

PERIMETER EROSION BARRIER—

MATCH LINE STA. 908+00.00
 SEE BELOW

NOTE: SEE SHEET ER-01 FOR LEGEND AND NOTES.



SEE ABOVE
 MATCH LINE STA. 908+00.00

APEX
 CONSULTING ENGINEERS, LLC
 111 E. Wacker Drive, Suite 520
 Chicago, IL 60601

FILE NAME = D160F05-SHT-ER0557.179th.dgn	USER NAME = Anthony.Plutz	DESIGNED - L.N.	REVISED -
		DRAWN - M.P.	REVISED -
	PLOT SCALE = 100.000000' / 1" =	CHECKED - W.H.I.	REVISED -
	PLOT DATE = 3/15/2013	DATE - 03/13/13	REVISED -

**STATE OF ILLINOIS
 DEPARTMENT OF TRANSPORTATION**

**EROSION AND SEDIMENT CONTROL PLAN - SOUTH CONTRACT
 179TH STREET - STAGE 3B**

SCALE: 1"=50' SHEET NO. 1 OF 1 SHEETS STA. 897+00.00 TO STA. 920+00.00

F. #	SECTION	COUNTY	TOTAL SHEETS	SHEET NO.
330	103R-3	COOK	932	247
ER-57		CONTRACT NO. 60F05		
ILLINOIS FED. AID PROJECT				

