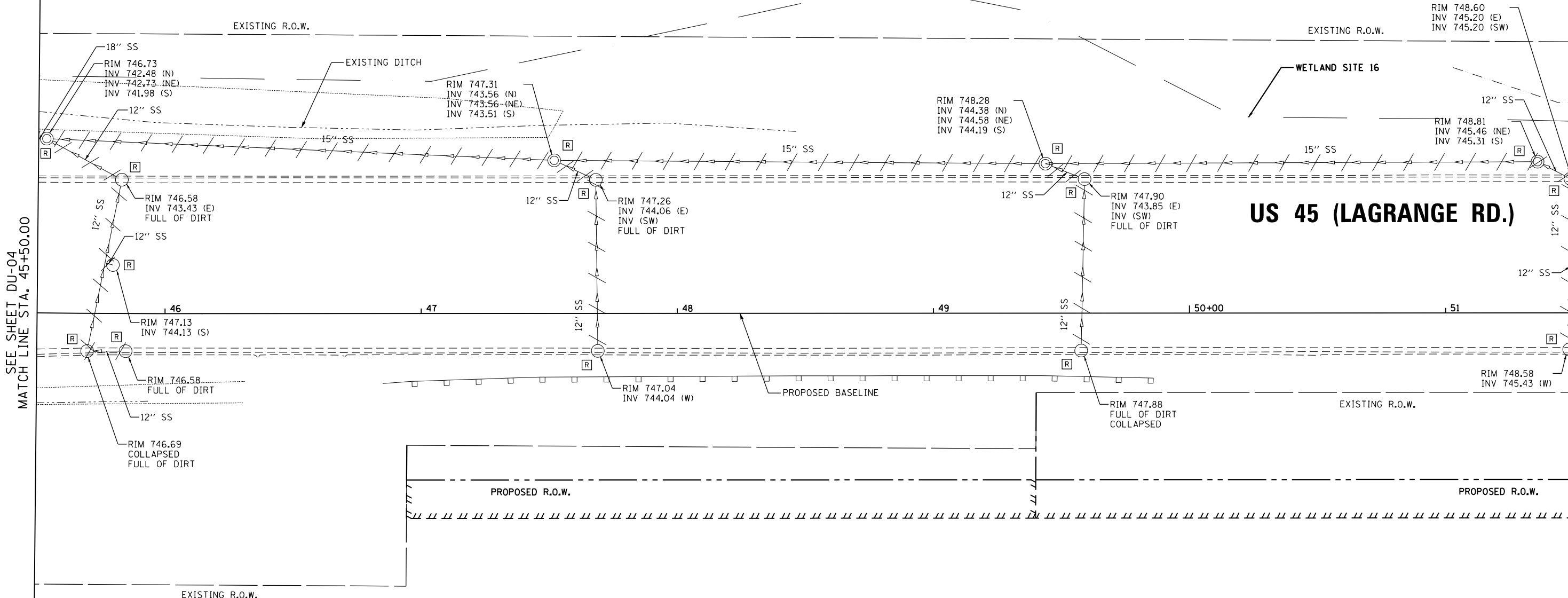


REMOVING CATCH BASINS
 45+69.7, 14.7 RT
 45+79.5, 18.9 LT
 45+82.9, 52.2 LT
 45+84.6, 14.7 RT
 47+68.2, 52.1 LT
 47+69.0, 14.6 RT
 49+57.7, 14.6 RT
 49+59.0, 52.3 LT
 51+48.3, 14.3 RT
 51+48.8, 52.4 LT

REMOVING MANHOLES
 45+53.2, 68.0 LT
 47+52.0, 59.7 LT
 49+43.8, 58.4 LT
 51+36.0, 59.0 LT

STORM SEWER REMOVAL - 12"
 STA. 45+53.2 TO 45+82.9 - 29'
 STA. 45+69.7 TO 45+82.9 - 64'
 STA. 45+69.7 TO 45+84.6 - 11'
 STA. 45+76.4 TO 45+79.5 - 1'
 STA. 47+52.0 TO 47+68.2 - 13'
 STA. 47+68.2 TO 47+69.0 - 63'
 STA. 49+43.8 TO 49+59.0 - 12'
 STA. 49+57.7 TO 49+59.0 - 63'
 STA. 51+36.0 TO 51+48.8 - 10'
 STA. 51+48.3 TO 51+48.8 - 63'

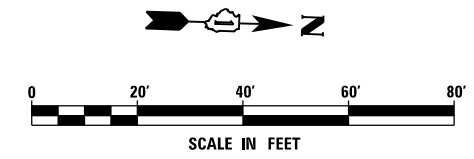
STORM SEWER REMOVAL - 15"
 STA. 45+53.2 TO 47+52.0 - 193'
 STA. 47+52.0 TO 49+43.8 - 187'
 STA. 49+43.8 TO 51+36.0 - 187'



SEE SHEET DU-04
 MATCH LINE STA. 45+50.00

MATCH LINE STA. 51+50.00
 SEE SHEET DU-06

US 55 (LAGRANGE RD.)



NOTE:
 1. SEE DRAWING DN-01 FOR DRAINAGE LEGEND AND NOTES.
 2. SEE DRAWINGS DS-01 THROUGH DS-11 FOR STRUCTURE AND PIPE INFORMATION

URS
 100 S. WACKER DR.
 SUITE 600
 CHICAGO, IL 60606
 TEL (312) 939-1000
 FAX (312) 939-4198

FILE NAME = D160F05-KEA-SHT-DRAINEX05.dgn	USER NAME = Frank.Stallone	DESIGNED - MGS	REVISED -
SHT.PLAN	PLOT SCALE = 40.0001' / in.	DRAWN - REW	REVISED -
	PLOT DATE = 3/14/2013	CHECKED - JRS	REVISED -
		DATE - 03/13/13	REVISED -

**STATE OF ILLINOIS
 DEPARTMENT OF TRANSPORTATION**

EXISTING DRAINAGE PLAN - US 55 (LAGRANGE ROAD)

SCALE: 1"=20' SHEET 5 OF 35 SHEETS STA. 45+50.00 TO STA. 51+50.00

F.A.P. RTE.	SECTION	COUNTY	TOTAL SHEETS	SHEET NO.
330	103R-3	COOK	932	261
DU-05			CONTRACT NO. 60F05	
ILLINOIS FED. AID PROJECT				