

REMOVING CATCH BASINS  
 59+02.3, 14.4 RT  
 59+03.9, 52.3 LT  
 59+11.1, 19.0 LT  
 61+94.0, 52.7 LT

REMOVING MANHOLES  
 58+94.9, 58.8 LT  
 62+38.3, 58.3 LT  
 62+67.2, 77.9 LT  
 63+10.6, 60.4 LT

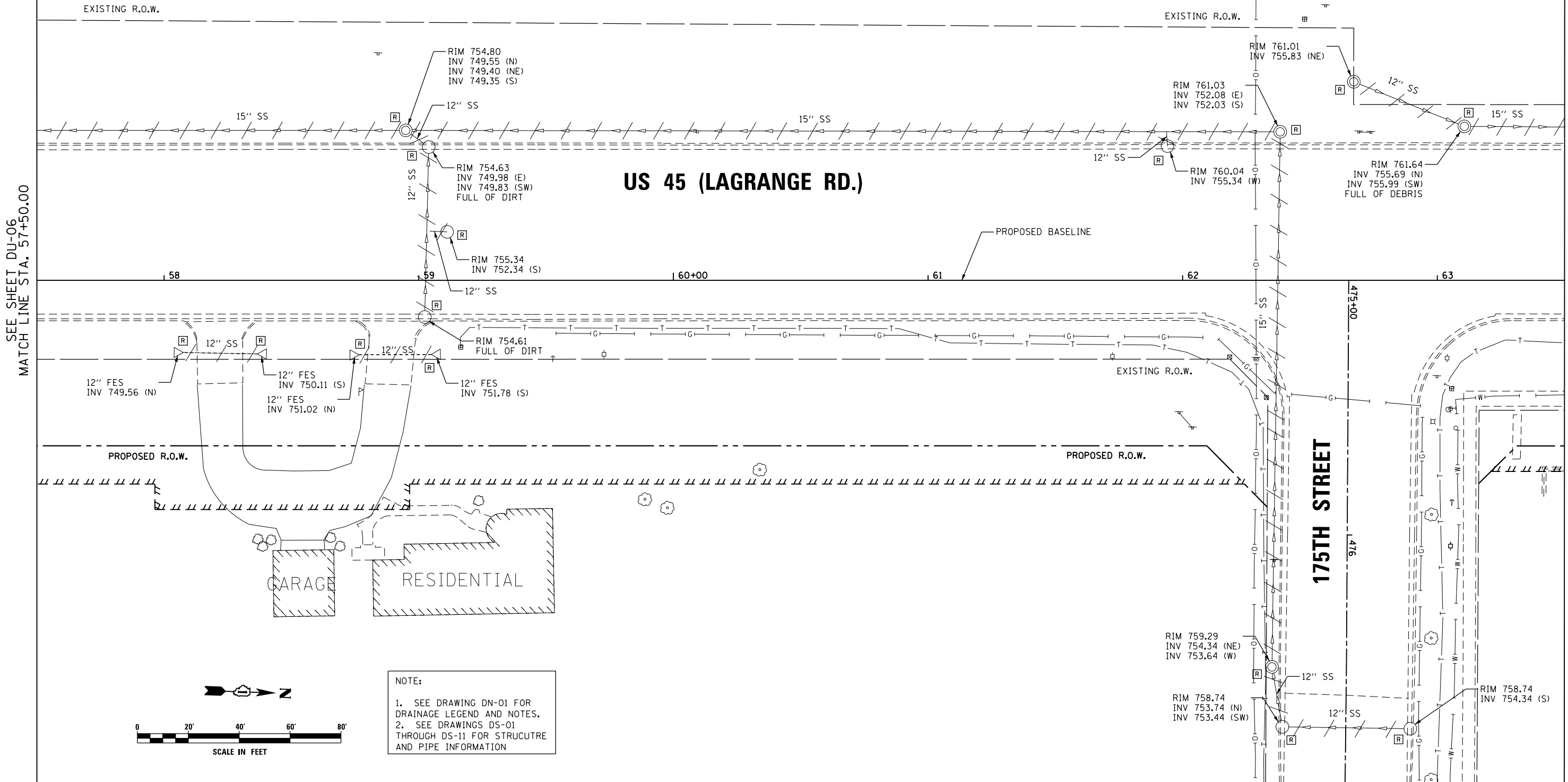
FLARED END SECTION REMOVAL  
 58+07.5, 28.4 RT  
 58+36.6, 28.9 RT  
 58+76.6, 29.3 RT  
 59+04.9, 29.1 RT

STORM SEWER REMOVAL - 12"  
 STA. 58+94.9 TO 59+03.9 - 7'  
 STA. 59+03.9 TO 59+02.3 - 63'  
 STA. 59+03.1 TO 59+11.1 - 6'  
 STA. 61+93.6 TO 61+94.0 - 4'  
 STA. 62+67.2 TO 63+10.6 - 42'

STORM SEWER REMOVAL - 15"  
 STA. 58+94.9 TO 62+38.3 - 338'  
 STA. 62+38.3 TO 62+35.1 - 206'

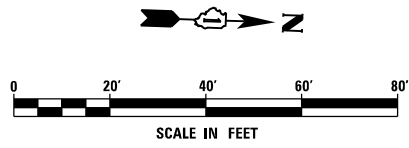
PIPE CULVERT REMOVAL  
 STA. 58+07.5 TO 58+36.6 - 29'  
 STA. 58+76.6 TO 59+04.9 - 28'

SEE DU-29 FOR 175TH ST. EXISTING DRAINAGE



SEE SHEET DU-06  
 MATCH LINE STA. 57+50.00

MATCH LINE STA. 63+50.00  
 SEE SHEET DU-08



NOTE:  
 1. SEE DRAWING DN-01 FOR DRAINAGE LEGEND AND NOTES.  
 2. SEE DRAWINGS DS-01 THROUGH DS-11 FOR STRUCTURE AND PIPE INFORMATION

URS  
 100 S. WACKER DR.  
 SUITE 600  
 CHICAGO, IL 60606  
 TEL (312) 939-1000  
 FAX (312) 939-4998

FILE NAME = D160F05-KEA-SHT-DRAINEX07.dgn	USER NAME = Frank.Stallone	DESIGNED - MGS	REVISED -
SHT.PLAN	PLOT SCALE = 40.0001' / in.	DRAWN - REW	REVISED -
	PLOT DATE = 3/14/2013	CHECKED - JRS	REVISED -
		DATE - 03/13/13	REVISED -

STATE OF ILLINOIS  
 DEPARTMENT OF TRANSPORTATION

EXISTING DRAINAGE PLAN - US 45 (LAGRANGE ROAD)  
 SCALE: 1"=20' SHEET 7 OF 35 SHEETS STA. 57+50.00 TO STA. 63+50.00

F.A.P. RTE. 330	SECTION 103R-3	COUNTY COOK	TOTAL SHEETS 932	SHEET NO. 263
DU-07		CONTRACT NO. 60F05		
ILLINOIS FED. AID PROJECT				