

REMOVING CATCH BASINS
 88+32.7, 18.4 LT
 88+71.4, 52.4 LT
 90+22.6, 15.1 RT
 91+63.0, 52.5 LT
 91+64.3, 15.2 RT

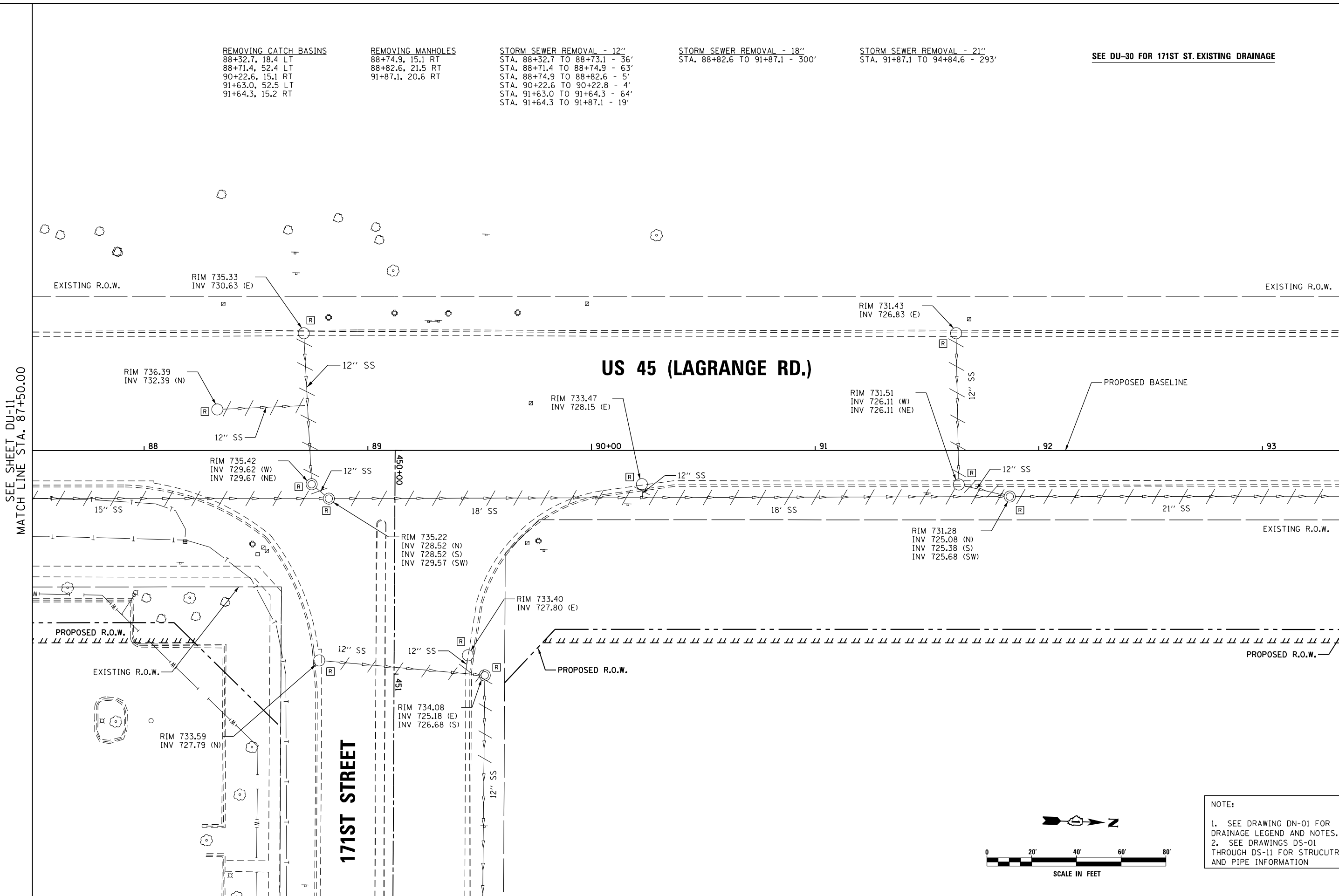
REMOVING MANHOLES
 88+74.9, 15.1 RT
 88+82.6, 21.5 RT
 91+87.1, 20.6 RT

STORM SEWER REMOVAL - 12"
 STA. 88+32.7 TO 88+73.1 - 36'
 STA. 88+71.4 TO 88+74.9 - 63'
 STA. 88+74.9 TO 88+82.6 - 5'
 STA. 90+22.6 TO 90+22.8 - 4'
 STA. 91+63.0 TO 91+64.3 - 64'
 STA. 91+64.3 TO 91+87.1 - 19'

STORM SEWER REMOVAL - 18"
 STA. 88+82.6 TO 91+87.1 - 300'

STORM SEWER REMOVAL - 21"
 STA. 91+87.1 TO 94+84.6 - 293'

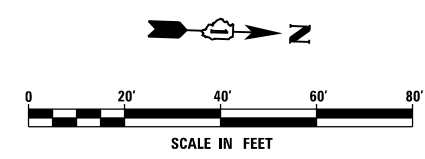
SEE DU-30 FOR 171ST ST. EXISTING DRAINAGE



SEE SHEET DU-11
 MATCH LINE STA. 87+50.00

MATCH LINE STA. 93+50.00
 SEE SHEET DU-13

URS
 100 S. WACKER DR.
 SUITE 600
 CHICAGO, IL 60606
 TEL (312) 939-1000
 FAX (312) 939-4998



NOTE:
 1. SEE DRAWING DN-01 FOR DRAINAGE LEGEND AND NOTES.
 2. SEE DRAWINGS DS-01 THROUGH DS-11 FOR STRUCTURE AND PIPE INFORMATION

FILE NAME = D160F05-KEA-SHT-DRAINEX12.dgn	USER NAME = Frank.Stallone	DESIGNED - MGS	REVISED -	STATE OF ILLINOIS DEPARTMENT OF TRANSPORTATION	EXISTING DRAINAGE PLAN - US 45 (LAGRANGE ROAD)			F.A.P. RTE. 330	SECTION 103R-3	COUNTY COOK	TOTAL SHEETS 932	SHEET NO. 268
	PLOT SCALE = 40.0001' / in.	CHECKED - JRS	REVISED -		SCALE: 1"=20'	SHEET 12 OF 35 SHEETS	STA. 87+50.00 TO STA. 93+50.00	DU-12 CONTRACT NO. 60F05				
SHT.PLAN	PLOT DATE = 3/14/2013	DATE - 03/13/13	REVISED -		ILLINOIS FED. AID PROJECT							