

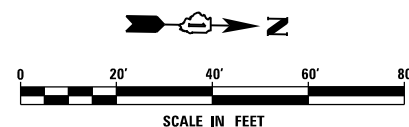
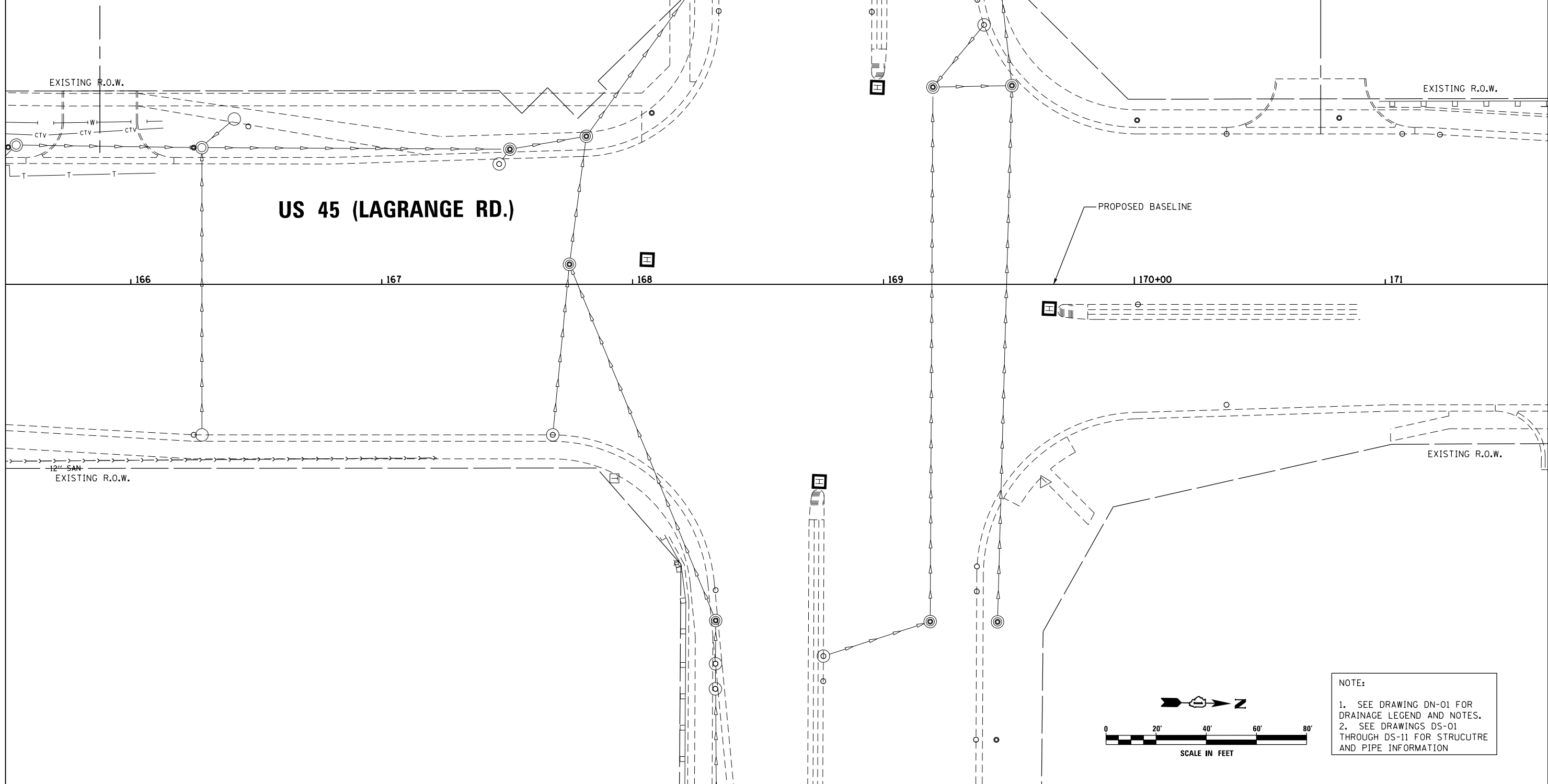
STORM SEWER AND STRUCTURE REMOVAL

NONE

159TH STREET

US 45 (LAGRANGE RD.)

SEE SHEET DU-24
MATCH LINE STA. 165+50.00



NOTE:
1. SEE DRAWING DN-01 FOR DRAINAGE LEGEND AND NOTES.
2. SEE DRAWINGS DS-01 THROUGH DS-11 FOR STRUCTURE AND PIPE INFORMATION

URS
100 S. WACKER DR.
SUITE 600
CHICAGO, IL 60606
TEL (312) 939-1000
FAX (312) 939-4998

FILE NAME = D160F05-KEA-SHT-DRAINEX25.dgn	USER NAME = Frank.Stallone	DESIGNED - MGS	REVISED -
SHT.PLAN	PLOT SCALE = 40.00' / in.	DRAWN - REW	REVISED -
	PLOT DATE = 3/14/2013	CHECKED - JRS	REVISED -
		DATE - 03/13/13	REVISED -

**STATE OF ILLINOIS
DEPARTMENT OF TRANSPORTATION**

EXISTING DRAINAGE PLAN - US 45 (LAGRANGE ROAD)

SCALE: 1"=20' SHEET 25 OF 35 SHEETS STA. 165+50.00 TO STA. END

F.A.P. RTE.	SECTION	COUNTY	TOTAL SHEETS	SHEET NO.
330	103R-3	COOK	932	281
DU-25			CONTRACT NO. 60F05	
ILLINOIS FED. AID PROJECT				