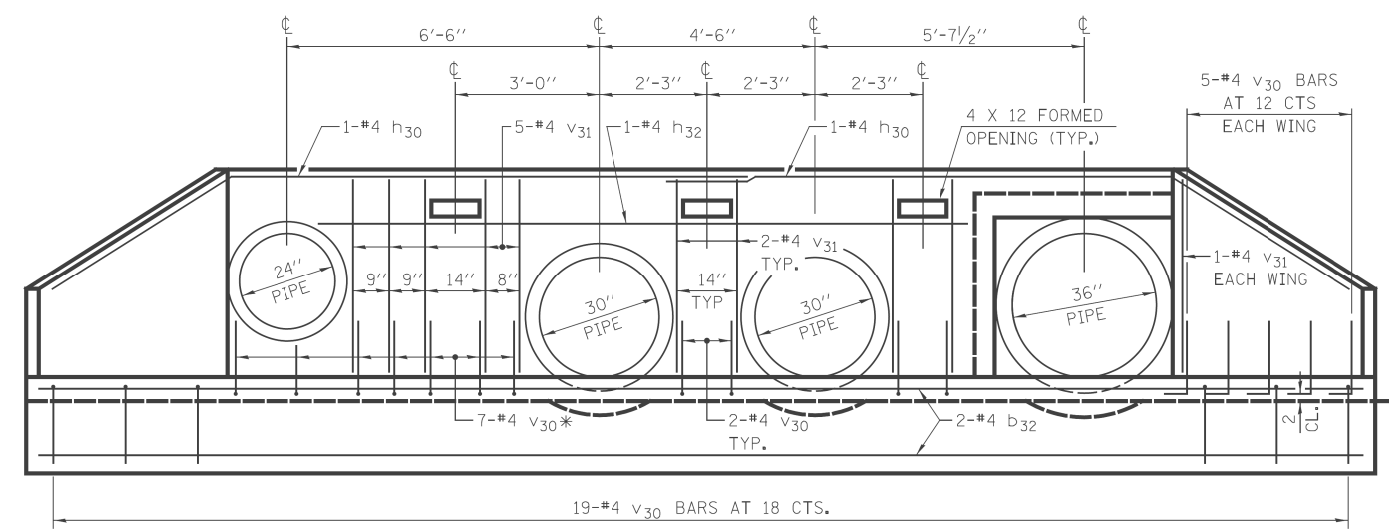
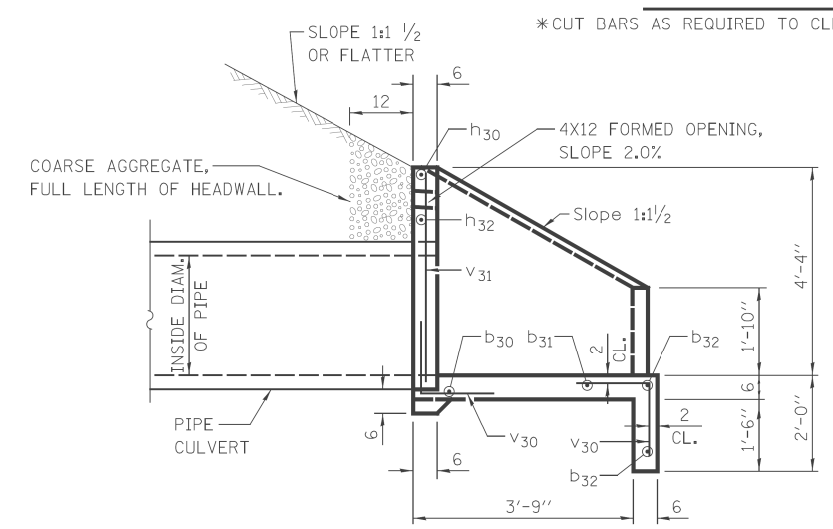


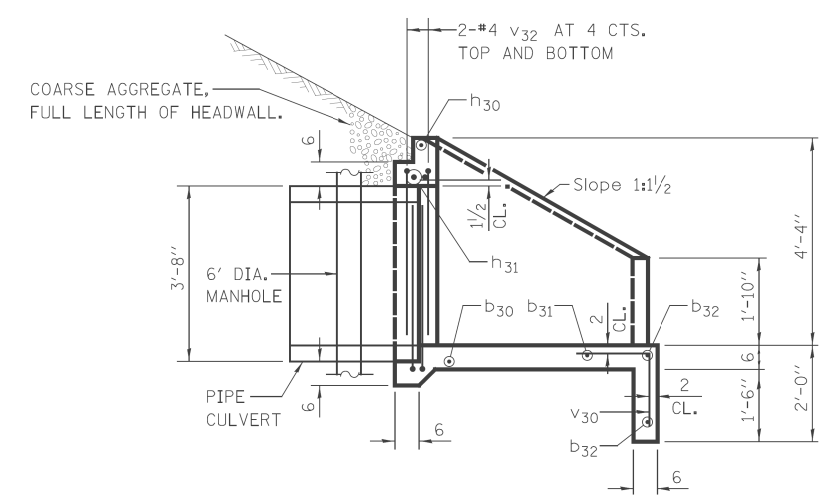
PLAN



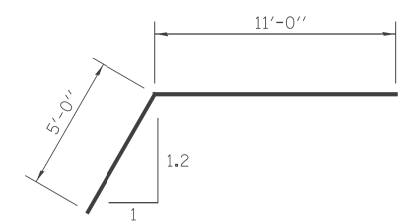
END ELEVATION



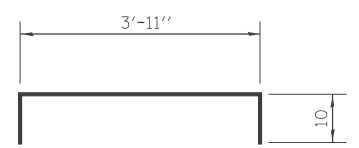
SECTION A-A



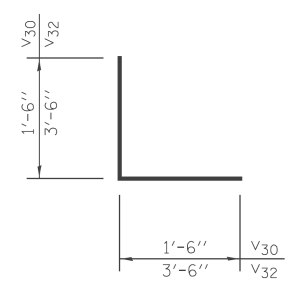
SECTION B-B



BAR h₃₀
BEND IN FIELD



BAR h₃₁
BEND IN FIELD



BARS v₃₀ & v₃₂

BILL OF MATERIALS

BAR	NO.	SIZE	LENGTH	SHAPE
b ₃₀	1	#4	21'-3"	—
b ₃₁	1	#4	24'-6"	—
b ₃₂	2	#4	27'-0"	—
h ₃₀	2	#4	16'-0"	└┐
h ₃₁	2	#5	5'-7"	└┐
h ₃₂	1	#4	11'-0"	—
v ₃₀	40	#4	3'-0"	└┐
v ₃₁	11	#4	4'-0"	—
v ₃₂	4	#4	7'-0"	└┐
REINFORCEMENT BARS			POUND	240
CONCRETE STRUCTURES			CU YD	4.9

GENERAL NOTES

SEE SHEET DU-49 FOR PIPE AND END SECTION INVERT ELEVATIONS.

BUILD TOPS OF HEADWALLS PARALLEL TO GRADE LINE.

ALL SLOPE RATIOS ARE EXPRESSED AS UNITS OF VERTICAL DISPLACEMENT TO UNITS OF HORIZONTAL DISPLACEMENT (V:H).

ALL DIMENSIONS ARE IN INCHES UNLESS OTHERWISE SHOWN.

DESIGNED - TB	REVISED -
DRAWN - TB	REVISED -
CHECKED - JRS	REVISED -
DATE - 03/13/13	REVISED -

**STATE OF ILLINOIS
DEPARTMENT OF TRANSPORTATION**

**REINFORCED CONCRETE END SECTION
STA. 105 + 16**

SCALE: NTS SHEET NO. 3 OF 5 SHEETS STA. TO STA.

F.A. RTE.	SECTION	COUNTY	TOTAL SHEETS	SHEET NO.
330	103R-3	COOK	932	350
DD-03		CONTRACT NO. 60F05		
ILLINOIS FED. AID PROJECT				