

PT OF SEC 21, 22, 27 & 28, T36N, R12E OF THE 3RD PM, COOK CO. IL

PARCEL No.	OWNER	TOTAL HOLDINGS (ACRES)	PART TAKEN (ACRES)	PREVIOUSLY DEDICATED (ACRES)	REMAINDER (ACRES)	EASEMENT AREA (ACRES)	PERMANENT INDEX NUMBER	PURPOSE OF EASEMENT	ACQUIRED BY
OH40011	SSM HEALTH CARE	60.009	2.398	0.000	57.611	0.000	27-27-100-015	N/A	
OH40012	JACK DEVELOPMENT, LLC	3.335	0.169	0.000	3.166	0.000	27-27-100-022	TEMPORARY	
OH40012E-A		N/A	N/A	N/A	N/A	0.032		TEMPORARY	
OH40012E-B		N/A	N/A	N/A	N/A	0.013		TEMPORARY	
OH40013	RDV VENTURES, LLC	0.916	0.154	0.000	0.762	0.000	27-27-100-017	TEMPORARY	
OH40013E-A		N/A	N/A	N/A	N/A	0.098		TEMPORARY	
OH40013E-B		N/A	N/A	N/A	N/A	0.030		TEMPORARY	
OH40014	ADVOCATE HEALTH AND HOSPITALS CORPORATION	16.217	0.519	0.000	15.698	0.000	27-22-300-024	TEMPORARY	
OH40014E-A		N/A	N/A	N/A	N/A	0.516		TEMPORARY	
OH40141	K2 DEVELOPMENT, LLC	1.230	0.010	0.000	1.220	0.008	27-21-403-010	TEMPORARY	
OH40142E	K2 DEVELOPMENT LLC II	0.746	N/A	N/A	N/A	0.036	27-21-403-008	TEMPORARY	
OH40143	FIRST NATIONAL BANK OF ILLINOIS AS TRUSTEE UNDER TRUST NO. 3761	3.092	215.32 FT. 0.005 AC.	0.000	3.087	0.000	27-21-403-009	N/A	
OH40143E-A		N/A	N/A	N/A	N/A	0.026		TEMPORARY	
OH40143E-B		N/A	N/A	N/A	N/A	0.063		TEMPORARY	

** SEE SHEET 30 FOR DETAIL OF OH40012E-B

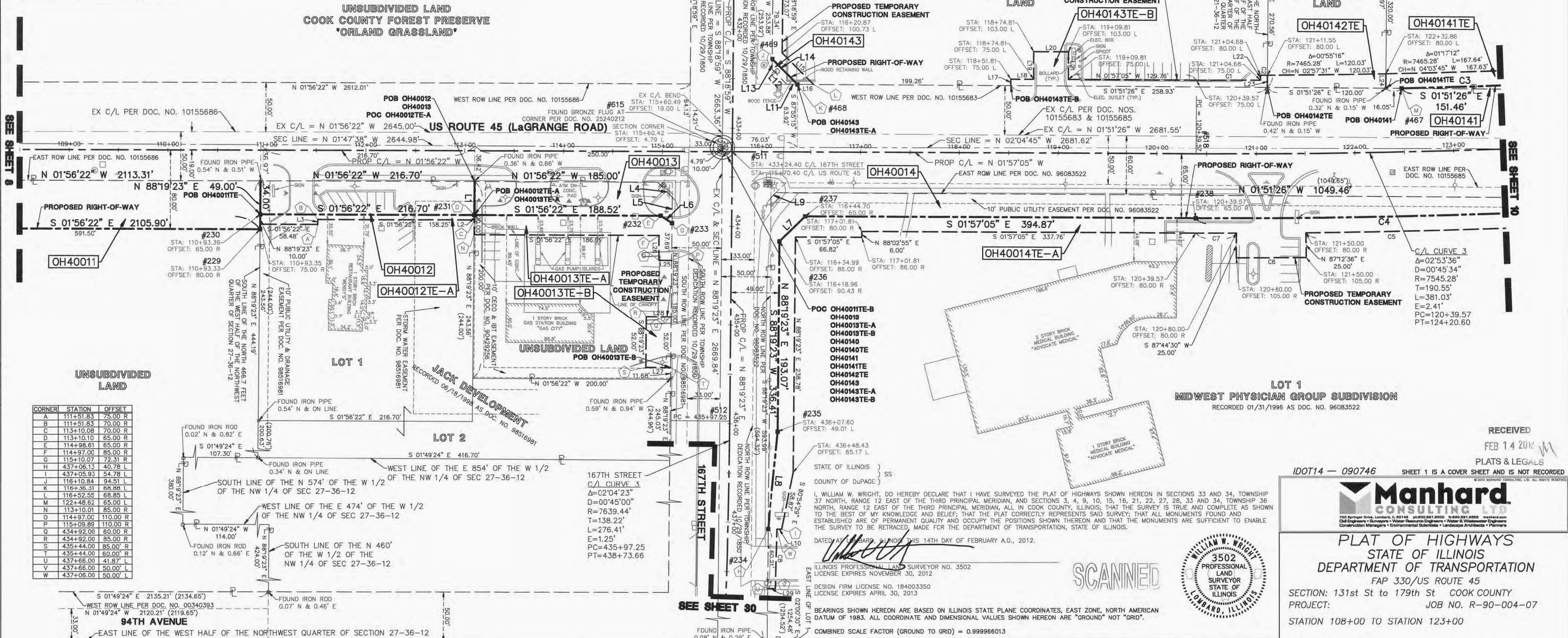
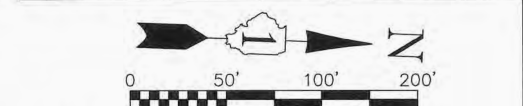
LINE	BEARING	LENGTH	LINE	BEARING	LENGTH
L1	N 88°19'23" E	34.00'	L16	S 01°51'26" E	16.24'
L2	N 88°19'23" E	5.00'	L17	S 88°02'55" W	6.48'
L3	N 88°03'38" E	5.00'	L18	N 01°57'05" W	23.00'
L4	N 43°13'47" E	21.16' (21.20')	L19	S 88°02'55" W	28.00'
L5	N 88°19'23" E	26.31'	L20	N 01°57'05" W	35.00'
L6	S 30°37'47" W	13.59'	L21	N 88°02'55" E	28.00'
L7	S 46°36'24" E	36.18'	L22	S 87°33'15" W	5.00'
L8	S 86°29'05" E	99.45'	L23	N 88°14'22" E	12.25'
L9	N 46°46'01" W	7.08' (6.47')	L24	N 88°14'22" E	14.55'
L10	S 01°40'37" E	4.78'	L25	S 01°56'22" E	12.89'
L11	S 01°51'26" E	10.59'	L26	S 88°03'38" W	25.00'
L12	S 43°13'47" W	21.18' (21.21')	L27	S 01°40'37" E	25.00'
L13	S 88°19'23" E	10.59'	L28	N 01°49'24" W	25.00'
L14	N 43°13'47" E	36.14'	L29	S 00°24'40" E	8.13'
L15	N 43°13'47" E	44.95'			

CURVE	RADIUS	LENGTH	CHORD BEARING	CHORD	DELTA
C1	7470.28'	64.46'	N 02°11'55" W	64.46'	0°29'40"
C2	7465.28'	6.79'	N 02°28'19" W	6.79'	0°03'08"
C3	7480.28'	151.59'	N 04°07'10" W	151.58'	1°09'40"
C4	7610.28'	384.31'	S 03°23'53" E	384.27'	2°53'36"
C5	7625.28'	273.47'	S 03°49'02" E	273.45'	2°03'17"
C6	7650.28'	70.98'	S 02°31'27" E	70.97'	0°31'54"
C7	7625.28'	40.86'	S 02°06'18" E	40.86'	0°18'25"
C8	7689.44'	60.40'	N 89°21'49" E	60.39'	0°27'00"

LEGEND

- EX. GUARD RAIL
- PK MAIL SET
- REPLACED AFTER CONSTRUCTION
- IRON ROD SET
- IRON PIPE OR ROD FOUND
- CUT STAKES FOUND OR SET
- THESE CROSS REFERENCE FOUND OR SET MONUMENTATION WITNESS POINTS SET TO AID IN THE RECOVERY AND ESTABLISHMENT OF THE PROPOSED CENTERLINE OF CONSTRUCTION.
- STAKING OF PROPOSED RIGHT OF WAY. MARKER TO MONUMENT THE POSITION SHOWN, IDENTIFIED BY INSCRIPTION DATA AND SURVEYORS REGISTRATION NUMBER.
- POINT OF BEGINNING
- POINT OF COMMENCEMENT
- EX. MISCELLANEOUS MANHOLE (MH)
- EX. STORM MANHOLE (MH)
- EX. STORM CATCH BASIN (CB)
- EX. STORM INLET (NL)
- EX. FLARED END SECTION (FES)
- EX. SANITARY MANHOLE (SMH)
- EX. FIRE HYDRANT/AUX. VALVE
- EX. VALVE BOX
- EX. VALVE VAULT (V.V.)
- EX. IRRIGATION CONTROL BOX
- EX. ELECTRICAL METER
- EX. ELECTRICAL OUTLET
- EX. UTILITY POLE
- EX. UTILITY POLE WITH LIGHT
- EX. GUY WIRE
- EX. LIGHT STANDARD
- EX. STREET LIGHT
- EX. GROUND LIGHT
- EX. SIGN
- EX. DOUBLE POLE SIGN
- EX. MAILBOX
- EX. BOLLARD
- EX. FLAG POLE

F.A.P. ROUTE	SECTION	COUNTY	TOTAL SHEETS	SHEET NO.
330/US 45	131st St to 179th St	COOK	932	403



CORNER	STATION	OFFSET
A	111+51.83	75.00 R
B	111+51.83	70.00 R
C	113+10.08	70.00 R
D	113+10.10	65.00 R
E	114+98.61	65.00 R
F	114+97.00	85.00 R
G	115+10.07	72.31 R
H	437+06.13	40.78 L
I	437+05.93	54.78 L
J	116+10.84	94.51 L
K	116+39.31	69.88 L
L	116+52.55	68.85 L
M	122+48.62	65.00 L
N	113+10.01	85.00 R
O	114+97.00	110.00 R
P	115+09.69	110.00 R
Q	434+92.00	80.00 R
R	434+92.00	85.00 R
S	435+44.00	85.00 R
T	435+44.00	60.00 R
U	437+66.00	41.87 L
V	437+66.00	50.00 L
W	437+08.00	50.00 L

SEE SHEET 52 FOR COORDINATE VALUES FOR CENTERLINE POINTS, SECTION CORNERS AND ROW MONUMENTS

REVISION DATE	DESCRIPTION	INITIALS
02/14/12	REVISED PER IDOT REVIEW	WWW
10/17/11	ISSUED FINAL SURVEY TO IDOT	BJP
08/15/11	DELETED PARCEL OH40145E-F	WWW
08/02/11	NEW OWNER - PARCEL OH40013	BJP
07/27/11	ADDED POINT NUMBERS FOR COORDINATE TABLE	WWW
		INITIALS



RECEIVED
FEB 14 2012

PLATS & LEGALS
SHEETS IS A COVER SHEET AND IS NOT RECORDED

DOT14 - 090746

Manhard CONSULTING LTD
3502 PROFESSIONAL LAND SURVEYOR STATE OF ILLINOIS

PLAT OF HIGHWAYS
STATE OF ILLINOIS
DEPARTMENT OF TRANSPORTATION
FAP 330/US ROUTE 45
SECTION: 131st St to 179th St COOK COUNTY
PROJECT: JOB NO. R-90-004-07
STATION 108+00 TO STATION 123+00

SCALE: 1" = 50' SHEET 9 OF 55

BUREAU OF LAND ACQUISITION
201 WEST CENTER COURT
SCHAUMBURG, ILLINOIS 60196

RECORDING: RECORDED ON AS DOCUMENT NO.