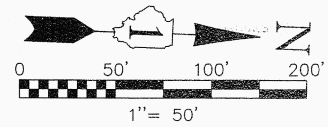


PT OF NE1/4 SEC 21 & PT OF NW 1/4 SEC 22, T36N, R12E OF THE 3RD PM, COOK CO. IL

PARCEL No.	OWNER	TOTAL HOLDINGS (ACRES)	PART TAKEN (ACRES)	PREVIOUSLY DEDICATED (ACRES)	REMAINDER (ACRES)	EASEMENT AREA (ACRES)	PERMANENT INDEX NUMBER	PURPOSE OF EASEMENT	ACQUIRED BY
OH40147TE-A	INTER-CONTINENTAL REAL ESTATE AND DEVELOPMENT CORPORATION	15.744	N/A	N/A	N/A	0.068	27-22-103-029	TEMPORARY	
OH40147TE-B						0.048	27-22-103-028	TEMPORARY	
OH40148TE	LA-Z RECLINER SHOP, INC.	1.328	N/A	N/A	N/A	0.037	27-22-100-027	TEMPORARY	

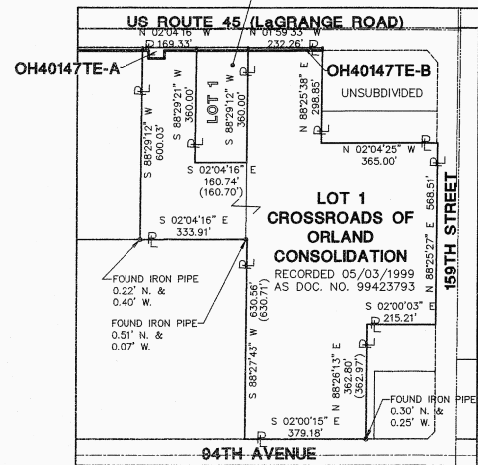


F.A.P. ROUTE	SECTION	COUNTY	TOTAL SHEETS	SHEET NO.
330/US 45	131st St to 179th St	COOK	932	406A

STATION 160+50 TO STATION 169+00

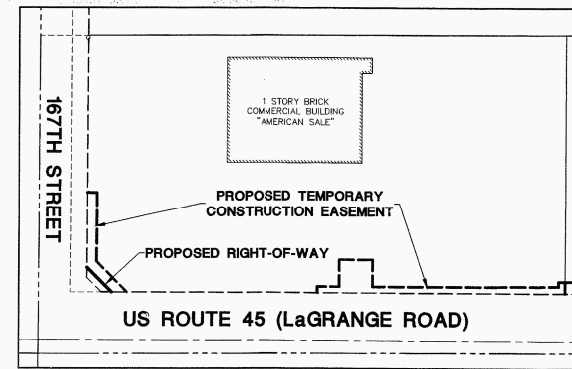
FED. ROAD DIST. NO. 1	ILLINOIS	FED. AID PROJECT

LA-Z-BOY SUBDIVISION
NUMBER TWO
RECORDED 05/03/1999
AS DOC. NO. 99423792

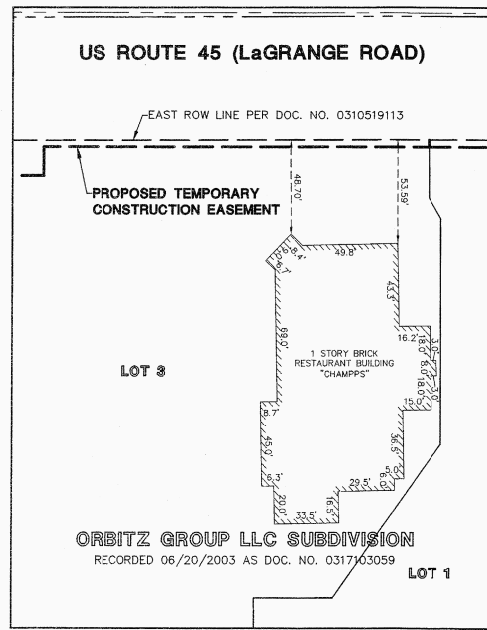
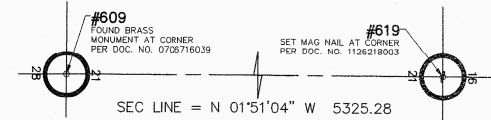


PARCEL OH40147TE-A & OH40147TE-B
TOTAL HOLDINGS DETAIL
SCALE: 1" = 300'

SEE SHEET 52 FOR COORDINATE VALUES FOR CENTERLINE POINTS, SECTIONS CORNERS AND ROW MONUMENTS

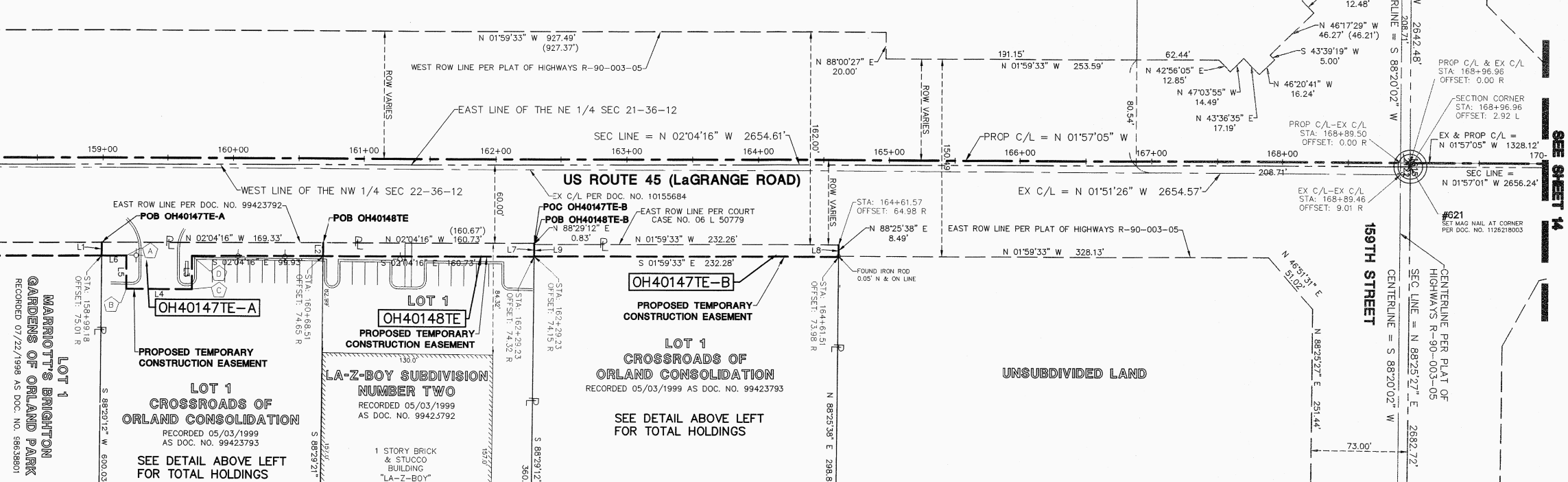


PARCEL OH40143 BUILDING DETAIL
SCALE: 1" = 100'



PARCEL OH4002TE BUILDING DETAIL
SCALE: 1" = 50'

SEE SHEET 52



CORNER	STATION	OFFSET
A	159+18.58	74.96 R
B	159+18.63	99.96 R
C	159+68.63	99.86 R
D	159+68.58	74.86 R

LINE	BEARING	LENGTH
L1	S 88°29'12" W	10.00'
L2	N 88°29'21" E	10.00'
L3	N 87°55'44" E	25.00'
L4	S 02°04'16" E	50.00'
L5	S 87°55'44" W	25.00'
L6	S 02°04'16" E	19.40'
L7	N 88°29'12" E	10.00'
L8	N 88°25'38" E	9.00'
L9	S 88°29'12" W	9.00'

STATE OF ILLINOIS)
COUNTY OF DuPAGE) SS

I, WILLIAM W. WRIGHT, DO HEREBY DECLARE THAT I HAVE SURVEYED THE PLAT OF HIGHWAYS SHOWN HEREON IN SECTIONS 33 AND 34, TOWNSHIP 37 NORTH, RANGE 12 EAST OF THE THIRD PRINCIPAL MERIDIAN, AND SECTIONS 3, 4, 9, 10, 15, 16, 21, 22, 27, 28, 33 AND 34, TOWNSHIP 36 NORTH, RANGE 12 EAST OF THE THIRD PRINCIPAL MERIDIAN, ALL IN COOK COUNTY, ILLINOIS; THAT THE SURVEY IS TRUE AND COMPLETE AS SHOWN TO THE BEST OF MY KNOWLEDGE AND BELIEF; THAT THE PLAT CORRECTLY REPRESENTS SAID SURVEY; THAT ALL MONUMENTS FOUND AND ESTABLISHED ARE OF PERMANENT QUALITY AND OCCUPY THE POSITIONS SHOWN THEREON AND THAT THE MONUMENTS ARE SUFFICIENT TO ENABLE THE SURVEY TO BE RETRACED, MADE FOR THE DEPARTMENT OF TRANSPORTATION, STATE OF ILLINOIS.

DATED AT LOMBARD, ILLINOIS THIS 12TH DAY OF OCTOBER A.D., 2011.

WILLIAM W. WRIGHT
ILLINOIS PROFESSIONAL LAND SURVEYOR NO. 3502
LICENSE EXPIRES NOVEMBER 30, 2012

DESIGN FIRM LICENSE NO. 184003350
LICENSE EXPIRES APRIL 30, 2013

BEARINGS SHOWN HEREON ARE BASED ON ILLINOIS STATE PLANE COORDINATES, EAST ZONE, NORTH AMERICAN DATUM OF 1983. ALL COORDINATE AND DIMENSIONAL VALUES SHOWN HEREON ARE "GROUND" NOT "GRID".

COMBINED SCALE FACTOR (GROUND TO GRID) = 0.999966013

REVISION DATE	DESCRIPTION	INITIALS
10/17/11	ISSUED FINAL SURVEY TO IDOT	BJP
07/27/11	ADDED POINT NUMBERS FOR COORDINATE TABLE	WWW
11/10/10	REVISED PER IDOT REVIEW	SJP
10/08/10	ADDED PARCELS OH40147TE-A, OH40147TE-B & OH40148TE	SJP
09/17/10	PER IDOT REVIEW	BJP



IDOT14 - 090746 SHEET 1 IS A COVER SHEET AND IS NOT RECORDED



PLAT OF HIGHWAYS
STATE OF ILLINOIS
DEPARTMENT OF TRANSPORTATION
FAP 330/US ROUTE 45
SECTION: 131st St to 179th St COOK COUNTY
PROJECT: JOB NO. R-90-004-07
STATION 160+50 TO STATION 169+00

SCALE: 1" = 50' SHEET 13 OF 55

BUREAU OF LAND ACQUISITION
201 WEST CENTER COURT
SCHAUMBURG, ILLINOIS 60196

RECEIVED
OCT 24 2011
PLATS & LEGALS

RECORDING RECORDED ON

AS DOCUMENT NO

DATE	BY	MADE	CHECKED	INKED

R.O.W. PLAT	NOTEBOOK NO.

October 6, 2011 - 10:54
Dwg Name: P:\dot14\14.dwg
Dwg Path: P:\dot14\14.dwg
Drawings Path: P:\dot14\14.dwg
Updated By: bwright