



TRANSVERSE CONTRACTION JOINTS
15' SPACING (TYPICAL)
REFER TO STANDARD 420106-04

LEGEND:
[Hatched Box] DETECTABLE WARNINGS

NOTES:
1. ELEVATIONS ARE FOR INFORMATION ONLY. CONTRACTOR SHALL VERIFY ALL ELEVATIONS PRIOR TO CONSTRUCTION.
2. REFER TO STANDARDS 420001, 420101 AND 420106 FOR JOINT DETAILS AND SPACING.
3. FOR CURB RAMP FOR SIDEWALKS REFER TO STANDARDS 424001, 424006, 424011, 424016, 424021, 424026, 424031 AND/OR AS DIRECTED BY THE ENGINEER.

TRANSVERSE CONTRACTION JOINTS
15' SPACING (TYPICAL)
REFER TO STANDARD 420106-04

TRANSVERSE CONTRACTION JOINTS
15' SPACING (TYPICAL)
REFER TO STANDARD 420106-04

2.0% 2.5% 12.0' 12.0' 12.0'

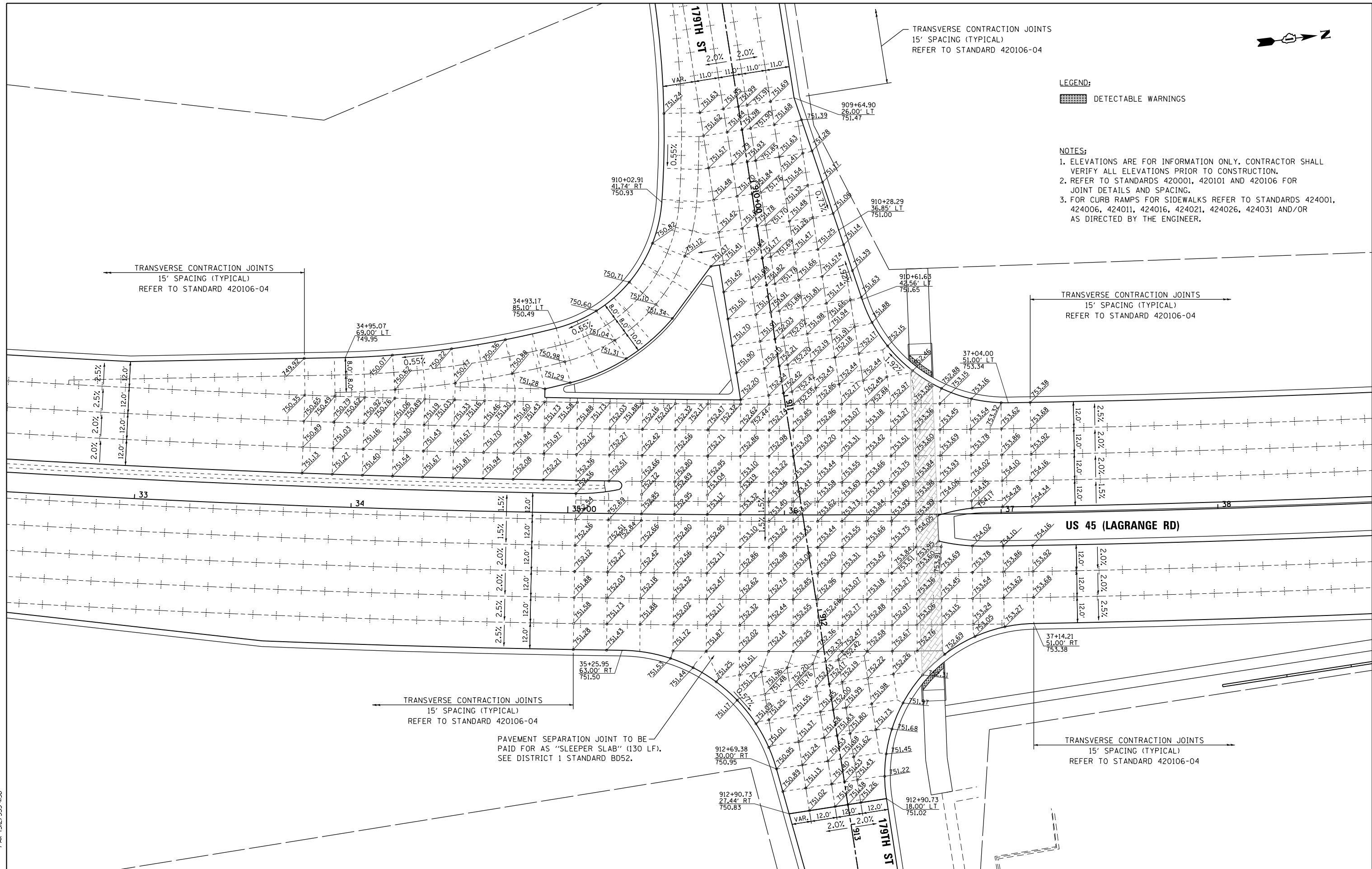
2.5% 2.0% 2.0% 1.5% 12.0' 12.0' 12.0' 12.0'

2.0% 2.0% 2.5% 12.0' 12.0' 12.0'

TRANSVERSE CONTRACTION JOINTS
15' SPACING (TYPICAL)
REFER TO STANDARD 420106-04

TRANSVERSE CONTRACTION JOINTS
15' SPACING (TYPICAL)
REFER TO STANDARD 420106-04

PAVEMENT SEPARATION JOINT TO BE PAID FOR AS "SLEEPER SLAB" (130 LF).
SEE DISTRICT 1 STANDARD BD52.



100 S. WACKER DR.
100 S. WACKER DR.
CHICAGO, IL 60606
TEL (312) 939-1000
FAX (312) 939-4998



FILE NAME = D160F05-SHT-PAVEMENT-DETAILS01.dgn
SHT.PLAN

USER NAME = Frank.Stallone
PLOT SCALE = 48.0001" / in.
PLOT DATE = 3/13/2013

DESIGNED - JTF
DRAWN - JTF
CHECKED - MJT
DATE - 03/13/13

REVISED -
REVISED -
REVISED -
REVISED -

STATE OF ILLINOIS
DEPARTMENT OF TRANSPORTATION

INTERSECTION DETAILS
US 55 (LAGRANGE ROAD) AND 179TH STREET

SCALE: 1"=20' SHEET 1 OF 8 SHEETS STA. TO STA.

F.A.P. RTE.	SECTION	COUNTY	TOTAL SHEETS	SHEET NO.
330	103R-3	COOK	932	407
PD-01		CONTRACT NO. 60F05		
ILLINOIS FED. AID PROJECT				